

2025-26

STUDENT HANDBOOK AND PLANNER



SPC St. Petersburg
College

TITAN HUB

Titan Hub (Pathify) can help enhance your college experience at SPC. Install this app on your phone or visit Titan Hub online and unlock resources that can help you on your academic journey and connect you with your campus and the collegewide community.



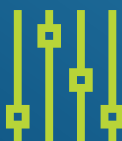
Get easy, one-stop access to email, MySPC, MyCourses, your digital student ID*, and more



Connect with groups and organizations around SPC



Receive announcements and event information



Customize shortcuts and other settings to fit your needs

* If you are an SPC student who has an existing physical ID, you can also access your digital ID on Titan Hub. Check the college's website at spcollege.edu/student-ID for more information.



DOWNLOAD THE APP TODAY

or visit titanhub.spcollege.edu



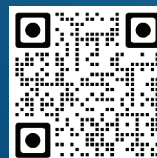
Download on the
App Store

stpe.co/TitanHubApple



GET IT ON
Google Play

stpe.co/TitanHubGoogle



Email titanhub@spcollege.edu if you have questions about Titan Hub.

St. Petersburg College is committed to equal access/equal opportunity in its programs, activities, and employment. For additional information visit www.spcollege.edu/eaao.

St. Petersburg College

SPC**This handbook belongs to:** _____

Phone _____

Email _____

A MESSAGE FROM THE PRESIDENT

Welcome to St. Petersburg College, Home of the Titans!

At SPC, we offer students the ability to do what matters to them, with opportunities to learn in class and through real-world experiences, online, and face-to-face at our campuses. Education is not just about earning your credentials. It's about the moments that inspire you to lead, to create and to make a difference. Your career is important, and you will be best prepared for it because of the experience you gain at SPC. We prepare you for what comes next.

Congratulations on investing in YOU and taking the next step in your educational journey.



Dr. Tonjua Williams, President
St. Petersburg College

This Student Handbook is intended to enhance your college experience by providing a variety of information and resources available to help you succeed. We make it easy for you to keep up with important information by posting events, college closings, website alerts, and deadlines both around campus and online.

Make sure to:

- **Get TITAN CONNECT**– Download the SPC event and resource app by searching for Modern Campus Presence on your mobile device, or visit titanconnect.spcollege.edu
- **Bookmark** the most up-to-date Academic Calendar at spcollege.edu/academic-calendar

While this handbook contains many of SPC's policies, for a complete listing of the SPC Board of Trustees Rules and College Procedures, visit spcollege.edu/BOTRules.

SPC President Welcome message	1	Learning Resources	19
Mission and Vision Statement	3	Library	19-20
Why Choose SPC?	3	Lost and Found	20
Degree and Training Information	4-5	Registration - <i>See Advising</i>	20
Academic Calendar*	7-9	Security	20
Campus Locations and Leadership	10-11	Student Life and Leadership	20
Contact Info - Career & Academic Communities		Student Lounges.....	20-21
Arts, Humanities, and Design	12	Student Photo ID	21
Business	12	Student Support Resources	21
Communications	12	Technical Support	21
Education	12	Testing	21
Engineering, Manufacturing, and		Titan Connect - <i>Event App</i>	22
Building Arts.....	12	Transcripts - <i>See Admissions and Records</i>	22
Health Sciences, Nursing and Veterinary		University Partnership Center	22
Technology	12-13	Veterans Services	22
Public Safety, Public Policy, Ethics,		We're on the Way	22
and Legal Studies.....	13	Workforce Education	22
Science and Mathematics	13		
Social and Behavioral Sciences and		Campus Maps	
Human Services.....	13	Allstate Center.....	23
Technology.....	13	Caruth Health Education Center	24
Contact Info - College Administration		Clearwater Campus	25
Accessibility Services.....	14	Downtown Center	26
Admissions and Records.....	15	EpiCenter	27
Advising - <i>Career and Academic Advising</i>	15	Midtown Center	28-29
Athletics.....	15	Seminole Campus	30
Bookstore - Barnes & Noble	15-16	St. Petersburg/Gibbs Campus.....	31
Business Office	16	Tarpon Springs Campus.....	32
Career Development Services	16	Important Student Information	
Emergency Management.....	16-17	Academics	34-37
Financial Aid	17	Academic Policy	37-39
Food Services.....	17	Registration	39-40
High School Programs	17-18	Student Life/Services.....	40-44
Honors Programs	18	Financial Aid	45-47
International Programs	18	Student Right-to-Know	48-53
		Student Planner	55

*Calendar subject to change. For an updated calendar, visit spcollege.edu/academic-calendar.

The Board of Trustees of St. Petersburg College affirms its equal opportunity policy in accordance with the provisions of the Florida Educational Equity Act and all other relevant state and federal laws, rules and regulations. The College will not discriminate on the basis of race, color, ethnicity, religion, sex, age, national origin, marital status, pregnancy, sexual orientation, gender identity, genetic information, or against any qualified individual with disabilities in its employment practices or in the admission and treatment of students. Recognizing that sexual harassment constitutes discrimination on the basis of sex and violates this Rule, the College will not tolerate such conduct. Should you experience such behavior, please contact Dr. JoCynda Hudson, Title IX Coordinator/EEO Officer at 727-341-3261; by mail at P.O. Box 13489, St. Petersburg, FL 33733-3489; or by email at eao_director@spcollege.edu. To view the Equity report, visit spcollege.edu/eao and click on "Equity Report."

MISSION STATEMENT

*Empower our students and community
to achieve success and economic mobility through
academic excellence and engagement*



At SPC, you'll learn from faculty who are experts in their fields and hold impressive academic credentials. From published authors to talented award winners, our faculty members use hands-on learning, innovative teaching and leading-edge technology to give you the best educational experience.

YOUR SUCCESS MATTERS

From day one, you will get the individual attention you need from caring, professional faculty and staff who believe in you.

WHY SPC

PERSONALIZED SUPPORT



LOW TUITION



FLEXIBLE SCHEDULING



ACCREDITATION



CAREER COUNSELING

ACCREDITATION

St. Petersburg College is accredited by the Southern Association of Colleges and Schools Commission on Colleges (SACSCOC) to award Bachelor of Science degrees, Bachelor of Applied Science Degrees, Associate in Arts degrees, and Associate in Science degrees. St. Petersburg College also may offer credentials such as certificates and diplomas at approved degree levels. Questions about the accreditation of St. Petersburg College may be directed in writing to the Southern Association of Colleges and Schools Commission on Colleges at 1866 Southern Lane, Decatur, GA 30033-4097, by calling (404) 679-4500, or by using information available on SACSCOC's website (www.sacscoc.org).

**ABOUT OUR INSTRUCTORS**

Of the 1,047 instructional employees, 356 hold doctoral degrees, while 493 have master's degrees and 137 have a master's plus 30 additional credit hours in their discipline.

SCHOOL MASCOT: TITANS

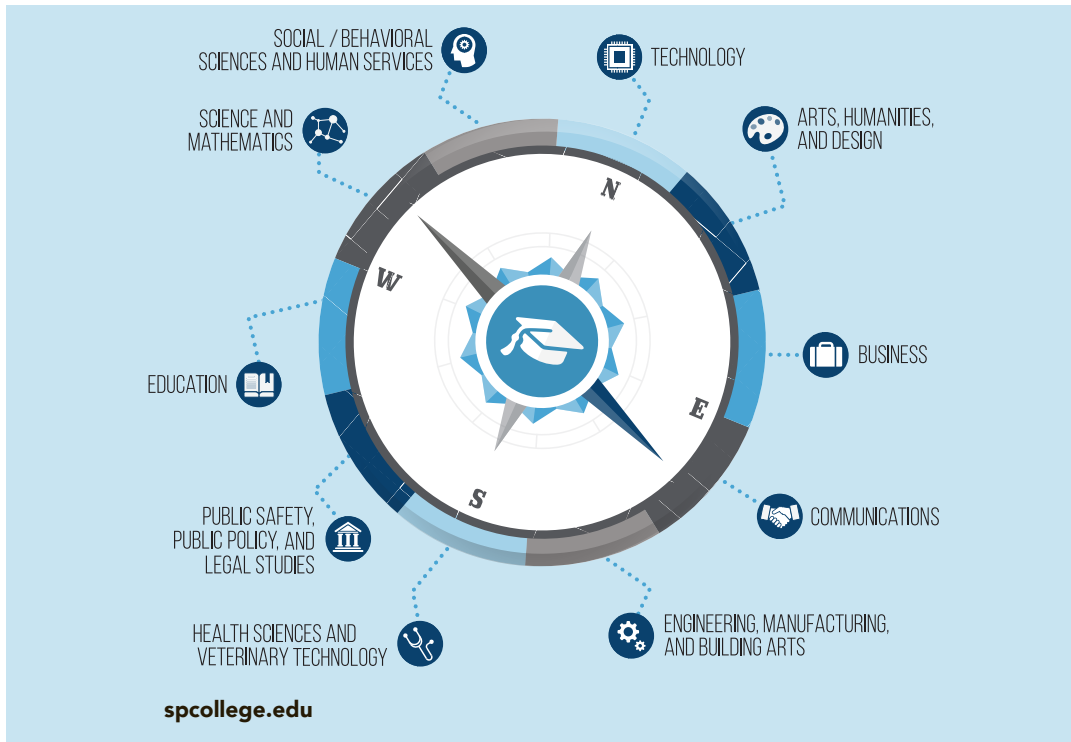
In Greek mythology, the Titans were a family of giants who ruled the Earth. Today, the term Titan represents one who is gigantic in size or power or who stands out for greatness of achievement.

SCHOOL COLORS AND MOTTO

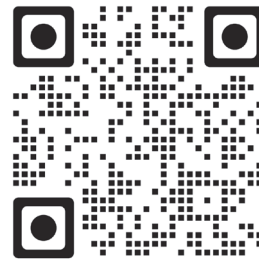
SPC's colors are blue and white, representing the qualities of truth and light. The college's motto, "Lux et Veritas" is Latin for (you guessed it) light and truth.

CAREER + ACADEMIC COMMUNITIES

spcollege.edu/degrees-training



With more than 200 degree, certificate, and transfer programs to choose from, you'll find the perfect path at SPC to an undergraduate degree or a rewarding career, including many that are high paying and in demand. Our programs fall into 10 Career and Academic communities. Each program has a Guided Pathway or road map for how to complete your degree so you can get into your career quickly. Our bachelor's degrees can help you move up in your career and cost half that of state universities in Florida.



spcollege.edu/degrees-training



DEGREE AND TRAINING PROGRAMS

spcollege.edu/degrees-training

Certificate (CT) Programs and Continuing Education

Are you looking to get into the workforce quickly, or update your current skills? Check out our certificate programs, many of which take less than a year to complete and give you the skills to excel in your chosen career. Certificate programs are available through either the college's academic communities or our Workforce, Community and Corporate Partnerships division, which also provides other short-term training. Find an up-to-date listing of certificates and short-term training programs at spcollege.edu/workforce.

For certificate programs offered within the college's Career & Academic Communities, visit spcollege.edu/certificates.



Associate in Science (A.S.) Degrees

Our Associate in Science degrees are designed to get you into the workforce with a two-year program and are offered in a variety of Career and Academic Communities. A.S. degrees can also be built upon with a B.A.S. degree.



Associate in Arts (A.A.) Degrees

SPC offers an Associate of Arts (A.A.) degree, which can be completed fully online, to pave your way to any number of bachelor's degree programs. A.A. degrees are designed to prepare students planning to obtain a bachelor's degree.



Bachelor's Degrees (B.S., B.A.S.)

SPC offers a variety of bachelor's degree programs, many fully online. A bachelor's degree is the general term for a four-year degree, and generally requires 120 hours of both general education and degree-specific classes.



Bachelor's Degree Transfer Programs

Are you planning to pursue a bachelor's degree at a specific state university? Begin by earning your A.A. degree at SPC. Take advantage of various programs designed to help you achieve your academic goals! Florida's 2+2 program guarantees your admission to one of the state's 12 public universities, or you can explore our partnership transfer programs. We are here to support you every step of the way.

Visit <https://www.spcollege.edu/future-students/degree-options/associate-in-arts-degrees-and-transfer-plans/guaranteed-transfer-programs> to learn more.



University Partnership Center (UPC)

The UPC offers a variety of degrees not offered by SPC from several fully-accredited colleges and universities, which allows Pinellas County residents to further their education without having to leave the area. Visit spcollege.edu/upc for more information.

NOTES

NOTES

TASKS

<input type="checkbox"/>	
<input type="checkbox"/>	
<input type="checkbox"/>	
<input type="checkbox"/>	
<input type="checkbox"/>	
<input type="checkbox"/>	
<input type="checkbox"/>	
<input type="checkbox"/>	
<input type="checkbox"/>	
<input type="checkbox"/>	
<input type="checkbox"/>	
<input type="checkbox"/>	
<input type="checkbox"/>	
<input type="checkbox"/>	
<input type="checkbox"/>	

DON'T FORGET!

SPC St. Petersburg
College

SPC ACADEMIC CALENDAR

FALL 2025

Calendar subject to change. For an updated calendar of academic events, visit spcollege.edu/calendar .	FALL FULL TERM	1ST 8-WEEK SESSION	WEEKEND COLLEGE	12-WEEK EXPRESS SESSION	2ND 8-WEEK SESSION
TERM/SESSION DATES					
First day of term/session	Aug. 18, 2025	Aug. 18, 2025	Aug. 22, 2025	Sept. 15, 2025	Oct. 13, 2025
Last day of term/session	Dec. 12, 2025	Oct. 10, 2025	Dec. 7, 2025	Dec. 12, 2025	Dec. 12, 2025
ADMISSIONS					
Application deadline for non-health programs, including Bachelor's programs	Admission to programs are aligned to students' first term (or session) at SPC and do not observe specific deadlines.				
Health programs admissions deadlines	Dates vary by program. Visit spcollege.edu/health-admissions for details.				
International students application deadline	June 1, 2025	June 1, 2025	June 1, 2025	June 1, 2025	June 1, 2025
Last day to apply for Study Abroad trips	Dates vary by trip. Visit stpe.co/studyabroad for details.				
REGISTRATION					
View classes	April 7, 2025	April 7, 2025	April 7, 2025	April 7, 2025	April 7, 2025
View textbook and General Education course syllabi	July 4, 2025	July 4, 2025	July 8, 2025	Aug. 1, 2025	Aug. 29, 2025
Special programs registration begins	April 21, 2025	April 21, 2025	April 21, 2025	April 21, 2025	April 21, 2025
Registration for all students begins	April 23, 2025	April 23, 2025	April 23, 2025	April 23, 2025	April 23, 2025
Senior citizens/state employees	Aug. 15, 2025	Aug. 15, 2025	Aug. 15, 2025	Sept. 12, 2025	Oct. 10, 2025
Last day to add a class	Aug. 20, 2025	Aug. 18, 2025	Aug. 23, 2025	Sept. 16, 2025	Oct. 13, 2025
TUITION/FINANCIAL AID					
Tuition/Fee payment due	July 19, 2025	July 19, 2025	July 19, 2025	Sept. 5, 2025	Oct. 3, 2025
FAFSA priority deadline date	May 1, 2025	May 1, 2025	May 1, 2025	May 1, 2025	May 1, 2025
Many funds are awarded on a first-come, first-serve basis, so the earlier you submit your FAFSA, the more funds you could be awarded.					
Payment Plan enrollment deadlines	Dates vary by trip. Visit stpe.co/studyabroad for details.				
Financial aid deadlines	Visit spcollege.edu/financial-aid-dates for all financial aid deadlines.				
LAST DAY TO DROP, RECEIVE REFUND, AND/OR CHANGE TO AUDIT					
Last Day to Drop With A Refund	Aug. 22, 2025	Aug. 22, 2025	Aug. 29, 2025	Sept. 19, 2025	Oct. 17, 2025
60% ATTENDANCE DATE					
60% Attendance Date	Oct. 21, 2025	Sept. 18, 2025	Oct. 21, 2025	Nov. 2, 2025	Nov. 13, 2025
LAST DAY TO WITHDRAW *WITH GRADE OF "W"					
Last Day to withdraw with Grade of "W" (70% date)	Nov. 1, 2025	Sept. 24, 2025	Oct. 31, 2025	Nov. 10, 2025	Nov. 18, 2025
Last Day to withdraw with Grade of "WF"	Dec. 11, 2025	Oct. 9, 2025	Dec. 7, 2025	Dec. 11, 2025	Dec. 11, 2025
* FINANCIAL ASSISTANCE RECIPIENTS:	If you completely withdraw from the College anytime on or before the dates of your session, you may incur repayment of Financial Assistance funds. See financial aid withdrawal deadlines.				
EXAMS					
Mid-term exams (online)	Oct. 10-12, 2025	TBD by instructor	TBD by instructor	TBD by instructor	TBD by instructor
Final exams (online)	Dec. 5-7, 2025	TBD by instructor	TBD by instructor	Dec. 5-7, 2025	TBD by instructor
Final exams	Dec. 8-11, 2025	TBD by instructor	TBD by instructor	Dec. 8-11, 2025	TBD by instructor
GRADUATION					
Name in Program Deadline	TBA	TBA	TBA	TBA	TBA
Commencement	TBA	TBA	TBA	TBA	TBA
NO CLASSES FOR STUDENTS (ALSO SEE COLLEGE CLOSED DATES BELOW)					
Discovery Day	Oct. 28, 2025	Oct. 28, 2025	Oct. 28, 2025	Oct. 28, 2025	Oct. 28, 2025
Winter Break *(students may take classes during SPC's Winter Session)	Dec. 13, 2025 - Jan.19, 2026	Dec. 13, 2025 - Jan. 19, 2026	Dec. 13, 2025 - Jan. 19, 2026	Dec. 13, 2025 - Jan. 19, 2026	Dec. 13, 2025 - Jan. 19, 2026
COLLEGE CLOSED					
Labor Day	Sept. 1, 2025	Sept. 1, 2025	Sept. 1, 2025	Sept. 1, 2025	Sept. 1, 2025
Veterans Day (observed)	Nov. 11, 2025	Nov. 11, 2025	Nov. 11, 2025	Nov. 11, 2025	Nov. 11, 2025
Veterans Day	Nov. 11, 2025	Nov. 11, 2025	Nov. 11, 2025	Nov. 11, 2025	Nov. 11, 2025
Thanksgiving Break	Nov. 23-29, 2025	Nov. 23-29, 2025	Nov. 23-29, 2025	Nov. 23-29, 2025	Nov. 23-29, 2025
Winter Break	Dec. 20, 2025 - Jan. 4, 2026	Dec. 20, 2025 - Jan. 4, 2026	Dec. 20, 2025 - Jan. 4, 2026	Dec. 20, 2025 - Jan. 4, 2026	Dec. 20, 2025 - Jan. 4, 2026
FACULTY SCHEDULE					
Faculty return	Aug. 14, 2025	Aug. 14, 2025	Aug. 14, 2025	Aug. 14, 2025	Aug. 14, 2025
Students may access their classes on Canvas at the latest by the Friday prior to the first day of classes.					
Last working day	Dec. 12, 2025	Dec. 12, 2025	Dec. 12, 2025	Dec. 12, 2025	Dec. 12, 2025
Final grades due in PS by 2 p.m.	Dec. 12, 2025	Oct. 10, 2025	Dec. 12, 2025	Dec. 12, 2025	Dec. 12, 2025
Discovery Day	Oct. 28, 2025	Oct. 28, 2025	Oct. 28, 2025	Oct. 28, 2025	Oct. 28, 2025

SPC ACADEMIC CALENDAR WINTER SESSION 2025-26 | SPRING 2026

Calendar subject to change. For an updated calendar of academic events, visit spcollege.edu/calendar.

Calendar subject to change. For an updated calendar of academic events, visit spcollege.edu/calendar .	WINTER SESSION	SPRING FULL TERM	1ST 8-WEEK SESSION	WEEKEND COLLEGE	12-WEEK EXPRESS SESSION	2ND 8-WEEK SESSION
TERM/SESSION DATES						
First day of term/session	Dec. 15, 2025	Jan. 20, 2026	Jan. 20, 2026	Jan. 23, 2026	Feb. 16, 2026	March 23, 2026
Last day of term/session	Jan. 2, 2026	May 15, 2026	March 13, 2026	May 10, 2026	May 15, 2026	May 15, 2026
ADMISSIONS						
Application deadline for non-health programs, including Bachelor's programs	Admission to programs are aligned to students' first term (or session) at SPC and do not observe specific deadlines.					
Health programs admissions deadlines	Dates vary by program. Visit spcollege.edu/health-admissions for details.					
International students application deadline	Oct. 1, 2025	Oct. 1, 2025	Oct. 1, 2025	Oct. 1, 2025	Oct. 1, 2025	Oct. 1, 2025
Last day to apply for Study Abroad trip	Dates vary by trip. Visit stpe.co/studyabroad for details.					
REGISTRATION						
View classes	Oct. 13, 2025	Oct. 13, 2025	Oct. 13, 2025	Oct. 13, 2025	Oct. 13, 2025	Oct. 13, 2025
View textbook and General Education course syllabi	Oct. 31, 2025	Dec. 6, 2025	Dec. 6, 2025	Dec. 6, 2025	Dec. 6, 2025	Dec. 6, 2025
Special programs registration begins	Oct. 27, 2025	Oct. 27, 2025	Oct. 27, 2025	Oct. 27, 2025	Oct. 27, 2025	Oct. 27, 2025
Registration for all students begins	Oct. 29, 2025	Oct. 29, 2025	Oct. 29, 2025	Oct. 29, 2025	Oct. 29, 2025	Oct. 29, 2025
Senior citizens/state employees		Jan. 16, 2026	Jan. 16, 2026	Jan. 16, 2026	Feb. 13, 2026	March 20, 2026
Last day to add a class	Dec. 15, 2025	Jan. 22, 2026	Jan. 20, 2026	Jan. 24, 2026	Feb. 17, 2026	March 23, 2026
TUITION/FINANCIAL AID						
Tuition/Fee payment due		Dec. 21, 2025	Dec. 21, 2025	Dec. 21, 2025	Feb. 6, 2026	March 13, 2026
FAFSA priority deadline date	Oct. 1, 2025	Oct. 1, 2025	Oct. 1, 2025	Oct. 1, 2025	Oct. 1, 2025	Oct. 1, 2025
Many funds are awarded on a first-come, first-serve basis, so the earlier you submit your FAFSA, the more funds you could be awarded.						
Payment Plan enrollment deadlines	Visit spcollege.edu/payment-plan for all tuition payment plans.					
Financial aid deadlines	Visit spcollege.edu/financial-aid-dates for all financial aid deadlines.					
LAST DAY TO DROP, RECEIVE REFUND, AND/OR CHANGE TO AUDIT						
Last Day to Drop With A Refund	Dec. 19, 2025	Jan. 24, 2026	Jan. 24, 2026	Jan. 30, 2026	Feb. 20, 2026	March 27, 2026
60% ATTENDANCE DATE						
60 Present Attendance	Dec. 25, 2025	April 1, 2026	Feb. 20, 2026	March 31, 2026	April 12, 2026	April 23, 2026
LAST DAY TO WITHDRAW/DROP WITH GRADE OF "W"						
Last Day to withdraw/drop with Grade of "W"	Dec. 27, 2025	April 12, 2026	Feb. 25, 2026	April 10, 2026	April 20, 2026	April 28, 2026
LAST DAY TO WITHDRAW/DROP WITH GRADE OF "WF"						
Last Day to withdraw/drop with Grade of "WF"	Jan. 1, 2026	May 14, 2026	March 12, 2026	May 10, 2026	May 14, 2026	May 14, 2026
* FINANCIAL ASSISTANCE RECIPIENTS:	If you completely withdraw from the College anytime on or before the dates of your session, you may incur repayment of Financial Assistance funds. See financial aid withdrawal deadlines.					
EXAMS						
Mid-term exams (online)	TBD by instructor	Feb. 27-March 1, 2026	TBD by instructor	TBD by instructor	TBD by instructor	TBD by instructor
Final exams (online)	TBD by instructor	May 8-10, 2026	TBD by instructor	May 8-10, 2026	TBD by instructor	TBD by instructor
Final exams	TBD by instructor	May 11-14, 2026	TBD by instructor	May 7-9, 2026	May 11-14, 2026	TBD by instructor
GRADUATION						
Name in Program Deadline	TBD	TBD	TBD	TBD	TBD	TBD
Commencement	TBD	TBD	TBD	TBD	TBD	TBD
COLLEGE CLOSE						
Martin Luther King Jr's Birthday		Jan. 19, 2026	Jan. 19, 2026	Jan. 19, 2026	Jan. 19, 2026	Jan. 19, 2026
Spring Break		March 15-21, 2026	March 15-21, 2026	March 15-21, 2026	March 15-21, 2026	March 15-21, 2026
Spring Holiday		April 3-5, 2026	April 3-5, 2026	April 3-5, 2026	April 3-5, 2026	April 3-5, 2026
FACULTY SCHEDULE						
Faculty return		Jan. 16, 2026	Jan. 16, 2026	Jan. 16, 2026	Jan. 16, 2026	Jan. 16, 2026
Students may access their classes on Canvas at the latest by the Friday prior to the first day of classes.						
Last working day		May 15, 2026	May 15, 2026	May 15, 2026	May 15, 2026	May 15, 2026
Final grades due in PS by 2 p.m.	Jan. 2, 2026	May 15, 2026	March 13, 2026	May 15, 2026	May 15, 2026	May 15, 2026

SPC ACADEMIC CALENDAR

SUMMER TERM 2026

Calendar subject to change. For an updated calendar of academic events, visit spcollege.edu/calendar.

	SUMMER FULL TERM	1ST 8-WEEK SESSION	WEEKEND COLLEGE	6-WEEK EXPRESS SESSION	2ND 8-WEEK SESSION
TERM/SESSION DATES					
First day of term/session	May 26, 2026	May 26, 2026	May 30, 2026	June 22, 2026	June 8, 2026
Last day of term/session	July 31, 2026	July 17, 2026	July 26, 2026	July 31, 2026	July 31, 2026
ADMISSIONS					
Application deadline for non-health programs, including Bachelor's programs	Admission to programs are aligned to students' first term (or session) at SPC and do not observe specific deadlines.				
Health programs admissions deadlines	Dates vary by program. Visit spcollege.edu/health-admissions for details.				
International students application deadline	March 1, 2026	March 1, 2026	March 1, 2026	March 1, 2026	March 1, 2026
Last day to apply for Study Abroad trips	Dates vary by trip. Visit stpe.co/studyabroad for details.				
REGISTRATION					
View classes	March 16, 2026	March 16, 2026	March 16, 2026	March 16, 2026	March 16, 2026
View textbook and General Education course syllabi	April 11, 2026	April 11, 2026	April 11, 2026	April 11, 2026	April 11, 2026
Special programs registration begins	March 30, 2026	March 30, 2026	March 30, 2026	March 30, 2026	March 30, 2026
Registration for all students begins	April 1, 2026	April 1, 2026	April 1, 2026	April 1, 2026	April 1, 2026
Senior citizens/state employees	May 22, 2026	May 22, 2026			
Last day to add a class	May 27, 2026	May 26, 2026	May 31, 2026	June 23, 2026	June 8, 2026
TUITION/FINANCIAL AID					
Tuition/Fee payment due	April 26, 2026	April 26, 2026	April 26, 2026	June 12, 2026	May 29, 2026
FAFSA priority deadline date	Feb. 1, 2026	Feb. 1, 2026	Feb. 1, 2026	Feb. 1, 2026	Feb. 1, 2026
Many funds are awarded on a first-come, first-serve basis, so the earlier you submit your FAFSA, the more funds you could be awarded.					
Payment Plan dates	Visit spcollege.edu/payment plan for all tuition payment plans.				
Financial aid deadlines	Visit spcollege.edu/financial-aid-dates for all financial aid deadlines.				
LAST DAY TO DROP, RECEIVE REFUND, AND/OR CHANGE TO AUDIT					
Last Day to Drop, Receive Refund	May 30, 2026	May 30, 2026	June 6, 2026	June 26, 2026	June 12, 2026
60% ATTENDANCE DATE					
60% Attendance Date	July 4, 2026	June 26, 2026	July 3, 2026	July 14, 2026	July 9, 2026
LAST DAY TO WITHDRAW *WITH GRADE OF "W"					
Last Day to Withdraw with Grade of "W" (70% rate)	July 10, 2026	July 1, 2026	July 9, 2026	July 18, 2026	July 14, 2026
LAST DAY TO WITHDRAW *WITH GRADE OF "WF"					
Last Day to Withdraw with Grade of "WF"	July 30, 2026	July 16, 2026	July 26, 2026	July 30, 2026	July 30, 2026
* FINANCIAL ASSISTANCE RECIPIENTS:	If you completely withdraw from the College anytime on or before the dates of your session, you may incur repayment of Financial Assistance funds. See financial aid withdrawal deadlines.				
EXAMS					
Mid-term exams (online)	June 26-28, 2026	TBD by instructor	TBD by instructor	TBD by instructor	TBD by instructor
Final exams (online)	July 24-26, 2026	TBD by instructor	TBD by instructor	TBD by instructor	TBD by instructor
Final exams	July 29-30, 2026	TBD by instructor	July 21-25, 2026	July 29-30, 2026	TBD by instructor
GRADUATION					
SPC does not hold commencement in the Summer.					
COLLEGE CLOSED					
Memorial Day	May 25, 2026	May 25, 2026	May 25, 2026	May 25, 2026	May 25, 2026
Juneteenth	June 19, 2026	June 19, 2026	June 19, 2026	June 19, 2026	June 19, 2026
Independence Day (observed)	July 3, 2026	July 3, 2026	July 3, 2026	July 3, 2026	July 3, 2026
FACULTY SCHEDULE					
Faculty return	May 26, 2026	May 26, 2026	May 26, 2026	May 26, 2026	May 26, 2026
Students may access their classes on Canvas at the latest by the Friday prior to the first day of classes.					
Last working day	July 31, 2026	July 31, 2026	July 31, 2026	July 31, 2026	July 31, 2026
Summer break	May 16-Aug. 13, 2026	May 16-Aug. 13, 2026	May 16-Aug. 13, 2026	May 16-Aug. 13, 2026	May 16-Aug. 13, 2026
Final grades due in PS by 2 p.m.	July 31, 2026	July 17, 2026	July 31, 2026	July 31, 2026	July 31, 2026



Allstate Center (AC)

3200 34th St. S. St. Petersburg, FL 33711

Map: Page 23

Provost: Leslie Hafer 727-341-4554

Associate Provost: Denotra Showers 727-791-2456

Accessibility Services 727-341-4316

Recruitment: Nathan Larkins 727-341-3714

Student Support Manager: Ryan Marsh 727-641-7250



Bay Pines STEM Center (STEM)

4723 Bay Pines Terr. St. Petersburg, FL 33708

Provost: Leslie Hafer 727-341-4554



Caruth Health Education Center (HEC)

7200 66th St. N. Pinellas Park, FL 33781

Map: Page 24

Provost (Acting): Lisa Borzewski 727-394-6109

Associate Provost: Damon Kuhn 727-341-3602

Accessibility Services 727-341-3432

Recruitment: Celeste Daniele 727-341-3585

Student Support Manager: Dawn Janusz 727-341-3767



Clearwater Campus (CL)

2465 Drew St. Clearwater, FL 33765

Map: Page 25

Provost: Tashika Griffith 727-791-2474

Associate Provost: Cheri DeBlaere 727-791-2492

Academic Services: Brocdyl Porta 727-614-7252

Accessibility Services 727-791-2710

Recruitment: Angeliki Kontodiakos 727-791-2544

Student Support Manager: Albert Aumack 727-712-5779



Downtown Center (DT)

244 Second Ave. N. St. Petersburg, FL 33701

Map: Page 26

Provost: Keron Jean-Baptise 727-341-4349

Associate Provost: Brooke Janik 727-341-4248

Academic Services: Djuan Fox 727-341-3334

Accessibility Services 727-341-3216

Recruitment: Nathan Larkins 727-341-3714

Student Support Manager: Chaye Smith 727-341-7157



EpiCenter (EPI)

13805 58th St. N. Clearwater, FL 33760

Map: Page 27

Provost: Tashika Griffith 727-791-2474

Dean Workforce Development & Corp. P'ships: Belinthia Berry 727-341-4279

Executive Director Collaborative Labs: Andrea Henning 727-341-3154



Director, Workforce Education: Margie Burnham 727-341-3508
Director, Corporate & Continuing Education: Maginda Montero 727-341-4346
Director, Workforce Strategic Initiatives: Marie Couch 727-341-3198
Accessibility Services 727-302-6445

Midtown Center (MT)

Douglas L. Jamerson, Jr. Midtown Center
1300 22nd St. S. St. Petersburg, FL 33712
Cecil B. Keene, Sr. Student Achievement Center
1048 22nd S. St. St. Petersburg, FL 33712
Maps: Page 28-29
Provost: Keron Jean-Baptiste 727-341-4349
Associate Provost: Yvonne Williams 727-302-6436
Academic Services: Djuan Fox 727-341-3334
Accessibility Services 727-302-6445
Recruitment: Nathan Larkins 727-341-3714
Student Support Manager: Takita Cuthbertson 727-341-4248

Seminole Campus (SE)

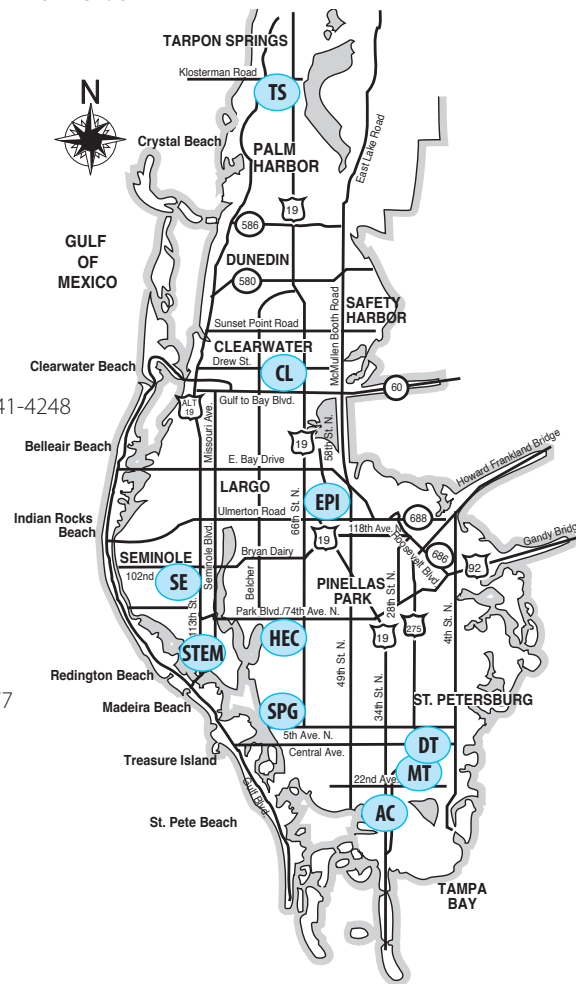
9200 113th St. N. Seminole, FL 33772
Map: Page 30
Provost (Acting): Lisa Borzewski 727-394-6109
Associate Provost (Acting): Davie Gill 727-394-6109
Academic Services: Amber Estlund 727-341-7180
Accessibility Services 727-394-6289
Recruitment: Donna Reynolds 727-394-6994
Student Support Manager: Molly Sutton 727-394-6277

St. Petersburg/Gibbs Campus (SP/G)

6605 Fifth Ave. N. St. Petersburg, FL 33710
Map: Page 31
Provost: Leslie Hafer: 727-341-4554
Associate Provost: Denotra Showers 727-791-2456
Academic Services: Stephen Andrasik 727-341-4275
Accessibility Services 727-341-4316
Recruitment: Christian Giron 727-341-4744
Student Support Manager: Ryan Marsh 727-641-7250

Tarpon Springs Campus (TS)

600 E. Klosterman Rd. Tarpon Springs, FL 34689
Map: Page 32
Provost: Rodrigo Davis 727-712-5720
Associate Provost: Damon Kuhn 727-341-3602
Academic Services: Shannon Ulrich 727-791-2448
Accessibility Services 727-341-4141
Recruitment: Juan Sebastian Amado 727-712-5883
Student Support Manager: Theresa Kontodiakos 727-712-5451



Did you Know?

Through an agreement with Pinellas Suncoast Transit Authority (PSTA), **students can enjoy FREE bus service by showing a current student ID card** when boarding a PSTA bus. Visit spcollege.edu/free-bus-rides for more information.

CAREER AND ACADEMIC COMMUNITIES CONTACTS

spcollege.edu/degrees-training



Arts, Humanities, and Design

spcollege.edu/arts-humanities-design

Dean Barbara Hubbard	727-334-6011
Associate Dean Nathan Muehl	727-341-4325
Jeffrey Fabiszewski – CL	727-791-2548
Donna Williams – SE	727-394-6119
Evelyn Case – SP/G	727-341-4360



Business

spcollege.edu/business

Dean Emmanuel Hernandez-Agosto	727-712-5407
Associate Dean Mike Ewell	727-791-2610
Lori Kelly	727-302-6650



Communications

spcollege.edu/communications

Dean Joseph Leopold	727-791-3719
Assistant Dean (Acting) Sharon Williams – DT, MT, SE and SP/G	727-344-8052
Assistant Dean Ian Wilson – CL and TS	727-398-8201



Education

spcollege.edu/education

Dean Heather Duncan	727-712-5892
Associate Dean Jessica Curtis	727-444-6325
Educational Studies/EPI – Micheal Poulin – SP/G	727-791-2788
EPI/Post Baccalaureate Studies – Pat Roper – TS	727-712-5410
Teacher Certification/AA – Pam Wilkins – TS	727-712-5888
Teacher Certification/AA –Erika Martinez – TS	727-394-6281



Engineering, Manufacturing, and Building Arts

spcollege.edu/engineering-manufacturing-building-arts

Dean Natavia Middleton	727-398-8288
Program Director – Sidney Martin – CL	727-394-6203
Summer Spark-Warren – CL	727-791-2420
Laurel Lynch – TS	727-394-6117



Health Sciences and Veterinary Technology

spcollege.edu/health-sciences-veterinary-technology

Dean of Health Services/Sciences – Deanna Stentiford	727-341-4189
Assistant Dean College of Health Services – Todd Van Auken	727-341-3474
Dental Hygiene - Barbara Mulholland	727-302-6630
Emergency Medical Services – Ralph Sibbio	727-371-3726
Funeral Services – Kevin Davis	727-341-3781
Health Info Technology – (Acting) Kengia Sabree	727-341-3623
Health Sciences/Services – Stephanie Watkins	727-444-6211
Physical Therapy Assistant – Kory Thomas	727-341-3612
Radiography – John Fleming	727-341-3627
Respiratory Care – Steve Hardt	727-341-3627
Surgical Services – Ashley Lake	727-614-7068

CAREER AND ACADEMIC COMMUNITIES CONTACTS

spcollege.edu/degrees-training

NURSING
 Dean of Nursing Jean Lee 727-341-3473
 Associate Dean of Nursing (Acting) Heather Chastain 727-341-3475
 Nursing Bachelor's Degrees 727-341-3622
 Nursing ADN (RN) Heather Austin 727-347-4239
 Nursing ADN (RN) Chelsea Quaglia 727-341-3716

VETERINARY TECHNOLOGY
 Dean Natavia Middleton 727-398-8288
 Tricia Gorman 727-302-6733
 Irene McDade 727-302-6712



Public Safety, Public Policy, Ethics, and Legal Studies

spcollege.edu/public-safety-public-policy-legal-studies

Dean Susan Demers 727-791-2501
 Assistant Dean 727-791-2656
 Assistant Dean Applied Ethics – Eric Abercrombie 727-394-6035
 Applied Ethics Institute – Minerva Veaser-Bobea 727-341-3222
 Bachelor's Public Safety Administration 727-341-4490
 Bachelor's Public Policy/Admin. – Jeffrey Kronschnabl 727-394-6205
 Center for Public Safety Information – Eileen LaHaie 727-341-4502
 Criminal Justice Lower Division 727-341-4490
 Criminal Justice Indoor Range – Don Kiefhaber 727-341-4119
 Criminal Justice Academies – Micheal Dibuono 727-614-7026
 Emergency Medical Services – Ralph Sibbio 727-341-3726
 Fire Academy – Steve Marfongella 727-341-3332
 Paralegal Studies – Destini White 727-614-7223
 Training Center Director 727-614-7026



Science and Mathematics

spcollege.edu/science-mathematics

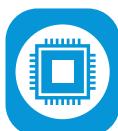
Mathematics Dean Jimmy Chang 727-341-4305
 Assistant Dean Mathematics – Hannah Johnson 727-791-2559
 Assistant Dean Mathematics – Pelagia Kilgore 727-398-8493
 Science Dean Natavia Middleton 727-398-8288
 Assistant Dean Natural Science – Grace Moore 727-341-4374
 Assistant Dean Natural Science – Erica Moulton 727-444-6005
 Admin. Sheila Wootters 727-341-4306



Social and Behavioral Sciences and Human Services

spcollege.edu/social-behavioral-sciences-human-services

Dean Joseph Smiley 727-712-5851
 Assistant Dean – Douglas Rivero 727-394-6948
 Assistant Dean – Todd Irvine 727-341-4421
 Program Director Human Services – Latresha Bigham-Moore 727-497-5015



Technology

spcollege.edu/technology

Dean (Acting) – Jimmy Chang 727-341-7176
 Associate Dean – John Long 727-341-4620
 Sara Cary-Liggett 727-302-6494

College Administration Contacts

College Administration Hours*

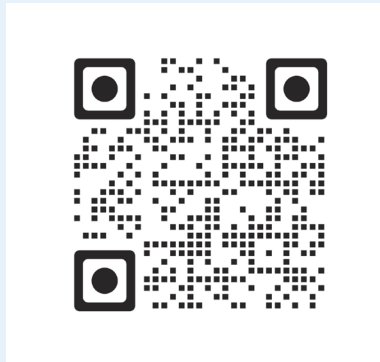
Mon. - Thur. 8:30 a.m.-5:30 p.m. ET

Friday 8:30 a.m.-1 p.m. ET

*See weblinks below for extended and limited on-campus and online/virtual availability.

Campus Legend

AC	Allstate Center	HEC	Health Education Center
STEM	Bay Pines STEM Center	MT	Midtown Center
CL	Clearwater Campus	SE	Seminole Campus
DT	Downtown Center	SP/G	St. Petersburg/Gibbs Campus
EPI	EpiCenter	TS	Tarpon Springs Campus



contactdirectory.spcollege.edu

Accessibility Services

ADA/504 – Officer
Admin. Assistant – Rita Ajazi
Assistive Technology – Regina Miller
Assistive Technology – Jaiden Dean
Interpreting/Captioning/Sign Language –
Stephanie Wyatt

spcollege.edu/accessibility-services

727-341-3721 ADA504e@spcollege.edu
727-341-4510
727-341-3146
727-341-3264

727-791-5942

ONLINE HELP

Contact Information
Register and Request Assistance

spcollege.edu/accessibility-services-contacts

spcollege.edu/accessibility-services

CAMPUS HELP

AC 727-341-4316
CL 727-791-2710
DT 727-341-3216
EPI 727-302-6445
HEC 727-341-3432
MT 727-302-6445
SE 727-394-6289 (also Vet Tech students)
SP/G 727-341-4316
TS 727-341-4141

Admissions & Records

spcollege.edu/admissions

727-341-7141

Bachelor's Programs (Non-Health) – David White
 Collegewide Testing – Sean Murren
 Transfer Programs – Sheryl Mundorff

727-341-4725
 727-341-3032
 727-791-2763

ONLINE HELP

Admissions
 Graduation
 Health Programs Admission
 Name/Record Change
 Residency
 Testing
 Transcripts
 Transfer Programs
 Transient Students

spcollege.edu/admissions
spcollege.edu/graduation
spcollege.edu/health-admissions
spcollege.edu/forms-online
spcollege.edu/residency
spcollege.edu/testing
spcollege.edu/transcripts
spcollege.edu/special-programs
spcollege.edu/transient-students

admissions.records@spcollege.edu
graduationquestions@spcollege.edu

residencydocuments@spcollege.edu
testing@spcollege.edu
spctranscripts@spcollege.edu
mundorff.sheryl@spcollege.edu
transientquestions@spcollege.edu

CAMPUS HELP – STUDENT SERVICES OFFICE

AC	AC 100	727-341-3750
CL	LA 100	727-341-4772
DT	DC 101M	727-341-4249
HEC	Room 173	727-341-4772
MT	MTJC 105A (Lobby)	727-341-7156
SE	UP 120 Front Desk	727-394-6083
SP/G	SU 137	727-341-4614
TS	Administration Bldg.	727-712-5750

Advising - Career & Academic Advising

spcollege.edu/advising

727-341-4772

ONLINE HELP

Appointments: 30-minute Phone, Virtual, or In-person
 Virtual Advising Center: Phone or Virtual via Microsoft Teams
 Find your Advisor
 Health Programs – Make an Appointment

spcollege.edu/advising
spcollege.edu/advising
spcollege.edu/advising
stpe.co/healthprogramadvising

CAMPUS HELP – STUDENT SERVICES OFFICE

AC	AC 100
CL	LA 100
DT	DC 101N
HEC	HE 173 – Student Affairs
MT	MTJC 105
SE	UP 120 – Student Service Center
SP/G	SU 137
TS	Administration Building

Athletics

athletics.spcollege.edu

727-341-4777

Director, Earnest Crumbley, Sr. 727-341-4696
 Jennifer Chen 727-341-4777

chen.jennifer@spcollege

Bookstore – Barnes & Noble

spcollege.bncollege.com

ONLINE HELP

Order Books
 Paying for Your Books

spcollege.bncollege.com/course-material/course-finder
spcollege.edu/paying-for-your-textbooks
spcollege.bncollege.com/customer-service

CAMPUS LOCATIONS

CL	ST Building
HEC	Room 184

727-431-4029
 727-202-3603

SE	Near Library	727-202-3542
SP/G	SS 104	727-347-0310
TS	BB Building	727-940-9019

Business Office

727-341-4772

ONLINE HELP

Florida Pre-Paid Tuition	spcollege.edu/florida-prepaid	prepaid@spcollege.edu
Pay tuition	spcollege.edu/tuition	
Tuition Fee Waivers & Exemptions	spcollege.edu/tuition-waivers	

CAMPUS HELP – STUDENT SERVICES OFFICE

AC	AC 100	727-341-3750
CL	LA 100	727-791-2687
DT	DC 101M	727-341-3427
HEC	Room 173	727-341-3427
MT	MTJC 105A	727-341-7156
SE	UP 120 – Student Service Center	727-394-6134
SP/G	SU 103	727-341-4300
TS	Administration Bldg.	727-712-5460

Career Development Services

spcollege.edu/career-services

727-791-2408

ONLINE HELP

Contact Us	spcollege.edu/contact-career-services
Career Exploration	spcollege.edu/career-exploration
Hire SPC Titans – Job Board	spcollege.joinhandshake.com
Internships	spcollege.edu/internships
Resume and Interview Assistance	spcollege.edu/resume-interview-assistance

CAMPUS HELP – CAREER READINESS NAVIGATORS

AC	Fabre Williams	727-341-4256
CL	Dean Patricia Watts	727-791-2408
DT	Brandon Hodges	727-341-4183
HEC	Zachary Remis	727-341-3736
MT	Brandon Hodges	727-341-4183
SE	Aundra Williams	727-712-5443
SP/G	Fabre Williams	727-341-4254
TS	Carissa Roldan	727-497-5030

Emergency Management

spcemergency.com

727-791-2560

Emergencies	Call 911 then 727-791-2560
Collegewide Dispatch	727-791-2560
SPC Toll-Free	866-822-3978

ONLINE HELP

College Emergency Information	spcemergency.com
Emergency Response Guide	stpe.co/emergencyresponseguide
Sign Up for Emergency Alerts	spcemergency.com/receiving-alerts
SPC Safety and Security	spcollege.edu/safety-security

CAMPUS HELP – SECURITY OFFICES

AC	Main Building	727-341-4436
CL	BT 113	727-791-2764
DT	Lobby near Parking Garage	727-341-4262
HEC	HE 104D	727-791-2560
MT	MTJC 118	727-398-8267
SE	UP 101	727-791-2560

SP/G SU 120
TS Agora Bldg. – AG 102-104

727-791-2560
727-791-2560

Financial Aid

spcollege.edu/AskFAS

727-791-2485

ONLINE HELP

Ask PETE our Chatbot a question 24/7/365
Submit Your Question Online
How to Pay for College
FAFSA
Financial Aid TV videos
Florida Pre-Paid College Questions
Book Line of Credit
Disbursement/Refund Dates
Receiving Financial Aid
Student Employment
Scholarships
Satisfactory Academic Progress
Student Loan Questions – Ion tuition™
Withdrawing From Class
Important Dates

PETE is in the right corner at spcollege.edu/financial-aid
stpe.co/askfasrequest
spcollege.edu/financial-aid
studentaid.gov
spcollege.financialaidtv.com
prepaid@spcollege.edu
spcollege.edu/book-line-of-credit
spcollege.edu/financial-aid-refunds
spcollege.edu/receiving-financial-aid
spcollege.edu/student-employment
spcollege.edu/scholarships
spcollege.edu/sap
Sign on through MySPC or 855-693-4932
spcollege.edu/withdrawals
spcollege.edu/financial-aid-dates

CAMPUS HELP – Check website for hours at each location

AC Main Building
CL LA 100
DT DC 101 J
HEC HE 173
MT MTJC 109
SE UP 120 – Student Service Center
SP/G SU 107
TS Administration Building

Food Services

spcollege.edu/food-services

AC AC 129 – Common Ground Café
CL ES Building – Nature's Table Clearwater
DT 1st Floor – Nature's Table DTSP
HEC HE 204 – Nature's Table HEC – 2nd floor
MT MTJC 150 – Deuces Den Lounge
SE UPC 1st Flr. Lobby – Nature's Table Seminole
SP/G LI Building – Nature's Table Gibbs
TS BB Bldg. – Nature's Table Tarpon

clearwater.naturestable.com 727-669-2424
dtsp.naturestable.com 727-822-8690
hec.naturestable.com 727-201-8772
spcollege.edu/food-services 727-614-7209
naturestable.com 727-319-0669
gibbs.naturestable.com 727-289-8772
tarpon.naturestable.com 727-940-6644

VENDING MACHINES

AC Main Building – AC 129
CL ES – All Floors/LS, SS, NM – 1st Floor/LI – 1st Floor, CR-A, ST
DT 2nd/4th Floors
HEC HE 204 – 2nd Floor (Cafeteria)
MT 2nd/3rd Floors
SE UP near Titan Lounge and TL Building
SP/G TE – 1st Floor/SC – 1st Floor/SA – 1st Floor/LA – 1st Floor/SU – 1st & 2nd Floor
TS Agora – Student Lounge/LY – 1st/2nd Floors/BB Building

High School Programs

spcollege.edu/high-school-programs

ONLINE HELP

Collegiate High Schools

spchs.spcollege.edu

Dual Enrollment
Early Admission
Early College

spcollege.edu/dual-enrollment
spcollege.edu/early-admission
spcollege.edu/early-college

CAMPUS HELP – EARLY TITANS: DUAL ENROLLMENT/EARLY COLLEGE/EARLY ADMISSION

CL	Jeff Cesta	727-791-5970
	Ana Cotto-Pizarro	727-791-5971
	Kelsey Brooks	727-791-5977
SE	Derek Bullard	727-394-6164
	Kristi L. Smith	727-394-6023
SP/G	Derek Bullard	727-394-6164
	Kristi L. Smith	727-394-6023
TS	Naly Lattenhauer	727-712-5281
	Ewa Rzadzka	727-712-5400

COLLEGIATE HIGH SCHOOLS

SPC STEM High School - Downtown Center	727-341-4249
Principal Raquel Hairston	727-341-4368
Asst. Principal Remus Bulmer	727-302-6770
Admin. Asst. Kim Corello	727-341-3459
SPC Collegiate High School – St. Petersburg/Gibbs Campus	727-341-4610
Principal Ian Call	727-341-3521
Asst. Principal Zanetta Robinson	727-712-5265
Admin. Asst. Martha Alvarez	727-341-4610
SPC Collegiate High School – Tarpon Springs Campus	727-712-5891
Principal Ryan Halstead	727-398-8465
Asst. Principal Stephanie Pawlowicz	727-712-5792
School Counselor Heidi Jolliffe	727-791-2774
Admin. Asst. Heidi De Oliveria	727-341-3212
Admin. Siobhan Byrne Peterson	

Honors Programs
spcollege.edu/honors-program
727-791-2708

Director, Earl Fratus
Linda Chang – CL 185

727-394-6045
727-791-2511

CAMPUS HELP

CL	Welcita Gann	727-791-5982
SE	Renee Kessing	727-394-6137
SP/G	Tara Hunter	727-302-6627

International Programs
spcollege.edu/international-programs

International Student Services – Angela Cole
International Student Services – Irene Chitikov
International Student Services – Ralph Regnier
International Student Admissions –
Eric Gonzalez-Franco
Study Abroad – Gloria Parrott
International Student Services
International Admissions
Study Abroad
Center for International Programs

727-791-2632
727-341-4734
727-341-4370
727-302-6510
727-341-4735
stpe.co/intstudents
Internationaladmissions@spcollege.edu
stpe.co/studyabroad
spcollege.edu/international-programs

CAMPUS HELP

CL LA Building – LA 190
SP/G SU Building – SU 332

Learning Resources

spcollege.edu/learning-resources

ONLINE HELP

Libraries & Learning Centers
Library Portal
How to get/use Student ID Card/Library Card
Info Guides
Tutoring – Make in-person appointment
Tutoring – Make online appointment
Accessing Tutoring through Brainfuse
Virtual Learning Commons

spcollege.edu/learning-resources
stpe.co/libraryportal
spcollege.edu/student-ID
spcollege.libguides.com/home
spcollege.libguides.com/inperson
spcollege.libcal.com/appointments
spcollege.libguides.com/brainfuse
stpe.co/virtuallearningcommons

CAMPUS HELP – HOURS:

spcollege.libguides.com/studentsneedtoknow

AC	Learning Resources Assc. Dir. – Josh Brown	727-341-3657
CL	LI 207 – Learning Center/Tutoring Services Library (LI)	727-791-2722 727-791-2614
	Learning Resources Assc. Dir. – Heather Meyer	727-791-2603
DT	DC 109 – Learning Center/Tutoring Services Math Tutoring	727-302-6588 727-302-6591
	Learning Resources Assc. Dir. – Heather Disler	727-344-8065
HEC	Room 195 – Library/Writing Studio	727-341-3604
	Room 199 – New Initiative Program (NIP) (Nursing and Health Tutoring Services)	727-341-3724
	Interim Learning Resources Assc. Dir. – Shilo Smith	727-341-3673
	NIP Instr. Support Mgr. – Lisa Leonard	727-341-3724
MT	MTJC 120 & 210 – Learning Center/Tutoring Services	727-398-8268
	Learning Resources Assc. Dir. – Heather Disler	727-344-8065
SE	TL 104 – Learning Center/Tutoring Services	727-394-6133
	Learning Resources Assc. Dir. – Jennifer Gregor	727-394-6184
SP/G	SU 203 – Learning Center/Tutoring Services	727-341-3512
	Library Writing Studio	727-341-7168
	SA 101 – Student Support Services	727-241-4372
	Learning Resources Assc. Dir. – Josh Brown	727-341-3657
TS	FA 135 – Learning Center/Tutoring Services	727-712-5719
	Learning Resources Assc. Dir. – Ethan Hart	727-712-5728

Library

spcollege.edu/libraries

ONLINE HELP

Libraries & Learning Centers
Library Portal
How to get/use Student ID Card/Library Card
Info Guides
Tutoring – Make in-person appointment
Tutoring – Make online appointment
Accessing Tutoring 24/7 through Brainfuse
Virtual Learning Commons

spcollege.edu/learning-resources
stpe.co/libraryportal
spcollege.edu/student-ID
spcollege.libguides.com/home
spcollege.libguides.com/inperson
spcollege.libcal.com/appointments
spcollege.libguides.com/brainfuse
stpe.co/virtuallearningcommons
spcollege.libguides.com/studentsneedtoknow

CAMPUS LOCATIONS – Hours:

AC	Main Bldg. – 2nd Floor	727-791-2416
CL	LI Bldg. – Clearwater East Community Library at SPC	727-791-2614
DT	DC 109 – Learning Center	727-302-6588
HEC	Room 191 – Library & Writing Center Services	727-341-3604
MT	MTJC 120 – Main Desk	727-398-8268
SE	LI Bldg. – Dennis L. Jones Seminole Community Library at SPC	727-394-6905

SP/G	LI Bldg. – West St. Petersburg Community Library at SP/G	727-341-7186
TS	FA Bldg. – SPC Tarpon Springs Campus	727-712-5719

Lost and Found – *See also Security*

AC	Main Building/Security	727-341-4436
CL	BT 113	727-791-2764
DT	DC 225	727-302-6772
HEC	HE 104D	727-791-2560
MT	MTJC	727-614-7209
SE	UP 101	727-394-6248
SP/G	SS 111 – Student Life & Leadership	727-341-4627
TS	Agora Bldg. – Security – AG 102-104	727-712-5790

Registration – *See Advising*
spcollege.edu/advising
Security

Collegewide Dispatch
Emergencies
SPC Toll-Free

spcollege.edu/safety-security
727-791-2560

727-791-2560
Call 911 then 727-791-2560
866-822-3978

ONLINE HELP

College Emergency Information
Sign Up for Emergency Alerts
Reporting Incidents

spcemergency.com
spcemergency.com/receiving-alerts
spcollege.edu/reporting-incidents
CAMPUS HELP – SECURITY OFFICES – NON-EMERGENCY ASSISTANCE

AC	Main Building	727-341-4436
CL	BT 113	727-791-2764
DT	Lobby near Parking Garage	727-341-4262
HEC	HE 104D	727-791-2560
MT	MTJC 105A – Student Services	727-341-7156
SE	UP 101	727-394-6248
SP/G	SU 120	727-791-2560
TS	Agora Building, AG 102-104	727-791-2560

Student Life and Leadership
spcollege.edu/student-life
ONLINE HELP

Events – Titan Connect by Presence
Event and Resources App
Student Clubs/Student Government Association

titanconnect.spcollege.edu

Search for Modern Campus Presence

spcollege.edu/student-life-leadership
CAMPUS HELP – STUDENT LIFE & LEADERSHIP COORDINATORS

AC	Charleston Fritts	727-341-4627
CL	Stephanie Henningsen	727-791-2623
HEC	Lauren Bauer	727-394-6118
DT	Gabrelle Payne	727-344-8047
MT	Gabrelle Payne	727-344-8047
SE	Lauren Bauer	727-394-6118
SP/G	Charleston Fritts	727-341-4627
TS	Jason Nicholson	727-614-7209

Student Lounges

CL	SS 162
DT	2nd Floor – DC 223

HEC HE 176
 MT MTJC 150 – Deuces Den Lounge
 SE UP 192
 SP/G SS Building
 TS Agora Building

Student Photo ID
spcollege.edu/student-ID
ONLINE HELP

Contact us
 How to get/use Student ID Card/Library Card

studentidcard@spcollege.edu
spcollege.edu/student-ID

CAMPUS LOCATIONS – Check website, or call for hours of operation.

AC	Main Building – AC 100	727-712-5843
CL	LI 207	727-791-2722
DT	Lobby near Parking Garage	727-241-4262
MT	MTJC 105A (Lobby) – Student Services	727-341-7156
HEC	Library Room 195	727-341-3604
SE	UP 192 Titan Lounge	727-394-6103
SP/G	SU 203	727-341-3512
TS	Library Front Desk	727-712-5719

Student Support Resources – *Titans Care Centers* spcollege.edu/titans-care-resources

Center of Excellence – Nikishea Wright	spcollege.edu/center-of-excellence	727-398-8498
College Reach-Out Program CROP – Keisha Blue	spcollege.edu/crop	727-341-4376
F.A.A.M.E. – North County	marshall.steve@spcollege.edu	727-712-5887
F.A.A.M.E. – South County	gant.ernest@spcollege.edu	727-302-6550
Food Pantry - Samantha Green	spcollege.edu/food-pantry	Call location near you
Mental Health Resources – Austin Crawford	spcollege.edu/counseling-services	727-341-4464
Power Network – Antonio Seay	spcollege.edu/Power-Network	727-341-7947
RISE – Austin Crawford	spcollege.edu/rise	727-341-4464
Student Support Services – Kelly Fried	spcollege.edu/sss	727-341-3024
Summer of Success	spcollege.edu/sos	727-341-3527
Technology Lending Program - Samantha Green	spcollege.edu/technology-lending	
Titans UP – Melissa Kent	spcollege.edu/titans-up	727-394-6160
TRIO Education Opp. Center – Tamica Green	spcollege.edu/educational-opportunity-center	727-394-4399

Technical Support

Email/call

studentsupport.spcollege.edu
onlinehelp@spcollege.edu

727-341-4357

Testing

Coordinator, Sean Murren
 Certification Testing – Julia Meyer, AC

spcollege.edu/testing

727-341-3032
 727-341-4760

testing@spcollege.edu
getcertified@spcollege.edu

CAMPUS LOCATIONS

CL	LA 100	727-791-2645
DT	DC 102	727-341-3254
HEC	HE 101 (limited test center)	727-341-4187
MT	MT 114	727-302-6637
SE	UP 105 – Student Service Center	727-394-6233
SP/G	SU 122	727-341-3582
TS	AD 125	727-712-5238

setesting@spcollege.edu
spgtesting@spcollege.edu
tstesting@spcollege.edu

Titan Connect
titanconnect.spcollege.edu

SPC event and resources App – Download by searching for Modern Campus Presence on your mobile device.

Transcripts – See Admissions & Records
spcollege.edu/transcripts
University Partnership Center
spcollege.edu/upc
727-394-6200

 AVP Academic Affairs & Partnerships,
 Catherine Kennedy – SE
 Administrative Services Specialist,
 Marina Laca – SE PH 102

727-394-6202

727-394-6200

laca.marina@spcollege.edu
ONLINE HELP

 Request Information
 Degrees by Discipline
 Degrees by Institution
 Bachelor's Degrees
 Graduate Degrees

stpe.co/upcinforequest
spcollege.edu/upc-degrees-by-discipline
spcollege.edu/upc-degrees-by-institution
spcollege.edu/upc-bachelors-degrees
spcollege.edu/upc-graduate-degrees
Veterans Services
spcollege.edu/veterans-services
727-341-7990

 Coordinator, Alison Shenofsky
 Main line – Call for appts.

727-394-6204

727-341-7990

veteransservices@spcollege.edu
CAMPUS HELP

 CL Rob Lodato – SS 102A
 CL Kat Foley – SS 102A
 SE Sarah Mauter – UP 179
 SP/G David Humpel – SU 331

727-341-4229

727-614-7214

727-394-6258

727-341-4271

We're on the Way
spcollege.edu/wow
727-791-2555

Coordinator, Shirley Crumbley

727-791-2555

CAMPUS HELP

 CL Tara Allen – SS 107
 SE Pepper Harth – UP 115
 SP/G Bianca Cage – SU 231

727-791-2634

727-341-4561

727-398-8468

Workforce, Community, and Corporate Partnerships
727-341-4445

 Dean Workforce Dev. & Corp. P'ships, Belinthia Berry
 Exec. Adm. Serv. Spec., Diane Salmon
 Director Workforce Education, Margie Burnham
 Director Corp. & Cont. Education, Maginda Montero
 Director Workforce Strategic Initiatives, Marie Couch
 Exec. Dir Collaborative Labs, Andrea Henning

727-341-4279

727-341-3311

727-341-3508

727-341-4346

727-341-3198

727-341-3154

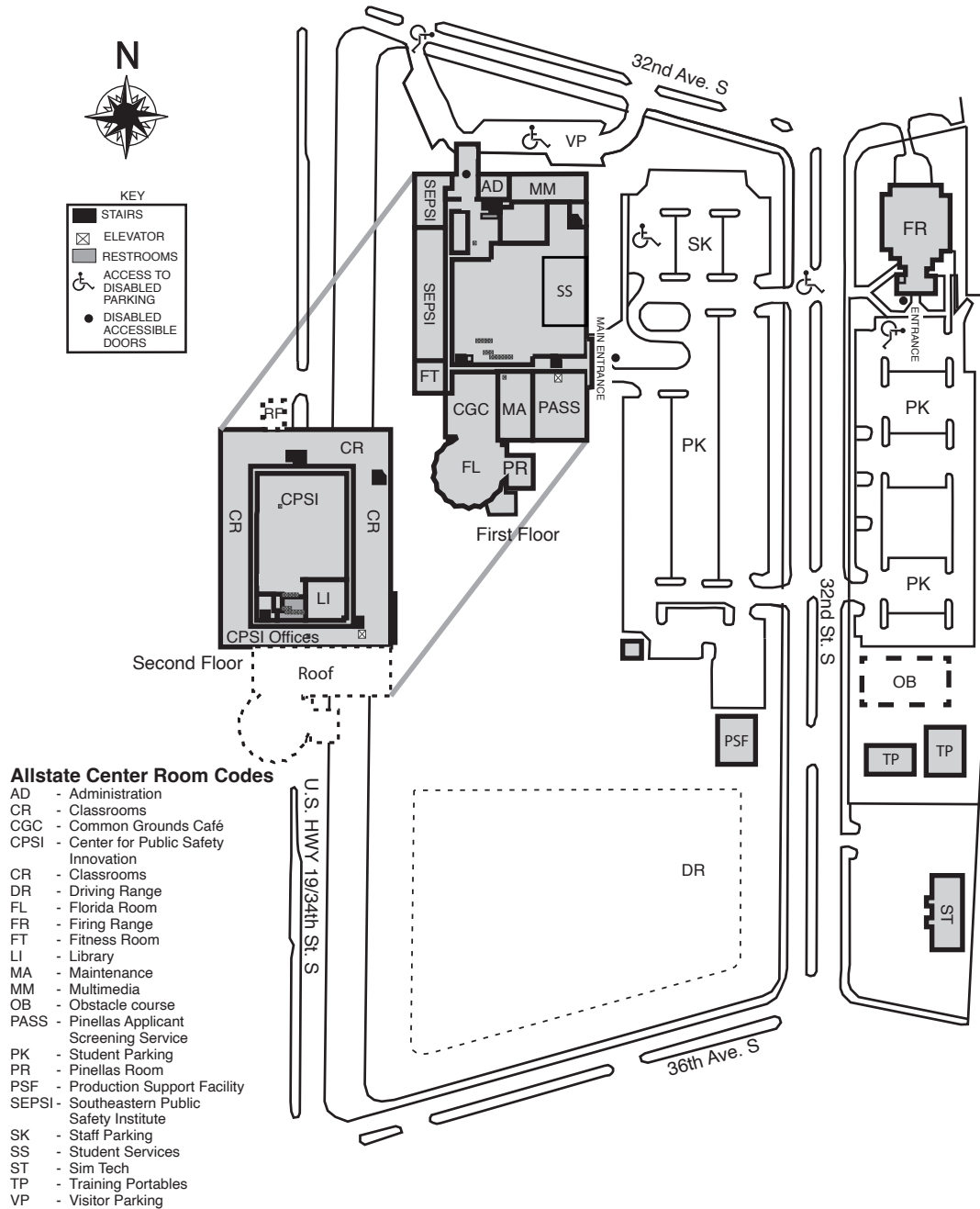
workforce@spcollege.edu
ONLINE HELP

 Short-Term Training (STM)
 Browse Available Courses

spcollege.edu/workforce
spcollege.augusoft.net

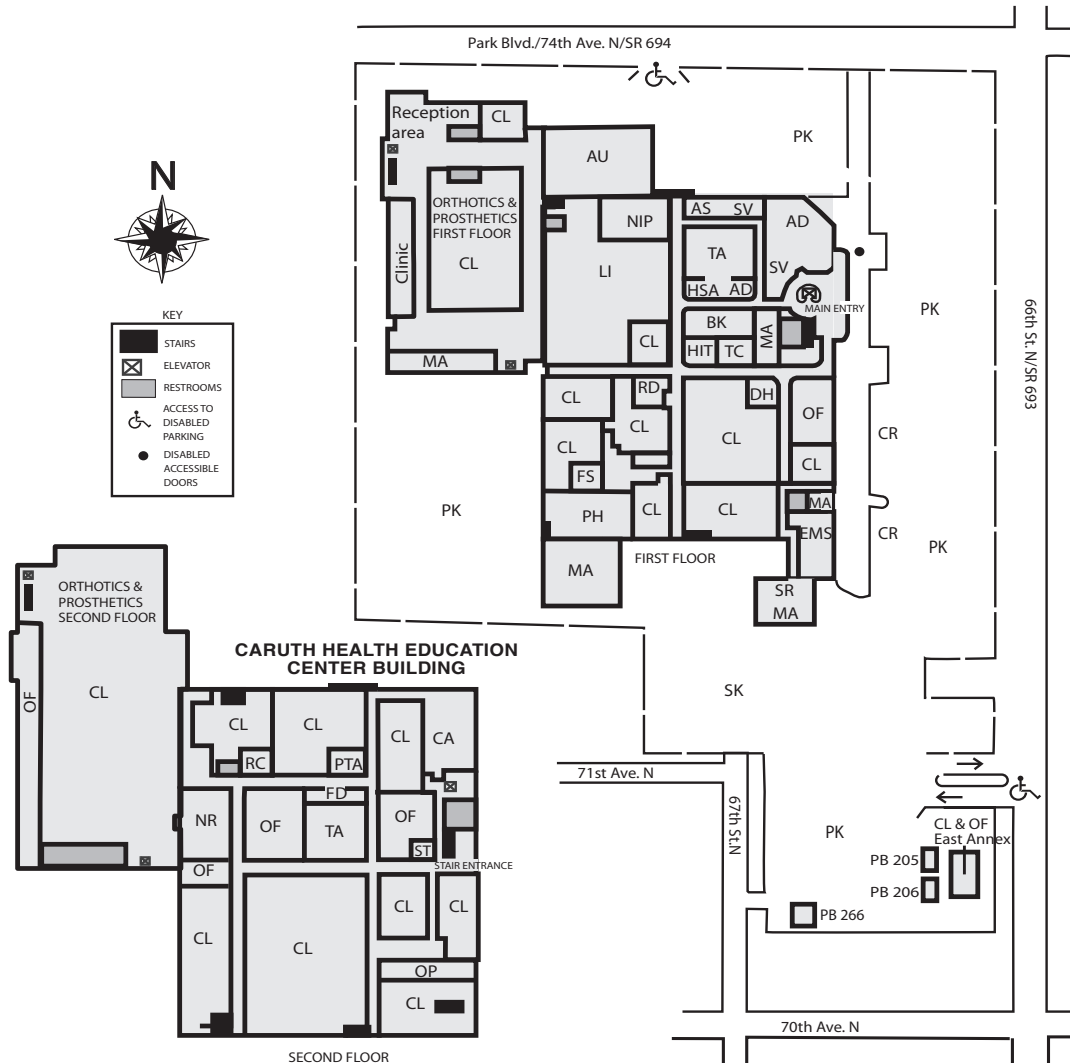
ALLSTATE CENTER

3200 34th St. S.
St. Petersburg, FL 33711



CARUTH HEALTH EDUCATION CENTER

7200 66th St. N.
Pinellas Park, FL 33781



Caruth Health Education Center Room Codes

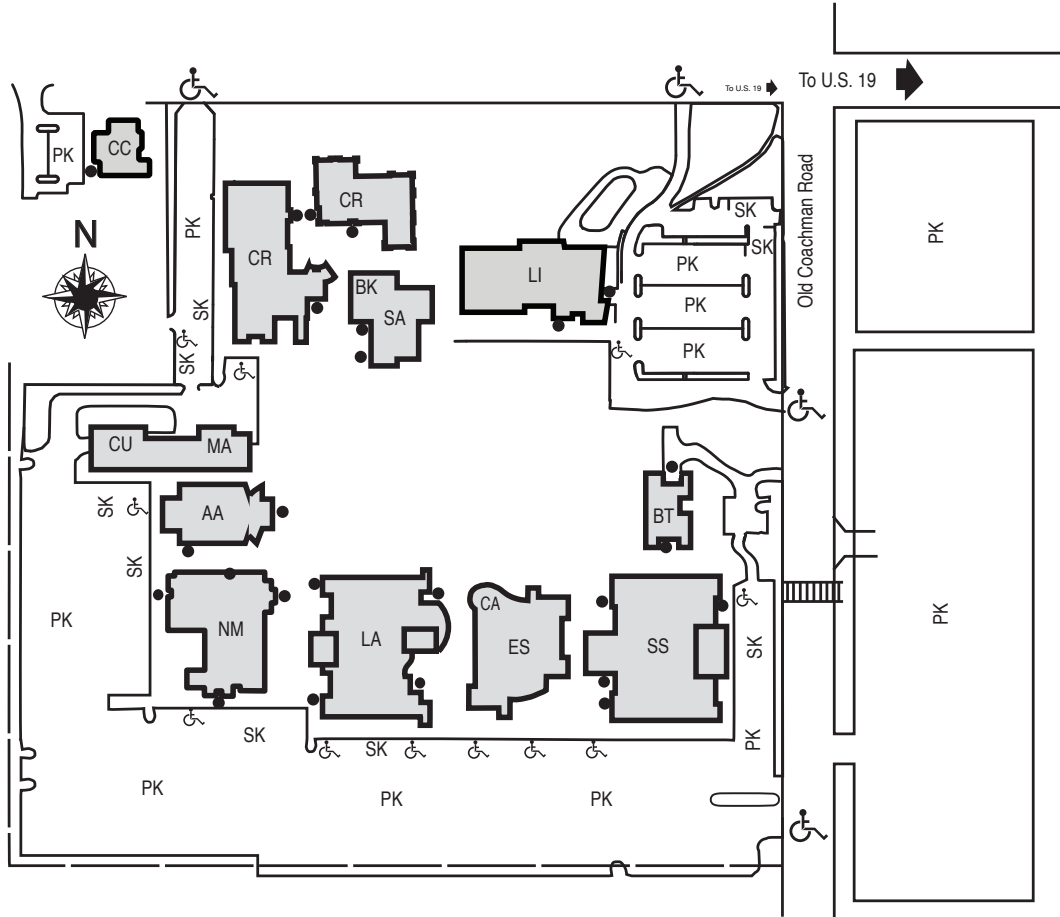
AD - Administration
AS - Accessibility Services
AU - Auditorium
BK - Bookstore
CA - Cafeteria
CL - Classrooms
CR - Clinic Parking
DH - Dental Hygiene
EMS - Emergency Medical Services
FS - Funeral Services
HIT - Health Information Technology
HSA - Health Services Administration

- LI - Library
- MA - Maintenance
- NIP - New Initiative Program
- NR - Nursing
- OF - Offices
- TC - Testing Center
- PB - Portables 205,206 & 266
- PH - Physical Plant/Receiving
- PK - Student parking
- PTA - Physical Therapist Assistant
- RC - Respiratory Therapy
- RD - Radiography

SK - Staff parking
ST - Student Life and Leadership
SV - Student Services
TA - Teaching Auditorium

CLEARWATER CAMPUS

2465 Drew St.
Clearwater, FL 33765



CLEARWATER CAMPUS BUILDING CODES

- | | | |
|---|---|--|
| AA - Arts Auditorium | LA - Language Arts | PK - Student parking |
| BK - Bookstore | • Adaptive Technology | SS - Social Sciences |
| BT - Business Technologies | • Admissions | • Titans Care Center |
| CA - Cafe/Food services | • Advising | • Accessibility Services |
| CR - Crossroads | • Business Office | • Educational Opportunity Center (EOC) |
| CC - Collaborative Center for Emerging Technologies | • Communication | • FAAME/Power Network |
| CU - Central Utilities | • Financial Assistance Services | • Student Life and Leadership |
| ES - Ethics | • Testing Services | • Student Support Services |
| • Social Sciences | • Titans UP! | • Veteran's Services |
| • College of Computer & Information Technology | LI - Michael M. Bennett Library | • We're on the Way (WOW) |
| | • Career Development | SK - Staff parking |
| | • Learning Support Commons | SA - Student Activities |
| | • Provost Office | • Athletics |
| | • Associate Provost Office | • Wellness Center |
| | MA - Maintenance | |
| | NM - Natural Science, Math and College of Education | |
| | • Tampa Bay-Bridges to Bachelorette | |



DOWNTOWN CENTER

244 Second Ave. N.
St. Petersburg, FL 33712



SPC Downtown Room Codes

Classrooms

DC 122-127 - Classrooms
DC 224 - Classroom
DC 226, 230 - Classrooms
DC 251 - Classroom
DC 253 - Classroom
DC 255 - Classroom
DC 257 - Classroom
DC 316-317 - Classrooms
DC 350, 354, 356 & 358 - Classrooms
DC 463, 458 - Science Prep
DC 459, 462 - Science Labs
DC 460-461 - Classrooms

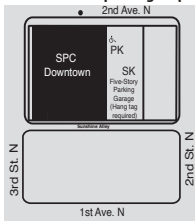
Numbered rooms

DC 109 - Learning Center
DC 115 - Lactation Room
DC 140 - Facilities Receiving
DC 159 - Conference Room
DC 210 - Community room
DC 223 - Student Lounge
DC 225 - Student Life & Leadership, Student Government, Outreach
DC 240 - Science Prep
DC 244 - Science Lab
DC 255 - Collaborative Lab
DC 259 - Center for Civic Learning and Community Engagement
DC 319 - Offices
Suite 332 - American Stage offices
DC 352 - Offices
DC 421 - Florida Orchestra offices
DC 449 - Staff Wellness Center
DC 456-458 - Offices
DC 467-473 - Faculty offices

Un-numbered rooms

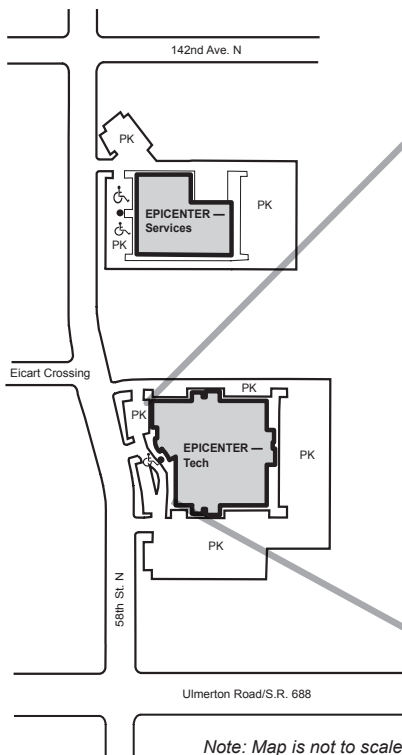
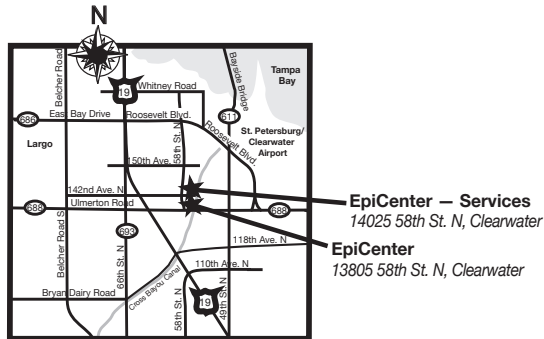
AS - American Stage offices
BX - Box office
DP - Downtown Partnership offices
CM - Copy machine
FS - Food service (cafe)
PK - Student parking
PO - Provost Office
RR - Restroom
SK - Staff parking
SS - Student Services: Admissions, Advising, Business Office, Career Services, Accessibility Services, Financial Aid, Registration
ST - Storage
TC - Testing Center
VN - Vending

SPC Downtown parking map



EPICENTER

13805 58th St. N.
Clearwater, FL 33760

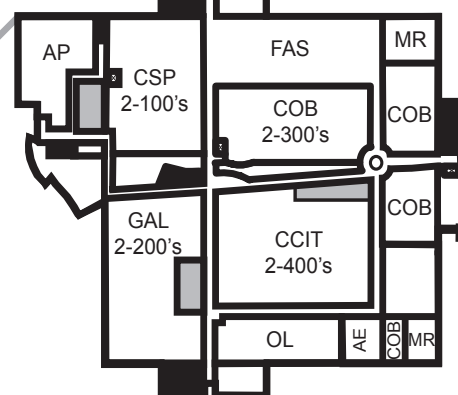


EpiCenter Room Codes

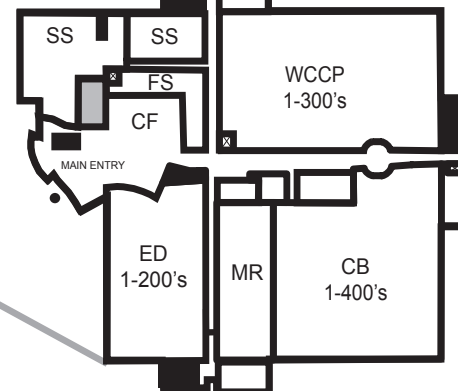
AE - Academic Effectiveness and Assessment
AP - Academic Programs
ASA - Academic & Student Affairs
BP - Baccalaureate Programs
CB - Collaborative Labs
CCIT - College of Computer and Information Technology
CF - Cafeteria
COB - College of Business
CSP - CareerSource Pinellas (formerly WorkNet Pinellas)

ED - Pinellas County Economic Development
FAS - Financial Assistance Services
FS - Food service
GAL - Guardian ad Litem
MR - Meeting rooms
OL - Online Learning
SS - Student Services
UPC - University Partnership Center
WCCP - Workforce, Community and Corporate Partnerships

Second Floor



First Floor



DOUGLAS L. JAMERSON, JR. MIDTOWN CENTER

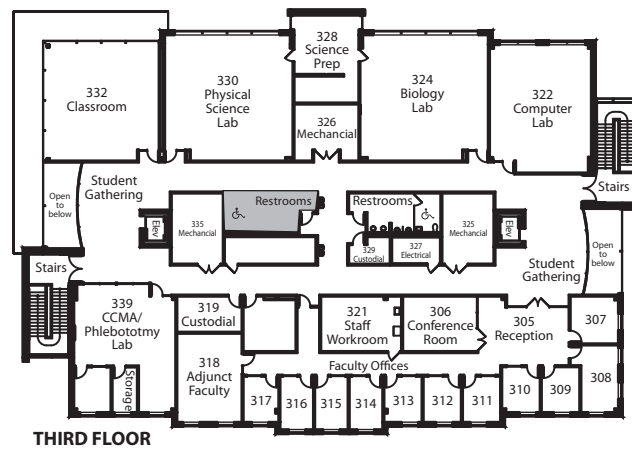
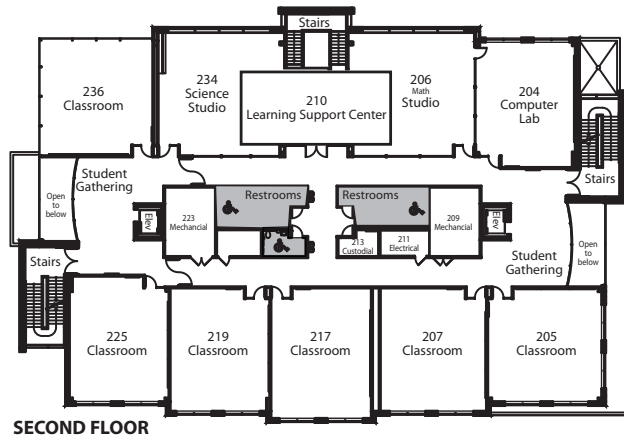
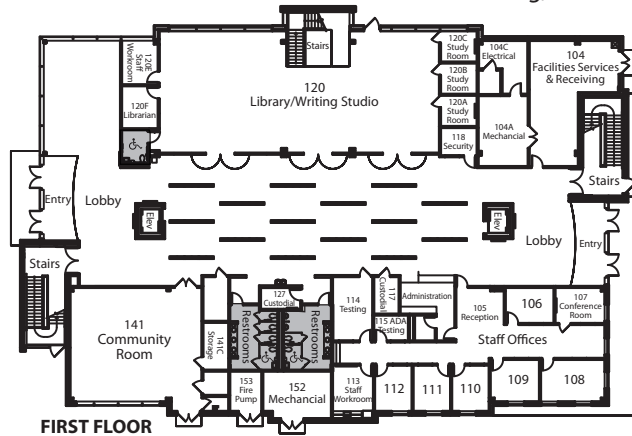
1300 22nd St. S.
St. Petersburg, FL 33712

SPC Midtown Room Codes

MT 104 - Facilities Services & Receiving
MT 105 - Reception
MT 106, 108-112 - Staff Offices
MT 107 - Conference Room
MT 113 - Staff Workroom
MT 114 - Testing
MT 115 - ADA Testing
MT 118 - Security
MT 120 - Library/Writing Studio
MT 120A - Study Room
MT 120B - Study Room
MT 120C - Study Room
MT 141 - Community Room
MT 150 - Dueces Den and Student Life Workroom

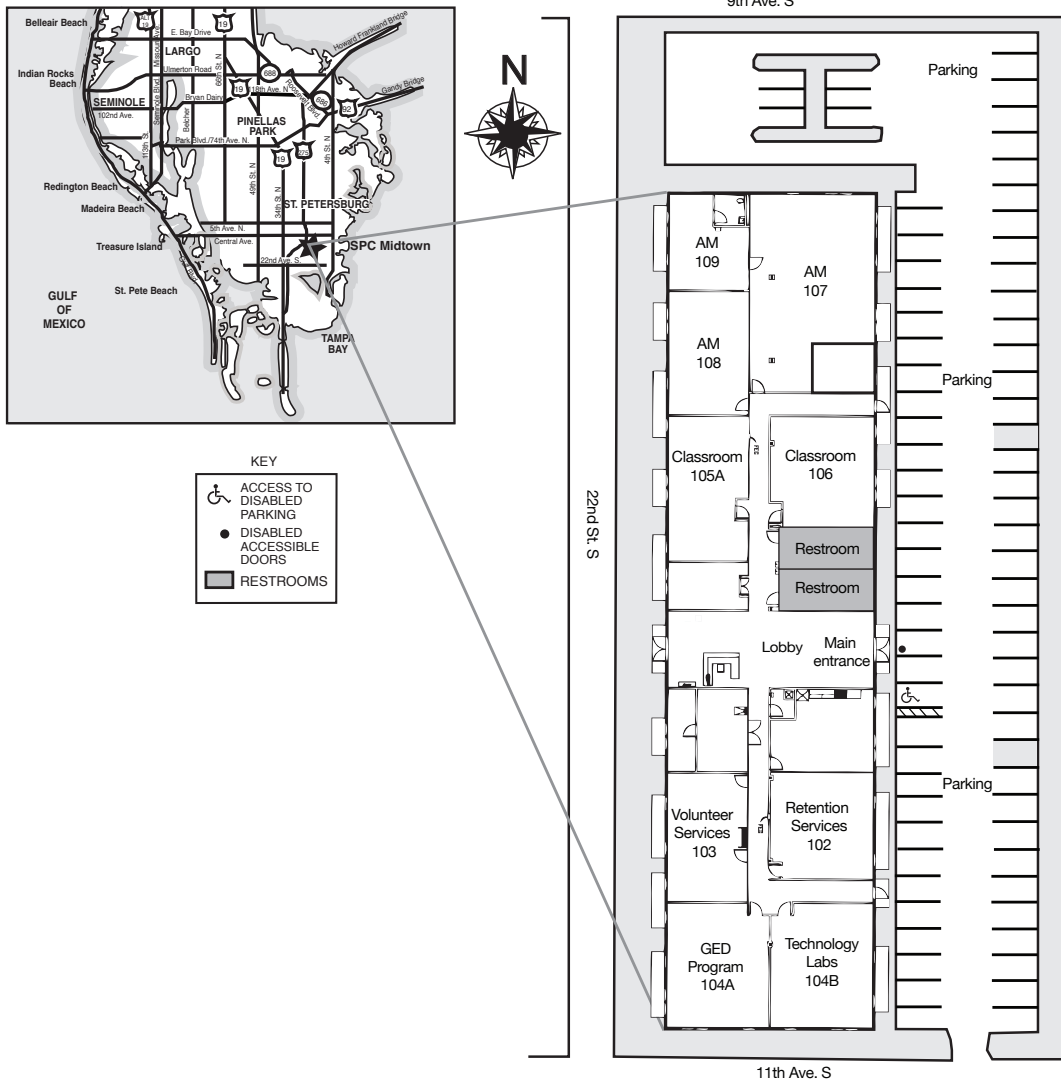
MT 204 - Computer Lab
MT 205 - Classroom
MT 206 - Math Studio
MT 207 - Classroom
MT 210 - Learning Support Center
MT 217 - Classroom
MT 219 - Classroom
MT 225 - Classroom
MT 234 - Science Studio
MT 236 - Classroom

MT 305 - Reception
MT 306 - Conference Room
MT 307-317 - Faculty Offices
MT 318 - Adjunct Faculty
MT 321 - Staff Workroom
MT 322 - Computer Lab
MT 324 - Biology Lab
MT 328 - Science Prep
MT 330 - Physical Science Lab
MT 332 - Classroom
MT 339 - CCMA/Phlebotomy Lab



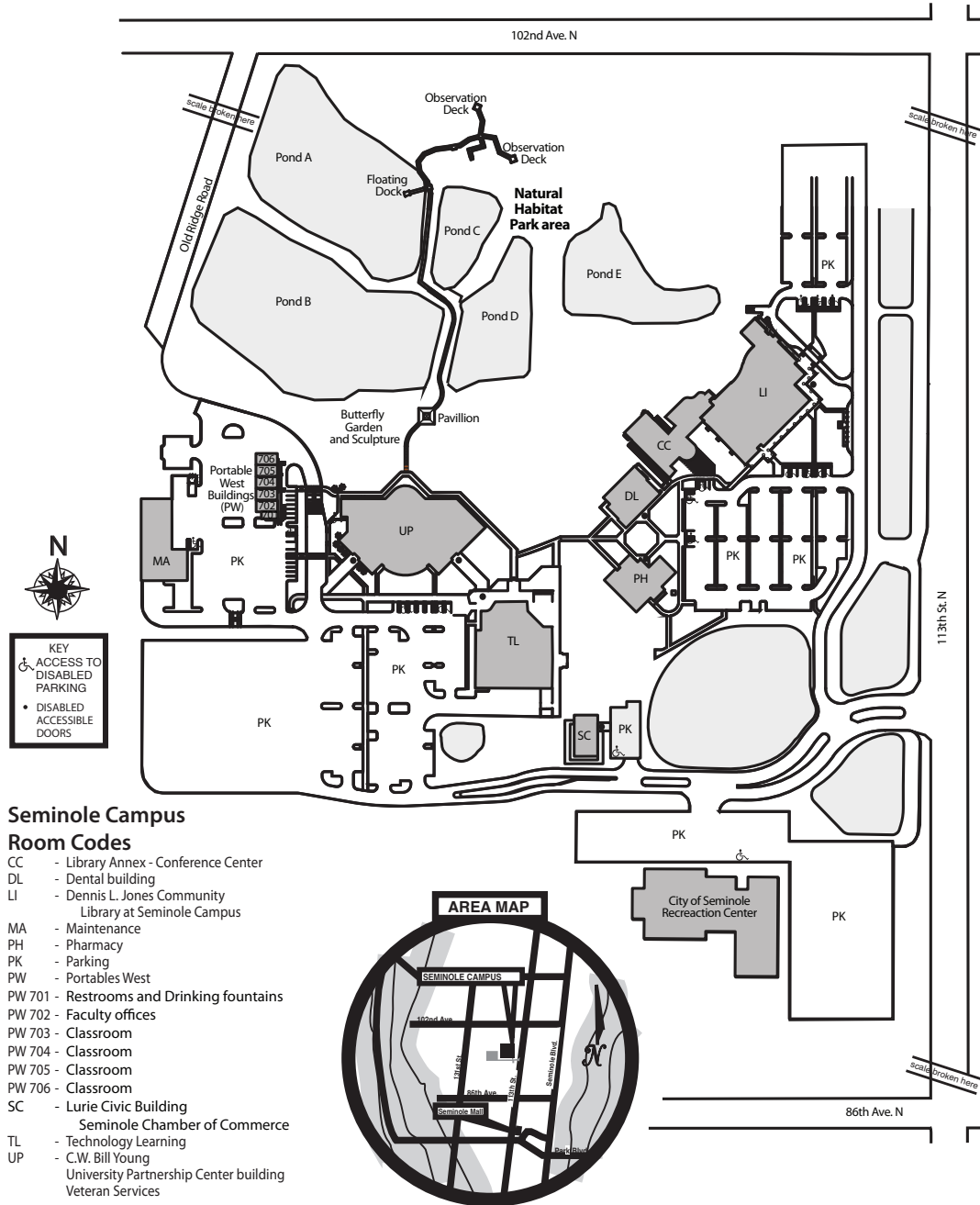
CECIL B. KEENE, SR. STUDENT ACHIEVEMENT CENTER

1048 22nd St. S.
St. Petersburg, FL 33712



SEMINOLE CAMPUS

9200 113th St. N.
Seminole, FL 33772

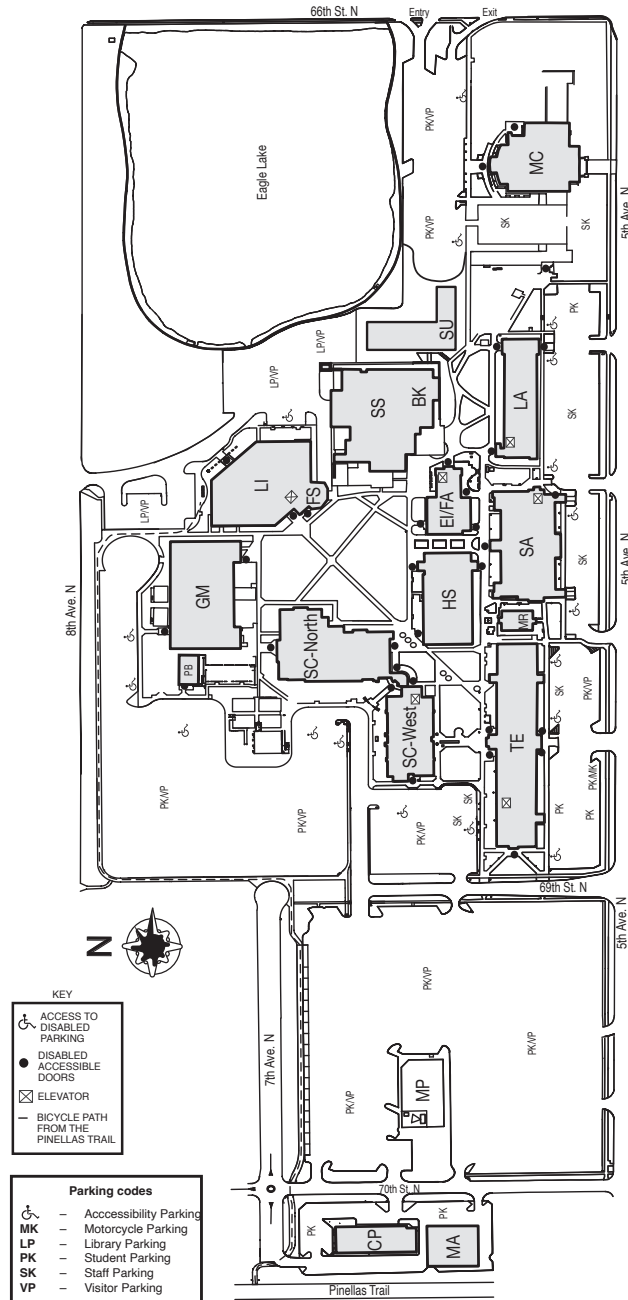


ST. PETERSBURG/GIBBS CAMPUS

6605 Fifth Ave. N.
St. Petersburg, FL 33710

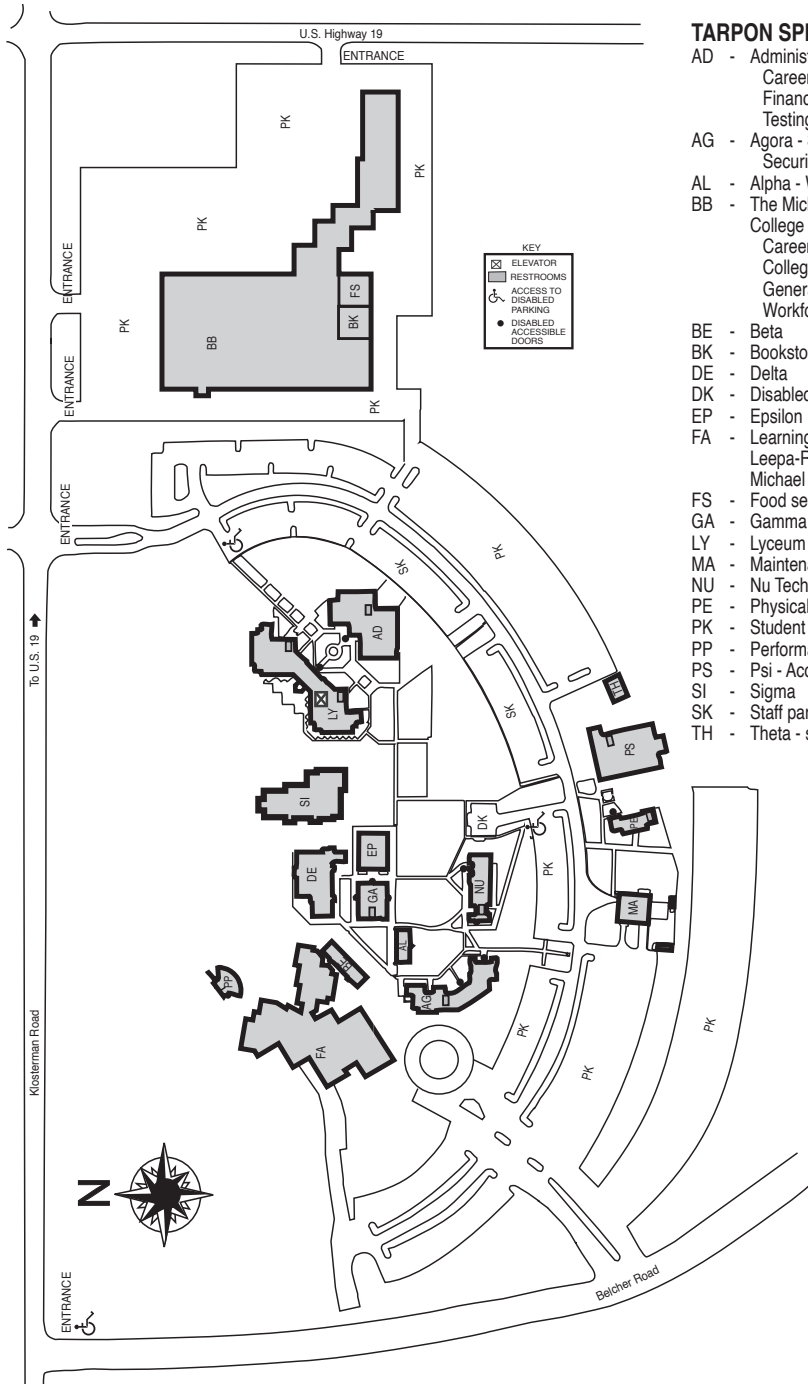
ST. PETERSBURG/GIBBS CAMPUS BUILDING CODES

- EI - ETHICS**
Applied Ethics
Music
- GM - GYMNASIUM**
- HS - HUMANITIES**
Humanities and Fine Arts
- LA - LANGUAGE ARTS**
Communications
- LI - LIBRARY**
Library
Nature's Table Café
Writing Studio
- MA - MAINTENANCE**
Facilities/Receiving
- MC - MUSIC CENTER**
- MR - MIRA**
Music Industry/Recording Arts Studio
- PB - PORTABLE 201**
GED Program
- SA - SOCIAL ARTS**
Mathematics
Social and Behavioral Science
Titan Care Center
 - Assistive Technology Lab
 - Power Network
 - CCAMPIS - Child Care Access Means Parents in School
 - COE - Centers of Excellence
 - CROP - College Reach-Out Program
 - EOC - Education Opportunity Centers
 - FAAME
 - Food Pantry
 - PITCH Program
 - RISE Program
 - SAP (Student Assistance Program)
 - Social and Behavioral Science
 - Student Mental Health and Wellness
 - Student Support Services (SSS)
 - Technology Lending Library
 - Student Lounge
- SC - NATURAL SCIENCE**
Criminal Justice
Planetarium
Science
- SS - STUDENT SERVICES**
Bookstore
St. Petersburg Collegiate High School
Student Life and Leadership
Student Lounge
- SU - STUDENT SUCCESS CENTER**
 - Level 1**
Accessibility Services
Advising and Registration
Business Office
Career Hub
Dó Co Café
Financial Aid
Security
Testing
 - Level 2**
Conference Center
Learning Resources & Tutoring
We're on the Way (WOW)
 - Level 3**
Center for International Programs
Learning Lab
Provost and Associate Provost
Veteran Services
- TE - TECHNICAL BUILDING**
College of Business
College of Computer and Information Technology
College of Education
Recruitment Services
Technical Support and Services/Geek Squad
Wellness Center



TARPON SPRINGS CAMPUS

600 E. Klosterman Rd.
Tarpon Springs, FL 33774



TARPON SPRINGS BUILDING CODES

- AD - Administration -
Career & Advising Center
Financial Aid
Testing Center
- AG - Agora - Student Life and Leadership/
Security/Veterans Services
- AL - Alpha - We're on the Way (WOW)
- BB - The Michael and Evelyn Bilirakis
College of Education Building -
CareerSource Pinellas
Collegiate High School
General Educational Development (GED)
Workforce Hub/Career Services
- BE - Beta
- BK - Bookstore/Food services
- DE - Delta
- DK - Disabled Parking ONLY
- EP - Epsilon
- FA - Learning Resource Center
Leepa-Rattner Museum of Art
Michael M. Bennett Library
- FS - Food service
- GA - Gamma
- LY - Lyceum
- MA - Maintenance
- NU - Nu Tech
- PE - Physical Education
- PK - Student parking
- PP - Performance platform
- PS - Psi - Accessibility Services
- SI - Sigma
- SK - Staff parking
- TH - Theta - storage

NOTES

NOTES

TASKS

- ☐ _____
- ☐ _____
- ☐ _____
- ☐ _____
- ☐ _____
- ☐ _____
- ☐ _____
- ☐ _____
- ☐ _____
- ☐ _____
- ☐ _____
- ☐ _____
- ☐ _____
- ☐ _____

DON'T FORGET!

SPC St. Petersburg
College

Academics

Academic Calendar

There are many dates that are important for you to know, such as when classes begin, deadlines for withdrawing, dates of college holidays, and final exam schedules, to name a few. For the most up-to-date information, visit the online Academic Calendar at spcollege.edu/academic-calendar.

Accelerated Credit Options

SPC wants to help you finish your degree. You may bring in up to 45 college credits through your life experience, military training, industry certification, test credit, and approved articulation agreements recognized by the college. However, not all credits may apply to your specific program. Check with your advisor to learn more about each of these options.

Visit spcollege.edu/earn-free-college-credit

Career and Academic Advising

Career and Academic Advisors will help you get started by discussing your career and educational goals and will be available to guide you throughout your entire SPC experience. At SPC, advisors can help you with registration, course planning, degree program exploration, transfer information and more! To find your advisor, visit the Titan Hub. Your advisor will be located on the Academic Profile widget on the Titan Hub dashboard. Here, you can schedule an appointment with your advisor and email them.

Have a quick question? Login to our Virtual Advising Center or walk in on campus for assistance. For more information, visit spcollege.edu/advising.

Computer Labs

Computer labs are available on campuses to meet your academic technology needs. Computers include Microsoft Office and other academic-related software. You must have a valid student ID, and, in most cases, an SPC student username and password to log on to a computer. You should also use a flash drive or cloud-based account to save your work. Find out more about locations and hours at spcollege.edu/computer-labs.

Enrollment Verifications

An enrollment verification is an official document verifying your enrollment status, attendance dates, and good academic standing. You can obtain up-to-date information on your enrollment status and

student loan notices online in the MySPC portal.

You can:

- Download and print enrollment verification certificates for third parties
- Check when deferment notices were sent to your student lenders
- View your enrollment history
- View proofs of enrollment sent on your behalf to student service providers
- Access a list of your student loan holders
- Print good student discount certificates

To access the National Student Clearinghouse:

- Log into your MySPC portal
- Choose My Academic Status
- Select the Enrollment Verification option from the left-hand menu

Excess Hours Advisory Statement

Section 1009.286, Florida Statutes, establishes an "excess hour" surcharge for a student seeking a baccalaureate degree at a state university. It is critical that students, including those entering Florida colleges, are aware of the potential for additional course fees. "Excess hours" are defined as hours that go beyond 120% of the hours required for a baccalaureate degree program. For example, if the length of the program is 120 credit hours, the student may be subject to an excess hour surcharge for any credits attempted beyond 144 credit hours (120% x 120).

All students whose educational plan may include earning a baccalaureate degree should make every effort to enroll in and successfully complete those courses that are required for their intended major on their first attempt. Florida college students intending to transfer to a state university should identify a major or "transfer program" early and be advised of admission requirements for that program, including the approved common prerequisites. Course withdrawals and/or repeats, as well as enrollment in courses nonessential to the intended major, may contribute to a potential excess hours surcharge.

FloridaShines

FloridaShines offers an array of FREE online tools and resources designed to help students succeed in school, earn a college degree, and embark on a rewarding career. Sponsored by the Florida

Department of Education, FloridaShines is also the website where SPC students may apply to be transient students at another Florida public college or university. Visit floridashines.org.

Health Program Tutoring/New Initiative Program (NIP)

The New Initiative Program/Learning Support Center provides free tutoring to pre-health and health education students. Visit spcollege.edu/new-initiative-program.

Honors Program

St. Petersburg College's Honors Program provides an exemplary education and an intellectual learning community that encourages our most talented and motivated students in creative and critical thinking and developing research and leadership skills. Consider enrolling in honors classes if you:

- Are a motivated student with a good academic record (3.5 GPA, score of 120 on the reading and writing sections of college placement test)
- Want to take academically challenging classes with other highly motivated students
- Want an honors distinction on your transcript

Honors scholarships are available for qualified applicants. Visit spcollege.edu/honors-program.

International Programs

The Center for International Programs (CIP) offers students international opportunities around the world, as well as across the college and community.

• Study Abroad

Studying abroad is one of the most important experiences you can have. The experience allows for personal growth by changing perspectives and inviting tolerance for different cultures and peoples. It also provides you with the necessary skills to be competent global citizens in the 21st Century. Travel and earn college credit through numerous study abroad programs available through SPC and other colleges, universities, and organizations. Scholarships are available.

Visit stpe.co/studyabroad.

• International Events

You don't have to get on a plane to experience diverse cultures – they are all around us! CIP offers activities on and off campus that will

transport students to another culture. For on-campus activities, see our International Events Calendar. For off-campus opportunities, see our GoGlocal Calendar!

Think Global; Act Local.

Both of these calendars can be found at spcollege.edu/international-programs.

• Global Citizen Program

The Global Citizen Program (GCP) is designed to provide students with the knowledge, skills, and attitudes of a competent global citizen who is ready to live and work in a diverse world. The GCP includes curricular and extracurricular components that students complete alongside degree programs.

Get an edge up as you prepare to work in a diverse and global workforce! Visit spcollege.edu/international-programs.

• International Student Services

International students bring intellectual and cultural diversity to our campuses. Students from around the world make SPC their home and provide opportunities for students, faculty, and staff to learn varying perspectives in the classroom and beyond. CIP supports international students to help them succeed academically and become integrated into campus life. Visit stpe.co/intstudents.

Learning Plan Tool

SPC offers an online planning tool designed to help you select classes that fulfill your degree requirements. This tool, often referred to as MyLearningPlan, will assist you in staying on track with your academic progress. We encourage you to explore our step-by-step tutorials for more information. Visit stpe.co/videotutorial.

Learning Management System – Canvas

Canvas is the learning management system used at St. Petersburg College to facilitate all online and hybrid/blended courses, as well as web-enhanced face-to-face or Live Online courses. Canvas provides a user-friendly and flexible online environment where students can interact with course materials, communicate with instructors and classmates, and access their coursework from any internet-connected device, including computers, tablets, and mobile devices.

To access Canvas, click **Titans Login** on the top right of the SPC homepage and log in using your SPC email address and password. This will take you to your **Titan Hub** dashboard. From there, you can select the **Canvas** widget or use the **Canvas link** in the left-side menu. Once logged in, your enrolled courses will appear on the **Canvas Dashboard**. A calendar with important college dates and announcements will be displayed in the middle of the page, along with a list of student resources.

Also available in Canvas is the **Student Canvas Training** course. This training is designed to help students navigate Canvas and become familiar with its most commonly used tools. The course consists of five modules, each covering a key topic related to student success and effective use of online learning tools.

Library

Visit your campus library for resources, research and citation assistance, wireless access, study spaces, cloud-based copiers/printers, and technology use. You can check out materials or use any of the services our campus libraries provide by using your student ID. You can also use our online library and Ask A Librarian services to perform research or request assistance at your convenience. Plus, our partnership libraries on the Clearwater, St. Petersburg/Gibbs, and Seminole campuses offer the benefits of a public library and college library, all in one. Visit spcollege.edu/campus-libraries.

Online Classes

SPC offers a robust selection of online college courses and fully online programs. Most SPC programs can be completed 100% online. Online students have access to all student support services and the opportunity to participate in college activities either on-campus or online. Learn more about becoming an online student at spcollege.edu/online.

Residents Outside of Florida and Professional Licensure

St. Petersburg College is approved to offer online and in-person academic programs outside of the state of Florida through its participation in the National Council for State Authorization Reciprocity Agreement (NC-SARA). NC-SARA is a voluntary, regional approach to state oversight of postsecondary distance education. Institutions that

are a member of NC-SARA are authorized to provide online education to students from all SARA states.

St. Petersburg College offers various programs designed to prepare students to sit for licensure in Florida. Licensure in other states may vary. Non-Florida residents should contact the licensing agency in the state they hope to be licensed in to determine whether or not the SPC program will fulfill these requirements, or the academic program of interest who can provide you with their contact information. SPC is unable to determine whether programs meet all requirements in any other state besides Florida.

Any student who feels that a person, institution, state, agency, or other organization or entity operating under the provisions of the SARA Policy Manual has violated the policies set forth in the SARA Policy Manual or of laws, standards or regulations incorporated in the SARA Policy Manual should file a complaint using the **College's Complaint Process**. If the outcome of the College's Complaint Process does not satisfy your need, then within two years of the incident about which the complaint is made, you can appeal the decision through the **Florida State Authorization Reciprocity Agreement** (FL-SARA).

Testing

Taking the College Placement Test (CPT) helps determine the appropriate reading, English, and math courses for you at SPC. This is not a pass/fail test; scores guide you to the right class level for your success. SAT, ACT, and Classic Learning Test (CLT) scores can be used instead of the CPT.

A CPT is required unless you:

- Entered ninth grade in a Florida public school in the 2003-04 school year or later and graduated with a standard high school diploma, or
- Are an active duty member of the U.S. military.

SPC offers free college placement tests (PERT, Accuplacer) for all incoming students. For testing locations, hours, distance testing, and preparation resources, visit spcollege.edu/testing.

Transient Students

At SPC, there are two types of transient students. The first type is an SPC student who wishes to remain degree-seeking at SPC but take a class at another college or university to accelerate degree

ACADEMICS/ACADEMIC POLICIES

completion. The second type is a student who is degree-seeking at another institution but wishes to take one or more classes at SPC. Information on both types of transient students and requirements and procedures for approval can be found at spcollege.edu/transient-students.

Transcripts

Your SPC transcript is the official, permanent academic record that includes the classes you have taken, grades earned for each class, honors, and degrees completed. Official transcripts may be ordered by selecting the "Transcripts" option from the QUICKLINKS on spcollege.edu. Current students may also order official transcripts in MySPC. Visit spcollege.edu/transcripts.

Transferring to SPC

If you attended another college or university and want to attend SPC, you are considered a transfer student. To be admitted to SPC, you must submit your official high school transcript as well as official transcripts from all regionally accredited colleges or universities you have previously attended. If you have earned an AS degree or higher from a regionally accredited institution, the requirement to submit an official high school transcript may be waived. It's very important that SPC receives all of your official transcripts within your first term of admission or re-admission, as it may impact your ability to enroll for subsequent terms. Students enrolled in a degree-seeking program are granted a one-term grace period to submit all official transcripts. Giving your complete educational history to SPC allows you to:

- Receive credit for your previous work
- Avoid repeating courses you already successfully completed elsewhere
- Simplify the registration process
- Save you time and money

Please note that limited-access programs may require receipt of all official transcripts for program admission, regardless of accreditation type.

Tutoring and Classroom Support - Free

The Learning Centers provide free on-site and online tutoring for writing, math, and science courses taught at SPC as well as computer assistance to help with software-enhanced coursework, Canvas navigation, and/or basic computer applications.

Make an appointment with our instructional support team at spcollege.libcal.com for optimal service. In addition, Brainfuse provides supplemental on-demand service during evenings, overnights, and weekends for free through Canvas. All of this support is available whether you are doing well in a class or just need some extra assistance. Visit spcollege.edu/tutoring.

Academic Policies

College Preparatory Courses

If your test scores indicate that some review is needed, you may be required to take college preparatory classes that do not count toward your degree. These courses teach skills in academic fundamentals, so you'll be ready to meet the challenge of college-level course work. Students who need college preparatory courses are required to take a College Success Skills course. Free tutoring also is available in the Learning Centers at each campus. For students who do not have SAT, ACT or Classic Learning Test (CLT) scores, the college offers placement tests (PERT, Accuplacer) free of charge.

If you entered ninth grade in a Florida public school in the 2003-04 school year or later and graduated from a Florida public high school with a standard high school diploma or serve as an active duty member of the United States military, then you have choices regarding college preparatory courses. Depending on your decision, you may choose to quickly complete one to two credit courses that target specific areas for improvement, take free work-at-your-own-pace classes to get ready for college-level math, reading and writing, or enroll directly into college-level classes. Our Advising Centers can provide a quick assessment to help you decide what is right for you.

Common Prerequisites

If you plan to enroll in an upper-division program at SPC or transfer to an upper-division program at a state university in Florida, you will need to complete the state mandated prerequisites required for your major as part of your Associate in Arts (A.A.) degree. This means you will not have to take one set of courses to qualify for admission to one university and another set of courses for another university. Limited-enrollment programs may have GPA requirements, but course requirements will be the same across Florida institutions. You can find the requirements for about 250 university majors and

ACADEMICS POLICIES

track your progress toward completion through the A.A. transfer evaluation tool on the FloridaShines website at floridashines.org.

Academic Appeals

Before lodging a grievance or appeal, you are encouraged to seek an informal resolution with the employee in the department or course faculty directly responsible for the service or department of instruction. If the matter is not resolved during the informal process, you may file a formal grievance or appeal using the appropriate steps provided at spcollege.edu/appeals. When submitting a grievance or appeal, please provide as much information and documentation as possible. For detailed information see Board of Trustees' procedure P6Hx23-4.36 (Student Grievances and Appeals), P6Hx23-4.46 (Program-Based Good Academic Standing, Academic Warning, Probation, Suspension, and Dismissal), and P6Hx23-4.461 (Academic Affairs: Academic Honesty Policies). Visit web.spcollege.edu/botrules for more information.

Academic Honesty Policy

SPC expects you to be honest in all of your academic work. By enrolling at the college, you agree to adhere to high standards of academic honesty and integrity and understand that failure to comply with this pledge may result in academic and disciplinary action, up to and including expulsion from the college. As a member of the college community, you also have an ethical obligation to report violations of the SPC academic honesty policies you may witness. Students must be aware of their course's Generative AI policies within their course syllabus and ensure all use of AI Systems adhere to principles of fairness, transparency, accountability, and privacy. See Board of Trustees' College Procedure P6Hx23-6.9018. Visit spcollege.edu/student-rights.

Academic Standing Policy

Good academic performance and a clear path to the finish are keys to your success at SPC. These policies, which apply to all students, have been put in place to help you stay focused on your goal and get you back on track if you falter. All degree-seeking students enrolled at SPC must adhere to the Academic Standing Policy. Visit spcollege.edu/student-rights.

Course Load

The maximum course load is 18 credit hours in regular Fall and Spring terms and 12 credit hours in the Express and Summer terms. SPC has developed the Credit Hour Commitment Model to help you determine the appropriate course load for each term. For every one credit hour enrolled, 48 hours of time should be committed. This commitment includes both time spent in class as well as time spent completing assignments and preparing for coursework. For example, a 16-week three credit hour class would require 144 total hours of commitment or nine hours for each of those 16 weeks. Classes that meet for less than 16 weeks will require larger weekly time commitments. Please see the table below. You should consider work, family, and other responsibilities when determining the appropriate course load.

Session Type	Credit Hours	Total Hour Commitment	Weekly Commitment
16-week	3	144	9 hours
10-week	3	144	14.4 hours
8-week	3	144	18 hours
5-week	3	144	28.8 hours

Repeat Policy for College Credit Courses

You may repeat a course once for which a grade of "C" or higher has been earned. Retaking the course may be allowed if it is required for: (1) teacher recertification, (2) specifications of a regulatory agency, (3) licensure, (4) program requirements, or (5) it is to replace credit earned through examination, i.e. AP, IB scores. Repeating a course to meet program requirements must be for either the purpose of improving the grade to be considered for admission to a specific program or a significant length of time has elapsed since the course was originally taken and you need to update your knowledge to meet current program requirements. Under this provision, the highest grade earned will be used in computing the average GPA.

You may request to repeat a course following the appropriate steps at spcollege.edu/student-rights. See BOT Procedure P6Hx23-4.15 at web.spcollege.edu/botrules (Sec. I).

When you attempt a course for the third or more time, you will pay the full cost of instruction

ACADEMICS POLICIES/ REGISTRATION

(defined as the out-of-state tuition and fees rate). You may appeal the full cost provision on the basis of extenuating circumstances and on an individual basis related to financial hardship.

You may file an appeal using the appropriate steps provided at spcollege.edu/appeals. Be advised that on the third attempt, students MAY NOT receive a grade of "I," "W," or "X," but must receive the letter grade earned. See BOT Procedure P6Hx23-4.15 on web.spcollege.edu/botrules (Sec. II).

Incomplete Policy

If you are given an incomplete (I) you will have until the end of the next full 16-week term to complete the remaining requirements and receive a permanent grade, or the grade will convert to an "F." This means if you receive an incomplete at the end of Term I, you must complete the remainder of the course work by the end of Term II. The only exception to the time frame is for an "I" granted at the end of Term II. In that instance, you would have until the end of the next 16-week term, which would be Term I of the next academic year.

See BOT Procedure P6Hx23-4.15 at web.spcollege.edu/botrules (Sec. IV).

Voluntary Audit/Withdrawal Policy

You must choose the option to audit a course before the end of the drop/add registration period. You may elect to withdraw voluntarily from a course through the last day to withdraw with a final grade of "W." These dates are listed in the academic calendar on the college's website. If you voluntarily withdraw after the last day to withdraw, you will receive a grade of "WF."

If you are a financial aid recipient and are thinking about dropping classes, please consult an advisor to make sure you understand the academic and financial consequences.

Visit spcollege.edu/student-rights.

Registration

Register for classes 24/7

Registering for classes online has never been easier. It is recommended that you connect with your assigned advisor to ensure that your learning plan is up to date. An approved learning plan will streamline registration and help you choose the right courses for your program.

To register for classes online, log in to MySPC and

follow these steps:

- Check your To-Do List for any holds that may prevent registration.
- Review your financial aid status.
- Check your student email for important information.
- Proceed to register for classes.

Register as early as possible to secure the best schedule. Important registration dates are at spcollege.edu/calendar.

Visit spcollege.edu/academic-calendar for registration dates.

Need Help?

Tuition*

Lower division courses

In-state, per credit hour	\$111.75
Out-of-state, per credit hour.....	\$386.90

Upper division courses

In-state, per credit hour	\$122.70
Out-of-state, per credit hour.....	\$425.79

In addition, an Access fee of \$3 per credit hour will be assessed.

* Tuition and fees are subject to change.

The most recent rates are posted at spcollege.edu/tuition.

Paying your tuition

Paying your tuition is the last step in registration. It is important that you pay your fees by the due date listed on your fee schedule to avoid being dropped from your classes. Log in to MySPC for your due date and payment amount. Select the My Account tile for additional information and payment options.

• Residency for Tuition Purposes

The amount of tuition you pay is based on in-state and out-of-state fees. To be considered for in-state fees, you must submit specific documentation by the first day of classes. Learn more at spcollege.edu/residency. If you have specific questions about residency, contact residencyquestions@spcollege.edu.

• How to pay tuition

You can pay your tuition online or on campus by visiting spcollege.edu/tuition. If you decide to pay online, please use a browser other than Safari, as this browser is not

compatible for online payments.

- **Tuition Payment Plan**
SPC offers an interest-free tuition payment plan that is affordable and convenient. To use this payment plan, you pay a percentage up front and an enrollment fee of \$35-\$45, depending on when you apply. Visit spcollege.edu/payment-plan.
- **Florida PrePaid Tuition Plan**
SPC accepts Florida PrePaid (FPP) college funds. SPC students are no longer required to request that FPP be processed. Please allow one business day after registering for classes for your FPP to be processed and to check your balance due. Visit spcollege.edu/florida-prepaid.
- **Refund Policy**
Review details on SPC's refund policy at spcollege.edu/tuition-refunds.

Financial aid

Get details at spcollege.edu/financial-aid, and read more later in this section.

After You Register (new students)

- **Review your To-Do List**
It is important to log in to MySPC to review items that require your attention. These items are commonly referred to as your "To-Do List" and you will also be able to see any communications that SPC has sent to you. Completing your To-Do List items in a timely manner will expedite your becoming fully degree-seeking and will help determine your eligibility for financial aid.
- **Get your Student ID**
Visit spcollege.edu/student-ID and follow the steps to obtain your ID card online or on campus. Your ID card allows you to check out library materials, attend student events, use computer labs, and use campus wellness centers. You can also enjoy free PSTA bus service with your SPC student ID card.
- **Select your refund preference**
If you are 16 years old as of the first day of classes and enrolled in at least one credit hour, you will receive any refund with BankMobile Disbursements, a technology solution, powered by BMTX, Inc. Visit <https://disbursements.bmtx.com/refundchoices/> for more information.

Student Life/Services

Accessibility Services

Accessibility Services provides reasonable accommodations for students with documented disabilities under Section 504 of the Rehabilitation Act of 1973 and the Americans with Disability Act of 1990. SPC seeks to ensure that admission, academic programs, support services, student activities and campus facilities are accessible by all students who attend the college. To learn more, and for a link to our application, visit www.spcollege.edu/accessibility

Alumni Network

The SPC Alumni Network (SPCAN) is here to support you throughout your college journey and as you transition into your career. Through mentorship programs, networking opportunities, career resources and special events, we connect students with successful SPC graduates who can offer guidance and inspiration. Additionally, SPCAN provides scholarships, professional development workshops, and access to an engaged community of professionals eager to help you succeed. By staying involved with SPC after graduation, you'll continue to benefit from lifelong learning opportunities and a strong network of Blue Titans ready to support you. Stay connected, get involved, and let the SPC Alumni Network help you achieve your goals - now and in the future! Learn more and Join us at <http://stpe.co/studentalumni>

Athletics

SPC has high-quality intercollegiate athletic teams competing for conference, state, and national championships in women's softball, tennis, volleyball and basketball and in men's baseball and basketball. Our teams compete in Region VIII of the National Junior College Athletics Association (NJCAA). For more information, visit athletics.spcollege.edu.

Bulletin Boards

If you have an event you'd like to promote or an item or service you'd like to sell, contact the campus Student Life and Leadership office for approval to post notices on each site's general-interest bulletin boards. The college reserves the right to restrict commercial postings. Visit spcollege.edu/student-life-leadership.

Campus Safety

SPC is dedicated to providing a safe campus environment. If you have concerns about suspicious behavior or an unsafe situation, report it promptly to campus authorities or to collegewide Security at 727-791-2560. In an emergency, call 911 then notify the security office. Visit spcollege.edu/safety-security and spcemergency.com for:

- Emergency numbers
- Safety Tips
- Crime and OSHA reports
- Sexual offender list
- Reporting suspected abuse
- Reporting sexual violence and misconduct
- Emergency Response Guide
- Emergency Management Plan
- Hurricane preparedness
- Parking rules
- Weapons on campus policy

Timely Warnings:

During emergencies on or near the campus, the college may issue a timely warning through the SPC alert program. These alerts may be sent using audio speakers, electronic signage, and text messaging; or a combination of these.

Career Development Services

Career Development Services helps students create a job search strategy, prepare for an interview, discover internship opportunities, develop a resume, and more. Learn about our free career tools, events, and services at spcollege.edu/career-services.

Children on Campus

Other than in an emergency when specifically approved by the campus provost, the provost's designee or a supervisor, employees and students shall not bring children to work or class other than for an occasional quick visit, to drop off a paper, pick up materials, or other similar activities. In no case is a child to be left unattended on the college premises. If there are questions about the policy, contact the provost or associate provost on your campus.

Clubs and Organizations

Student clubs and organizations are a great way to get involved. SPC has a variety of academic clubs, musical ensembles, and special interest clubs. You

can also get involved in your campus Student Government Association.

Visit spcollege.edu/student-life-leadership.

Commencement

Commencement is the event or formal celebration of the degree being earned. It is a time for you to receive well-deserved recognition for your hard work. Graduation ceremonies for the college are held two times a year, at the conclusion of the fall and spring terms. Students who complete graduation requirements in the summer term may participate in either the spring or fall ceremony. Since SPC holds the graduation celebrations prior to degrees being verified, students are considered a candidate for graduation. For question regarding the commencement ceremony and other graduation events, visit spcollege.edu/graduation.

Emergency Preparedness

SPC's Office of Emergency Management is dedicated to ensuring that our students, employees, and visitors are safe. We do this by keeping everyone informed to the best of our abilities. We have multiple ways that we alert our community to issues on the campuses and these include:

- Informacast
- Fire alarms
- Text messages
- Emails
- SPC Homepage
- SPC Social media pages
- SPC Security: 727-791-2560
- SPCemergency.com
- SPC toll-free number: 866-822-3978

To learn more, visit <https://www.spcollege.edu/friends-partners/safety-and-security/emergency-alerts>

Event Calendar

The college offers various events on campus, online, and in the local community throughout the year. Students can attend shows and exhibits at the Palladium Theatre, the Leepa-Rattner Museum of Arts, and productions by our Performing Arts program students. Stay in virtual touch with your campus community and join us for a variety of seminars, workshops, and even trivia nights! Discover more about upcoming events on our

social media sites and Titan Connect app. Visit spcollege.edu/social-media and titanconnect.spcollege.edu.

FAAME

FAAME is an initiative that aims to empower students in their journey to postsecondary degree completion through mentoring, personal and professional development, and academic support. Visit spcollege.edu/faame

Food Services

Nearly every campus has a place to snack between classes. Explore your options at spcollege.edu/food-services.

Graduating From SPC

Graduation refers to the term in which you have officially and successfully completed all of your degree requirements and the degree is recorded on your official transcript. Email notifications will be sent to students who have been identified as eligible for graduation to the student's SPC email account within six weeks after the term begins. At the end of each term, students who meet all graduation requirements will automatically be awarded their degree or certificate. Students are responsible for determining all graduation requirements are complete. Please review your progress by logging in to MySPC and choosing the My Academics tile, then choose Academic Progress in the navigation bar. It is highly recommended that you meet with your Academic Advisor prior to your last semester in order to review your records and ensure all graduation requirements will be met. For further details, visit spcollege.edu/graduation.

Housing

There are no residence halls at SPC. However, there are several apartment complexes near each college site.

Insurance

The college does not provide accident or health insurance for students. Optional student insurance may be obtained from an insurance company at the student's expense. Certain courses require the student to obtain insurance for which a special fee is charged. Visit spcollege.edu/student-insurance.

Internships

Internships are supervised, practical learning experiences in a work setting related to your program of study. Through course assignments and workplace projects, you will apply, connect, and extend academic theory and competencies for the purpose of building professional skills and affiliations. Contact internship staff at 727-341-3019 for more information, or go to the internship website at spcollege.edu/internships

Mental Health and Counseling Program

If you need support, advice, or just a friendly ear, help is only a phone call away. SPC offers this service FREE to SPC students. Visit spcollege.edu/counseling-service

Parking

Parking is free on most SPC campuses, as long as you park in spaces marked and reserved for students. Students are urged to register their vehicle with SPC security at spcollege.edu/parking.

Power Network

The mission of the Power Network program is to provide a highly focused and integrated model of academic, social, career and co-curricular resources that aim to increase the retention, progression and graduation rates of young students at SPC.

Visit spcollege.edu/power-network

PSTA Bus Pass

Through an agreement between PSTA (Pinellas Suncoast Transit Authority) and SPC, students, faculty, and staff can enjoy free bus service through the Universal Pass, or UPASS. Simply show your current student or staff ID when boarding a PSTA bus and you can ride for free.

Visit spcollege.edu/bus-service.

Recreational Activities

SPC sponsors many intramural and recreational activities that provide friendly, organized competition. These include basketball, table tennis, bowling, flag football, volleyball and soccer. Each student is responsible for accident insurance. Stop by the Student Life and Leadership Office for details.

Visit spcollege.edu/student-life-leadership.

Social Media and Titan Connect

Connect with SPC online to keep up with college news, events, and more. You can find all of SPC's social media accounts at spcollege.edu/social-media. Titan Connect is your portal to get involved. Search events, look up student organizations, connect with resources and find out what's happening today! Visit titanconnect.spcollege.edu or download the app by searching for Modern Campus Presence on your mobile device.

SPC Public Safety Department

The SPC Public Safety Department includes security services, emergency management, dispatch, access services, and EHS (environmental, health, safety). The department is responsible for providing a safe learning and working environment for the SPC community. Through security patrols, cameras, electronic access, and emergency notifications, the Department is a proactive partner in campus safety.

Student ID/Library Card

Your student ID card allows you to check out library materials, attend student events, use computer labs, and use campus wellness centers. You can also enjoy free PSTA bus service with your SPC ID card. Visit spcollege.edu/student-ID and follow the steps to obtain your ID card online or on campus.

Student Lounges

Most campuses have a student lounge where students can relax, study, watch TV, play pool, table tennis, and other games.

Student Publications

Explore SPC publications at spcollege.edu/social-media. The official student newspaper of SPC is available at Sandbox.spcollege.edu.

Student Support Services Program

Student Support Services (SSS) is a federally funded grant program under the Department of Education. SSS is a limited access program in which services are provided to first generation and limited-income students. SSS provides services such as tutoring, academic advisement, textbook and laptop lending, scholarships, cultural events, and a list of additional services to ensure retention and graduation. Visit spcollege.edu/ssc.

Technical Support Center

The Technical Support Center is dedicated to providing timely and effective assistance for registration, coursework, email, and general technical issues. Beyond everyday troubleshooting, we offer specialized support for classroom AV systems, conference rooms, and auditorium spaces, ensuring seamless audiovisual technology for lectures, meetings, and events. Our team is available seven days a week from 7 AM to midnight, excluding federal holidays, select college closures, and every Tuesday from 1 PM to 2 PM. Contact us at 727-341-4357 or via email at onlinehelp@spcollege.edu. For information on setting up your SPC account Multi-Factor Authentication and Self-Service Password Management, visit our Technical Support Site at studentsupport.spcollege.edu.

Textbooks

You can purchase or rent new, used, or digital books at bookstores operated on campus and online by Barnes & Noble. You can automatically order your textbooks after registering in MySPC and have them shipped to your home or pick them up at any Barnes & Noble bookstores on campus. If you are receiving financial aid and your aid exceeds your tuition and fee charges, you may purchase books and supplies using our Book Line of Credit, a short-term, interest-free loan at our campus bookstores. Visit spcollege.edu/textbooks.

First Day Book Program Partnership:

First Day is a partnership between SPC, Barnes & Noble and the publishers to bring course materials to students on the first day of class through Canva at a discounted rate. This model is easy and convenient for student use, provides an affordable option, and supports student success by ensuring every student is prepared for the first day of class. Students can opt-out and purchase materials elsewhere if they choose.

Visit spcollege.edu/FirstDayBookProgram.

Titans Care Centers

SPC is here to help you navigate student life and offers assistance in several areas to help you stay safe and healthy. Whether you need community resources, counseling services, food pantries, free bus rides, technology lending, or could benefit from one of our various student support programs, we are here to help.

Visit spcollege.edu/titans-care-resources for more information.

Titan Hub

Stay connected with Titan Hub (Pathify) which can help enhance your college experience at SPC. Install this app on your phone or visit Titan Hub online and unlock resources that can help you on your academic journey and connect you with your campus and the collegewide community. Visit titanhub.spcollege.edu.

Veterans Services

Veterans Services specialists will help ease your transition in starting, continuing or resuming your educational pursuit and offer assistance with Department of Veterans Affairs (VA) educational benefits. Veterans Services Centers provide specialized services to veterans, eligible dependents, active-duty servicepersons and members of the Selected Reserve. Currently, more than 1,500 student veterans have made SPC their choice – with more student veterans joining our ranks every day. Visit spcollege.edu/veterans-services

U.S. Department of Veterans Affairs (VA) Pending Payment Compliance

In accordance with Title 38 US Code 3679 subsection (e), SPC adopts the following additional provisions for any students using U.S. Department of Veterans Affairs (VA) Post 9/11 G.I. Bill® (Ch. 33) or Vocational Rehabilitation & Employment (Ch. 31) benefits, while payment to the institution is pending from the VA. Our policy regarding Title 38 US Code 3679 subsection (e) is as follows: In accordance with Title 38 US Code 3679 subsection (e), SPC will defer tuition 90 days out from the first day of the semester for any GI Bill recipient who has turned in COE/Eligibility Documents. SPC will further move due dates on a case-by-case basis when payment from the VA has been confirmed to be delayed.

During the time in which SPC awaits payments from the VA directly (Chapter 31 and Chapter 33) students will not be assessed late fees, will not be required to secure alternate or additional funding, will not be denied access to resources and will not be prevented from enrollment.

Volunteer

SPC looks forward to welcoming you as an integral part of our volunteer team.

Check out exciting volunteer opportunities at spcollege.edu/volunteer and get involved.

Your time, knowledge, and experience can make a significant difference in the lives of our dedicated students. We appreciate our volunteers' consideration and sincerely value their service.

Wellness Centers

Our wellness centers are equipped with resistance machines, free weights, and various cardiovascular machines such as treadmills, exercise bicycles, and StairMasters. These workout facilities are free of charge and open when they aren't being used by a physical education class.

Visit spcollege.edu/wellness-centers.

We're on the Way (WOW)

Through collaboration and support, We're on the Way (WOW) empowers and inspires students to be resilient in achieving success. The program has been helping students succeed since 1981. WOW, located on SPC's Clearwater, Seminole, and St. Petersburg/Gibbs campuses, serves as a resource and support program designed to meet the educational needs of enrolled students who are seeking to complete a college degree or certification.

Visit spcollege.edu/wow.

Financial Aid

Not sure how to pay for college?

Financial Assistance Services provides guidance on grants, scholarships, student employment, and loans to help pay college expenses. Below is a step-by-step list of all things financial aid – how to apply, receive and keep it. Download a PDF version at spcollege.edu/financial-aid. You can also see up-to-date information on a range of topics, upcoming important dates and announcements or watch instructional videos.

Financial Aid Eligibility

Students must have a high school diploma or GED certificate. To qualify for financial aid, you need to be a degree-seeking student in a financial aid eligible program. Some certificate programs of 16 credit hours or more qualify. Federal financial aid can only apply to the first 30 remedial credit hours attempted. Visit spcollege.edu/financialaideligibility.

FSA ID (Federal Student Aid ID)

An FSA ID is your electronic signature for federal student aid and gives you online access to your U.S. Department of Education records. You must create an FSA ID username and password before beginning to complete the FAFSA. It only takes a few minutes, allows some data to autofill and could prevent processing delays. Visit studentaid.gov.

If you are a dependent student, at least one parent will be a contributor and must create an FSA ID. If your parents filed their tax return as Married Filing Separate, then both parents will need to create a FSA ID. If your parent does not have a social security number, they still must create an FSA ID. If you are married and filed Married Filing Separate, your spouse will be a contributor and must create an FSA ID.

FAFSA (Free Application for Federal Student Aid)

This is your application for financial aid at SPC. SPC's School Code is 001528. Priority consideration is given to students who apply by May 1. The earlier you apply, the more funds you could be eligible to receive. The information you provide determines whether you qualify for federal, state, and college grants; some scholarships; federal work-study and student loans. Visit studentaid.gov.

Apply for funds you don't have to repay

Scholarships require completion of applications from scholarship donors. Completion of the FAFSA is recommended for scholarships that are awarded based on need. Don't let a letter of recommendation or essay requirement stop you.

Visit spcollege.edu/scholarships.

Student employment positions are available at all campus sites and off-campus all year round. Apply early for limited positions in Federal Work Study, America Reads, America Counts, or as a Student Assistant.

Visit spcollege.edu/studentemployment.

Check your Financial Aid Status and MySPC student email regularly

Log in to **Titan Hub** and then select MySPC. Use your SPC email and password to log in. If you are unable to log in, contact the Help Desk at 727-341-4357.

Two to three business days after you submit the FAFSA, review your **Action Items** to see requested documents, if any. Respond to all requests in a timely manner. Most documents can be submitted online. **Do not submit original documents unless you are requested to do so.** If you are asked to submit tax documents, you may get **official IRS Transcripts** from irs.gov. **Your file will not be complete until all requested documentation is received and processed by our office.**

ALL OFFICIAL COMMUNICATIONS ARE SENT TO YOUR MySPC STUDENT EMAIL.

This is not the same as your Canvas email account. You may choose to forward your MySPC student email to your personal email. It is also your responsibility to keep your home mailing address and phone number current on the Personal Information tab.

Calculating your Financial Aid Award Package

Only classes that are within your current degree program are considered when determining your federal aid package. Federal and other types of financial aid are based on financial need. Using the data collected on the FAFSA, financial need is calculated as follows:

Cost of Attendance less Student Aid Index = Financial Need

We use this formula and individual fund requirements to determine your financial aid awards. All financial aid, excluding loans, is accepted on your behalf.

You must report all offers of financial aid not previously reported such as federal and state grants, scholarships, waivers, fellowships, assistantships, certain Veteran benefits, Americorps, Federal Work Study, loan, and any other educational benefits paid to cover expenses because of enrollment or any changes to your financial situation to Financial Assistance Services. In addition, post-enrollment awards, graduation awards, athletic grant-in-aid funds, books, travel expenses and per diem, stipends, gift cards, prizes, etc. must be included as part of a student's financial aid package.

Financial aid award packages are projected at full-time enrollment and will be adjusted based on actual enrollment. If you change your class schedule, the amounts and types of financial aid awards are subject to change. Visit spcollege.edu/financial-aid-award-package.

If you attend less than full-time during any term, your Cost of Attendance and financial aid award amounts will be adjusted. This could result in a reduction or removal of loans or other financial aid. Visit spcollege.edu/reduction-or-removal-of-financial-aid.

Determine if student loans are necessary

REMEMBER: Student loans must be repaid!! Don't borrow student loans if you don't have to. If you need to borrow, borrow only what you need. To qualify for student loans, you must be enrolled in at least six credit hours required for your current degree program. Log in to **Titan Hub** and then select MySPC to review your awards and decline, reduce or accept the loans offered to you. This step must be completed before your loan will be applied toward your student account. If you are a first-time student loan borrower, you must complete Loan Entrance Counseling and a Master Promissory Note. Stay in contact with your student loan servicer to stay on top of what you owe and remember that on-time repayment will help you establish a good credit rating. Visit spcollege.edu/loans.

Book Line of Credit (BLOC)

If your financial aid exceeds your tuition and fee charges, you may charge up to \$800 in books, course materials, supplies, and equipment at campus bookstores. The amount of your BLOC is based on projected financial aid that will be

refunded at the end of the third week of your classes. The bookstore will have your information on file and will apply your available BLOC charges against your student account.

Visit spcollege.edu/book-line-of-credit.

First Day Book Program

The First Day Book Program brings course materials to students on the first day of class at a discounted rate. To use the program, log in to Canvas, select the course materials and follow the steps to access your eBook and labs. SPC will apply your First Day Book Program charges to your student account. You can opt out and purchase materials elsewhere if you choose. The opt out deadline is one week after the first day of class. If you opt out, you are responsible for purchasing the materials for the class. Visit spcollege.edu/first-day-book-program.

Receiving Funds

You begin receiving financial aid refunds at the end of the third week of classes of the earliest session in which you are enrolled. If you are enrolled only in Express Session or Second 8 Week Session, your financial aid will be refunded at the end of the third week of that session. It is your responsibility to understand the attendance policies of all classes in which you are enrolled.

Visit spcollege.edu/receiving-financial-aid.

Student Employment Pay

Student employees will receive their paychecks bi-weekly through the mail or directly deposited into their bank accounts.

Visit spcollege.edu/student-employment.

Tuition and Fees

If you are considered an out-of-state student, you may submit documentation to be reviewed for in-state tuition charges.

Visit spcollege.edu/residency.

If you do not drop a class before the Last Date to Drop with a Refund, you will owe the college tuition and fees for that class. Visit spcollege.edu/last-date-to-drop-with-a-refund.

SPC deducts tuition, fees, the Book Line of Credit and the First Day Book Program charges from your financial aid award amount. If your award amount is less than the cost of tuition, fees, the Book Line of Credit and the First Day Book Program, you must

pay the difference by the tuition due date.

Any Federal, State, institutional or external source of financial aid, as well as any student fee refunds, will be applied to any outstanding balance on my account, including past-due balances, bookstore charges and other financial obligations, in accordance with the rules of those funds.

Visit spcollege.edu/receiving-financial-aid.

Disbursements and Refunds

Disbursements occur when SPC receives federal, state, or other funds on your behalf. These funds are disbursed to your student account to cover your tuition, fees, the Book Line of Credit and First Day Book Program charges.

Loan disbursements – If your loan is for fall and spring, it will be disbursed in two payments, one half during the third week of your fall enrollment and one half during the third week of your spring enrollment. If your loan is for one term only, the entire loan will be disbursed in one payment during the third week of your enrollment for that term.

Refunds occur when the amount of the disbursements received on your behalf is greater than, or in excess of, the amount owed for tuition, fees, the Book Line of Credit and First Day Book Program charges. If a charge is added to your student account after your refund has been released, you will be responsible for paying the balance.

Visit spcollege.edu/financial-aid-refunds.

BankMobile Disbursements

Excess funds are refunded to the refund option choice you make with BankMobile Disbursements, a technology solution, powered by BMTX, Inc.

Visit <https://disbursements.bmtx.com/refundchoices/>.

Satisfactory Academic Progress

Financial aid recipients must be moving through their current academic degree or certificate program at a reasonable rate and be making progress toward their degree to continue receiving aid. Your Completion Ratio and Maximum Time Frame are calculated to determine a "reasonable rate." Your Minimum Cumulative Financial Aid Program GPA is calculated to determine "making progress."

Visit spcollege.edu/sap.

Withdrawing

Withdrawing from a class or all of your classes can have serious financial and academic consequences.

Make sure you understand the consequences of this decision. If you receive federal financial aid, withdrawing from all classes may require repayment of unearned funds. It can affect your Satisfactory Academic Progress status and future enrollment. In addition, eligibility for future financial aid can be affected, regardless of which school you attend. The date you withdraw from a class is also a factor in determining your grade for that class. Before making changes to your enrollment, speak with a Financial Aid Counselor or an Academic Advisor to understand the impact of your decision. If you have a balance due from dropping or withdrawing from a class or classes or withdrawing from all classes, you must pay that balance. You may be sent to collections for failure to repay.

Visit spcollege.edu/withdrawals.

It's MY FUTURE!

SPC provides a FREE, easy-to-use loan management and planning tool, **IonTuition™**. Activate your account through MySPC to get immediate access to a personalized profile of your federal student loan and grant information. See your loan status, balance, payment amount, due date, interest information, and servicer contacts. You can elect to receive loan status notifications via email or text. A live chat option is available.

IonTuition™ is also available to help with any questions regarding repayment of your student loans. Talk with an experienced counselor about repayment and postponement options at 855-693-4932. If you receive a call from IonTuition™, they are calling on behalf of SPC.

Visit spcollege.edu/itsmyfuture.

CONTACT US

Financial Assistance Services is here to help! Ask questions using the most convenient method for you. Go to spcollege.edu/askfas and choose from:

- PHONE – Call 727-791-2485
- PETE – Go to any financial aid webpage and ask our virtual assistant a question 24/7/365
- ONLINE – Submit your question using the link in the "Online" tab
- VIRTUAL – Speak with a live SPC financial aid counselor in the "Virtual" tab
- ON CAMPUS – Find campus hours and locations in the "On Campus" tab

The most up-to-date student and academic information is available on the college website, spcollege.edu. Access important information about Board of Trustees Rules and College Procedures, students' rights and responsibilities, as well as student privacy and other policies and procedures at web.spcollege.edu/botrules.

Student Right-to-Know

Visit spcollege.edu/student-rights for more information on the following topics:

- Compliance and Policy Information for SPC
- Board of Trustees Rules and Procedures Site
- Download Student Handbook

You can also find more information on the following topics:

Academic Policies

- Academic Calendar
- Academic Honesty Policies, Honor Code
- Academic Integrity Policies and Procedures
- Academic Standing Policy
- Accreditation
- Articulation Agreements
- Attendance
- Auditing Classes Procedure
- College Catalog
- College of Education 2020-21 Title II EPI Report
- College of Education 2020-21 Title II ITP Report
- Course Repeat Procedure
- Current degree programs – Degrees + Training
- Current degree programs – Program Explorer
- Disciplinary Procedure
- Drop with a Refund
- Faculty and Instructional Personnel
- Faculty Resources
- Family Educational Rights and Privacy Act (FERPA)
- Florida Virtual Campus
- General Educational Development (GED)
- General Education Requirements
- Grading System
- Health and Safety Exemption Requirement
- Health Program Admissions
- Incomplete Grades Procedure
- Online Services
- Professional Licensure Disclosure
- Residents Outside of Florida and Professional Licensure
- Student Code of Conduct

- Student Ombudsman Office
- Student Organization Procedure
- Transfer of Credit Procedure
- Withdrawal
- Warning, Probation, Suspension and Dismissal Procedure

Admissions

- Academic Programs
- Admission
- Admission Application
- Compensation for Recruiters and Admissions Staff
- Future Titans
- Program Admission Requirements
- Readmission
- Transfer Credit

Classes, Course Schedules and Syllabi

- View Classes
- View Syllabi

Disputes and Appeals

- Complaints
- Contact SPC
- Discrimination Policy and Information
- Equal Opportunity/Equal Access
- Grievances and Appeals
- Student Ombudsman Office

Financial

- Have a financial aid question? Ask PETE, our chatbot, or ask online, virtually, on campus or by phone
- Available Financial Aid
- Apply for Financial Aid
- Avoiding Student Aid Scams - what to watch for and how to report them
- BankMobile Disbursements
- Calculating Your Financial Aid Award Package
- Campus Based Policy
- Cohert Default Rate
- Contact SPC
- Cost of Attendance

- Degrees and Training
- Dependency Overrides
- Direct Loan (Federal Direct Student Loan) Model Disclosure Form
- Federal Pell Grant
- Financial Aid Contacts
- Financial Aid Eligibility Requirements
- Financial Aid Refunds
- Grant Assistance From Your Home State
- It's MY FUTURE! Financial Literacy Program
- Last Day To Drop With A Refund (Drop/Add Policy)
- Net Price Calculator
- Private Student Loans
- Professional Judgement (includes Dependency Override)
- Refund Policy
- Return to Title IV Policy
- Rights and Responsibilities of Financial Aid Recipients (known as SPC as Conditions of Financial Assistance)
- Satisfactory Academic Progress (SAP)
- SPC Cares
- SPC Tuition Refunds
- Student Aid Eligibility Worksheet, select Possessing or Selling Illegal Drugs
- Student Complaints
- Student Grievances and Appeals
- Student Loan Entrance Counseling
- Student Loan Exit Counseling
- Study Abroad Financial Aid Eligibility
- Textbook Affordability per Florida Statute and State Board of Education Rule
- Textbook Information
- Tuition and Fees
- Verification
- Withdrawals (includes Official and Unofficial Withdrawals and Return to Title IV Funds)

Health

- Accessibility Services
- Drug and Alcohol Abuse Prevention
- Hepatitis B
- HIV/Aids Education
- Meningococcal Meningitis

- Student Assistance Program
- Tobacco/Smoke Free Campus Procedure (adopted August 2016)
- Vaccination Policy

Safety and Security

- Access to SPC Campuses
- Annual Security Report
- Campus Crime Reports
- Daily Crime Log
- Emergency Response/Evacuation
- Missing Student Notification Policy and Procedure
- Parking
- Reporting Abuse of a Minor
- Reporting a Crime/Important Numbers
- Safety Tips
- Sexual Harassment Policies and Information
- Sexual Offenders and Predators List
- Sexual Violence and Misconduct
- Threat Assessment
- Timely Warnings and Emergency Notifications
- Weapons and Firearms on Campus

Statistics

- Bachelor's Degrees
- Employment, Continuing Ed and Annualized Earnings by Year, select AS FETPIP Dashboard
- College Navigator
- Cohort Default Rate
- Facts and Enrollment Statistics
- Florida College Transfer Students Attending Florida Public Universities
- Graduation Rates
- Graduation Rates for Certificate programs
- Graduation Rates for Student Athletes
- Net Price Calculator
- Placement Rates
- Retention Rates
- SPC Fact Book
- State's Economic Security Report
- Student Body Diversity
- University Partnership Center

Other

- College Navigator
- Copyright Regulations
- Compliance Statements
- Constitution Day
- Establishing and Maintaining an Information Security Program
- Information Technology Acceptable Use
- Information Security and Privacy Policy
- Peer-to-Peer File Sharing
- Privacy Policy
- Refund Procedure
- Social Security Number Usage
- Study Abroad
- Third Party Servicers involved in Marketing, Recruitment and Admissions and the Administration of Title IV Financial Aid
- Voter Registration

Appeals Process

SPC values due process and fundamental fairness in its policies and procedures. Students may appeal certain determinations made and actions taken by the college according to the **Board of Trustees Student Grievances and Appeals Procedure** P6Hx23-4.36 located at spcollege.edu/BOTrules. An appeal is a formal request asking for a change in a determination made or actions taken by the college; when submitting a grievance or appeal, please provide as much information and supporting documentation as possible. For additional information on appeals and to submit an appeal online, visit spcollege.edu/appeals.

Clery Act

The Jeanne Clery Disclosure of Campus Security Policy and Campus Crime Statistics Act is a federal law that requires colleges to disclose information about campus safety and crime. SPC complies with the Clery Act by publishing an Annual Security Report each year, available no later than October 1st. The Report contains important information about security-related policies and crime statistics for each SPC location. Please visit <https://www.spcollege.edu/current-students/student-affairs/student-right-to-know> to learn more about security policies at SPC and to access the current Annual Security Report.

Complaint Policy

SPC is always looking for ways to improve. We are committed to providing prompt and fair resolution of all student concerns and strive to make the process of communicating such concerns as easy as possible. We take these concerns very seriously and the information below outlines this process. Examples of student complaints related to this policy include matters relating to college facilities (services received, facilities, etc.) or other services such as the college bookstore, student services, or campus cafeteria. To make a formal complaint:

1. Access the college's Student Complaint website at spcollege.edu/complaint.
2. Complete and submit the online complaint form. If you are unable to submit an electronic form, a college employee may submit the form on your behalf.
3. Your complaint will be routed to the appropriate department and you will receive confirmation of receipt within 24 hours (not counting days the college is closed) that the complaint has been received.
4. The complaint will be processed and you will be notified of the resolution in writing.

Academic appeals and student grievances are not considered complaints and should be lodged through the formal student grievance/appeal process found in P6Hx23-4.36 located at spcollege.edu/botrules. If you have an academic grievance or appeal, please utilize this process. Students or third parties who have a disability or accessibility related grievance and who are alleging disability discrimination in violation of Section 504 of the Rehabilitation Act of 1973 should follow College Procedure P6Hx23-4.364 for information on informal and formal grievance processes. Visit spcollege.edu/friends-partners/about/compliance-statements/accessibility-servers for more information.

Conduct

SPC students are expected to conduct themselves in a manner that will reflect credit to the college, the community, and themselves. Each student, by registering, assumes the responsibility to become familiar with and abide by the general regulations and rules of conduct outlined at <https://www.spcollege.edu/current-students/student-affairs/student-right-to-know/student-responsibilities>

Controlled Substances, Alcoholic Beverages Abuse, Tobacco, Smoking and Marijuana

Drug-Free Campus and Workplace – Drug and Alcohol Prevention Program

St. Petersburg College ("College") is committed to providing a safe academic and workplace environment in compliance with the provisions of the Federal Drug-Free Schools and Communities Act of 1989 and the Drug-Free Workplace Act of 1988, applicable local, state, and federal laws, rules, and regulations. As a result, under SPC Code of Conduct Procedure P6Hx23-4.33, being under the influence of alcohol, illicit drugs, medical marijuana without a state-issued medical marijuana card, and/or prescription medication without a prescription is prohibited. Possession of alcoholic beverages is prohibited when it violates state and/or federal law or alcohol is present at college sponsored events and the event is not authorized by the College. These actions are prohibited at or on any campus or center of the College, or at any College-sponsored or College-affiliated activity or event. The College's Drug and Alcohol Abuse Prevention Program describes: 1.) The applicable legal sanctions under local, state, or federal law for the unlawful possession or distribution of illicit drugs and alcohol. 2.) The health risks associated with the use of illicit drugs and the abuse of alcohol. 3.) drug or alcohol counseling, treatment, or rehabilitation or reentry programs that are available to employees or student. 4.) The disciplinary sanctions the College may impose. Sanctions for violations may include, in severe cases, suspension and dismissal from the College, as well as criminal penalties related to Florida Statute Chapter 893 and/or any applicable state or federal laws. Visit stpe.co/flstatutech893 for more information. See BOT Procedure P6Hx23-2.02 for a complete description of the College's Drug and Alcohol Abuse Prevention Program.

Tobacco and Smoke Free Policy

SPC is a tobacco and smoke free college. Smoking and/or the use of any tobacco is prohibited in all College facilities and on all College property, without exception, including but not limited to, all buildings and portions of buildings owned or leased by the College, including, without limitation, atria, entry ways and enclosed hallways within buildings. Outdoor areas include, but are not limited to, parking lots, grounds, rooftops, plazas, courtyards, entrance and exit ways, and any other areas of the College campus. See BOT Procedure P6Hx23-1.37, and for more information on tobacco use, see P6Hx23-4.33.

Marijuana and Medical Marijuana

As a recipient of federal funding and to comply with Drug-Free Schools and Communities Act regulations (Education Department General Administrative Regulations-EDGAR Part 86), St. Petersburg College is required to continue to prohibit the use, possession, and distribution of all federally controlled substances, including marijuana. Although state law may permit the use of medical marijuana, federal law prohibits marijuana use or possession. State law does not require the College to accommodate the medical use of marijuana in the classroom, in the workplace, or by individuals attending class or working while under the influence of marijuana. The manufacture, selling, dispensation, possession, use, distribution, or being under the influence of marijuana for medical purposes is not allowed on any College property, at any College-sponsored event, or as part of any College activities for any purpose by employees or students.

Copyright Regulations

SPC supports and encourages its employees and students to develop scholarly and creative works and educational materials and products (intellectual property) which may be subject to copyright, trademark, or patent regulations and which may generate royalty income. Also, ownership in a work prohibits another's copying of the work or distributing copies of the work unless one or more of the following apply:

- the work was never copyrighted
- the copyright in the work has expired
- the work lies in the public domain
- the copying and/or distribution falls within "fair use" privileged under Section 107 of the Copyright Act of 1976
- the copying and/or distribution falls under certain library or archival copying privileged under Section 108 of the Copyright Act of 1976
- the copyright owner has given appropriate permission

The College's rules and procedures are designed to balance, protect, and define the respective rights of St. Petersburg College, its employees and students regarding intellectual property and copyright laws. Refer to Board of Trustees' Rules and Procedures 6Hx23-1.35, P6Hx23-1.35, P6Hx23-1.351

for copyright policies and a description of published and unpublished materials that may be subject to copyright regulations. Visit web.spcollege.edu/botrules for more information.

Discrimination

SPC does not tolerate discrimination in its employment practices or in the admission and treatment of students. All SPC employees and students are responsible to adhere to SPC's Nondiscrimination Policy. Violators are subject to disciplinary action, which may include reprimand, suspension, or dismissal. For information on types of discrimination, College policies, and reporting information, visit spcollege.edu/discrimination.

HIV/AIDS

Information on the Human Immunodeficiency Virus and its prevention can be found at hivinfo.nih.gov.

Reporting Abuse of a Minor

Under Florida Law, all persons have a legal obligation to report suspected instances of child abuse, neglect or abandonment, regardless of whether an alleged perpetrator is the child's parent, legal custodian, caregiver or other person responsible for the child's welfare. Get more information on reporting obligations at the Florida Abuse Hotline (1-800-962-2873) or online via the website Florida Department of Children and Families website.

In addition, Florida college administrators are obligated to timely report, under penalty of law, any knowledge or reasonable suspicion that an abuse, neglect or abandonment of a minor has occurred on college property or during a college sponsored activity, event or function. All students and employees who have knowledge of, or have reasonable cause to suspect, the abuse, neglect or abandonment of a minor on campus must report such knowledge or suspicion to Campus Security (727-791-2560) and to the Campus Provost, and as may be appropriate, to the Florida Abuse Hotline. Remember, if there is an emergency, first dial 911 for emergency assistance, and then Campus Security. Failure to properly report may result in substantial institutional sanctions and employee discipline.

For more information regarding the definitions of abuse and neglect, sanctions for non-compliance, and reporting obligations of college employees, please see the Board of Trustees' College Procedure at P6Hx23-2.014.

Reporting Incidents

There are several ways to report an incident on campus. If the incident is life-threatening or emergency services are needed, call 911 and provide them with a description of the incident, where you are located, and your contact information. If possible, have someone else contact SPC Security Dispatch at 727-791-2560 and report the incident as well.

For non-emergency issues, please call Security Dispatch directly at 727-791-2560, and a security officer will contact you.

Safety in Private Places Act – Restrooms and Changing Facilities Usage

Florida law requires Florida's public colleges to provide restrooms and changing facilities exclusively for males and females, based on biological sex at birth, and unisex restrooms designed for a single occupant or family. St. Petersburg College provides both exclusive male and female designated restrooms and changing facilities, as well as limited numbers of unisex restrooms and changing facilities, in accordance with the law. For more compliance information and possible disciplinary action, refer to College Procedure P6Hx23-6.01

Safety Reports

SPC's Security Department is dedicated to the safety of students, staff, and visitors by providing quality services and information to help make the time that you spend at SPC safe and enjoyable. Visit

spcollege.edu/student-rights

(Safety and Security) for current reports and information on:

- Annual Security Report
- Criminal activity and crime statistics on campus/ neighboring area
- Daily Crime Log
- Emergency Response/Evacuation
- Missing Student Notification Policy and Procedure
- Parking
- Reporting Abuse of a Minor
- Reporting a Crime/Important Numbers
- Safety Tips
- Sexual Harassment Policies and Information
- Sexual Offenders and Predators List
- Sexual Violence and Misconduct

- Threat Assessment
- Timely Warnings and Emergency Notifications
- Weapons and Firearms on Campus

A hard copy of the safety reports will be provided upon request.

Sexual Harassment and Title IX

SPC has a strong commitment to keeping its workplaces and classrooms free from sexual harassment. The responsibility for doing so rests with each member of the college community. For information on types of sexual harassment, frequently asked questions, and reporting contacts, visit spcollege.edu/sexual-harassment.

Sexual Violence and Misconduct and Title IX

SPC is committed to preventing sexual violence (including sexual assault) and sexual harassment on all of its campuses and other facilities. For more information on sexual violence and misconduct on campus, including SPC's policies and procedures, reporting information, what is prohibited, penalties, victim's rights, available resources, and more, visit spcollege.edu/sexual-misconduct.

Student Records

Students and eligible parents and guardians have the rights as afforded by the Family Educational Rights and Privacy Act (FERPA) to:

- Inspect and review education records within 30 days of the day the college receives a request for access
- Request the amendment of a student education record the student believes is inaccurate
- Consent to disclosures of personally identifiable information contained in the student's education records, except to the extent that FERPA authorizes disclosure without consent

- Obtain a copy of the college's policy on student records from the office of the Associate Provost on each campus, center, or site
- Restrict the release of college directory information, which can be done in the "My Information" section of MySPC
- File a complaint concerning any and all alleged failures of a state college to comply with the requirements of FERPA with the Family Policy Compliance Office, U.S. Department of Education, 400 Maryland Avenue SW, Washington, DC 20202-5901

For more information on FERPA, what constitutes directory information, and how to exercise your right to restrict access to it, visit spcollege.edu/student-rights.

Students also have a responsibility to keep the information in their student record up-to-date. Some of these changes (address, phone number, home email) can be done by the student in MySPC under the Profile tab. However, name, date of birth, and social security number changes must be initiated by the student completing a Request for Change of Official SPC Records form and submitting it to the Admissions and Records Department. Forms can be found at spcollege.edu/forms-online.

Service Animals

SPC is committed to providing a learning and work environment that is inclusive of all and welcomes those with service animals on campus and in the classroom, as well as at all college activities and events.

For more information on the use of service animals, please see Board of Trustees Rules and College Procedures 6Hx23-1.251, P6Hx23-1.251, and the Information for Individuals Using Service Animals page at spcollege.edu/service-animals.



St. Petersburg College

SPC



2025-26 STUDENT PLANNER

TASKS

<input type="checkbox"/>	_____
<input type="checkbox"/>	_____
<input type="checkbox"/>	_____
<input type="checkbox"/>	_____
<input type="checkbox"/>	_____
<input type="checkbox"/>	_____
<input type="checkbox"/>	_____
<input type="checkbox"/>	_____
<input type="checkbox"/>	_____
<input type="checkbox"/>	_____
<input type="checkbox"/>	_____
<input type="checkbox"/>	_____
<input type="checkbox"/>	_____
<input type="checkbox"/>	_____

DON'T FORGET!

SPC St. Petersburg
College



SPC is here to help you navigate student life and offers several resources to keep you safe, healthy, and ready to succeed. Visit one of our **Titans Care Centers** to find assistance tailored to your needs.

STUDENT RESOURCES

Community Resources for Life

Check out our list of external resources available for specific issues.

Counseling Services

SPC partners with local and national providers for telemental health and face-to-face services to ensure students have access to whole health and wellness

Food Pantry

Stop by a food pantry on a campus near you for snacks and groceries.

Free Bus Rides

Students can ride Pinellas Suncoast Transit Authority (PSTA) buses for free with a student ID.

Student Support Programs

With programs like We're On The Way, Power Network, Veterans Services, or Student Support Services, students can find support to help ensure their success both in and outside of academic life.

Technology Lending Program

Degree-seeking students in Pinellas County can borrow a laptop for SPC coursework.



Scan the QR code for more info on Titans Care Center programs.



spcollege.edu/titans-care-resources

I  SPCC

ST. PETERSBURG COLLEGE

spcollege.edu