

AGENDA

ST. PETERSBURG COLLEGE BOARD OF TRUSTEES March 15, 2016

EPICENTER MEETING ROOM (1-453)
13805 -58th STREET N.
Largo, FL

I. CALL TO ORDER

- A. Invocation
- B. Pledge of Allegiance

II. PRELIMINARY MATTERS

- A. Presentation of Retirement Resolutions and Motion for Adoption
None
- B. Recognitions/Announcements

- 1. Clearwater Campus Partnership with Helen Gordon Davis Centre for Women – Dr. Stan Vittetoe, Provost

III. COMMENTS

- A. Board Chair
- B. Board Members
- C. President
- D. Public Comment pursuant to §286.0105 FS

IV. REVIEW AND APPROVAL OF MINUTES

Board of Trustees' Meeting of February 16, 2016 (*Action*)

V. MONTHLY REPORTS

- A. Board Attorney
- B. General Counsel – Introduce Mark St. Louis, Associate General Counsel
- C. Foundation Annual Update – Mr. Bill McCloud, Chair; Ms. Frances Neu, Vice President, Institutional Advancement and Executive Director Foundation (*Presentation*)

VI. STRATEGIC FOCUS AND PLANNING

A. STUDENT SUCCESS AND ACHIEVEMENT

- 1. American Association of Community Colleges Pathways – Dr. Anne Cooper, Senior Vice President, Instruction and Academic Programs (*Presentation*)

B. STUDENT SERVICES

1. Tobacco Free Campus – Ms. Jamelle Conner, Provost; Mr. Patrick Chan, Student (*Presentation/Action*)

C. BUDGET AND FINANCE

1. Monthly Financial Report – Ms. Janette Hunt, Acting Budget and Compliance Director (*Presentation*)
2. Budgeted Enrollment Plan 2016-2017 – Dr. Jesse Coraggio, Vice President, Institutional Effectiveness and Academic Services (*Presentation*)

D. ADMINISTRATIVE MATTERS

1. Construction
 - a. Clearwater Library Update – Mr. Jim Waechter, Associate Vice President, Facilities Planning and Institutional Services; Dr. Stan Vittetoe; Provost (*Presentation*)

E. ACADEMIC MATTERS

1. Study Abroad 2016-2017 – Ms. Ramona Kirsch, Director, Primary Designated School Official (*Presentation/Action*)

F. STRATEGIC PRIORITIES

1. Career Preparation and Placement – Dr. Jason Krupp, Director of Workforce Services; Dr. Marvin Bright, Provost, (*Presentation*)

VII. CONSENT AGENDA

A. OLD BUSINESS (**items previously considered but not finalized**)

NONE

B. NEW BUSINESS

1. ACADEMIC MATTERS

- a. Credit Curriculum Changes – Ms. Margaret Bowman, Director, Curriculum Services (*Action*)
- b. Workforce and Professional Development Curriculum Changes – Dr. James Connolly, Director Workforce and Professional Development (*Action*)

2. ADMINISTRATIVE MATTERS

- a. Human Resources
 1. Personnel Report (*Action*)
 - b. Annual Membership Assessment in Florida College System Risk Management Consortium (*Action*)
 - c. Construction Documents Phase III and Guaranteed Maximum Price, Renovation for Center and Academic Advising Center, Seminole Campus (*Action*)
 - d. St. Petersburg Police Department – Lease Agreement (*Action*)
 - e. Land Lease Agreement Between Verizon Personal Communications LP and St. Petersburg College (*Action*)
3. GRANTS/RESTRICTED FUNDS CONTRACTS
 - a. U.S. Department of Education TRIO Talent Search (*Action*)
 - b. CareerSource Florida, Inc. – FloridaFLEX (*Action*)
 4. BIDS, EXPENDITURES, CONTRACTS OVER \$325,000 - NONE
 5. CAPITAL OUTLAY, MAINTENANCE, RENOVATION, AND CONSTRUCTION – NONE

VIII. INFORMATIONAL REPORTS

NONE

IX. PUBLIC ACCESS/UNAGENDAED ITEMS

X. PROPOSED CHANGES TO BOT RULES MANUAL – Public Hearing – (*Action*)

- 6Hx23-1.34 Discrimination Grievance Rule
- 6Hx23-2.01 Equal Employment Opportunity/Affirmative Action
- 6Hx23-2.010 Harassment and Relationships Policy and Definitions (Repealed)

XI. PRESIDENT’S REPORT

- Legislative Update

XII. NEXT MEETING DATE AND SITE

April 19, 2016, Epi Center

XIII. ADJOURNMENT

If any person wishes to appeal a decision made with respect to any matter considered by the Board at its meeting March 15, 2016, he or she will need a record of the proceedings. It is the obligation of such person to ensure a verbatim record of the proceedings is made, §286.0105, Florida Statutes.

Items summarized on the Agenda may not contain full information regarding the matter being considered. Further information regarding these items may be obtained by calling the Board Clerk at (727) 341-3241.

***No packet enclosure**

Date Advertised: February 12, 2016

Confirmation of Publication

[Notice of meeting](#)

St. Petersburg College Foundation

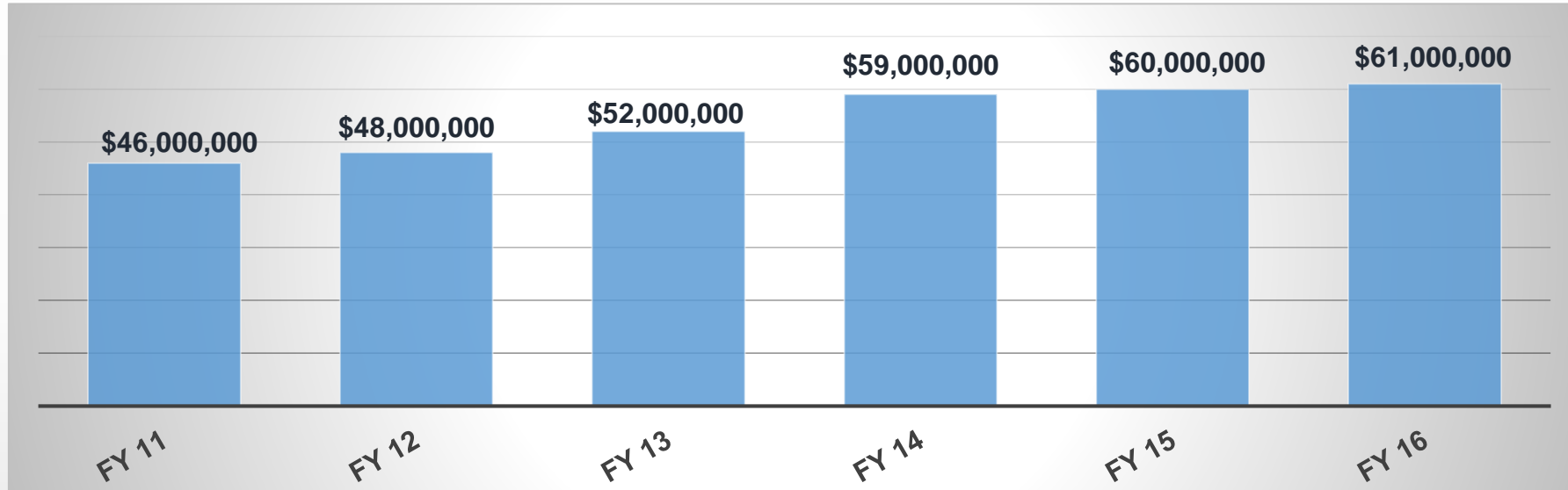
*Fiscal Year End Report**

March 15, 2016

*Preliminary Report



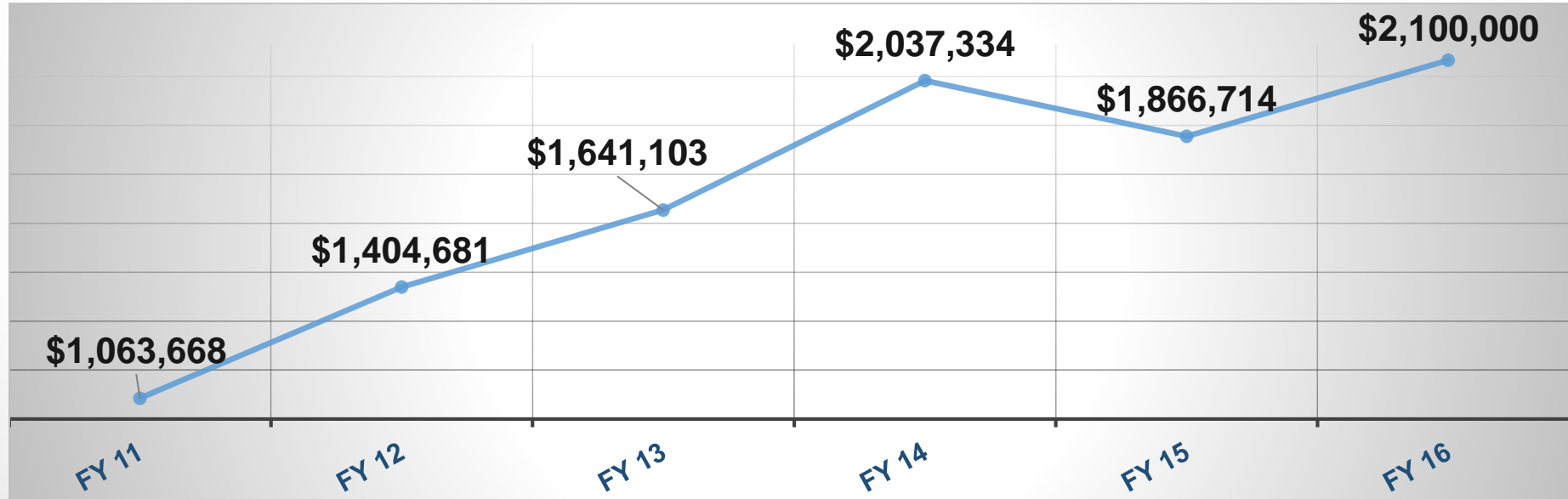
Financial Assets



- Increase of \$15M over six years
- Represents primarily permanently and temporarily restricted funding
- Non-cash asset: Foundation Art Collection valued as an estimated \$25M



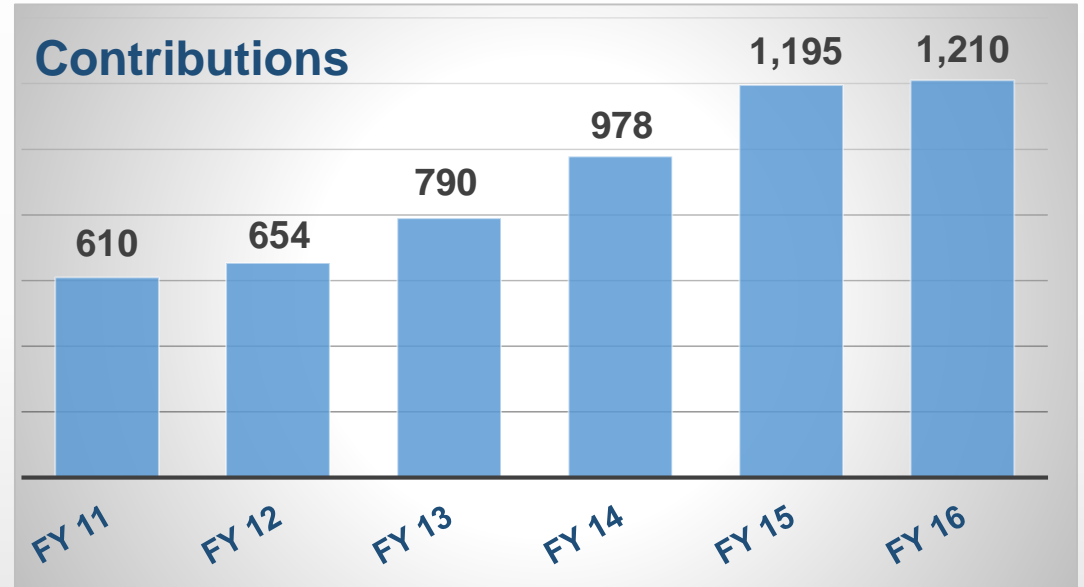
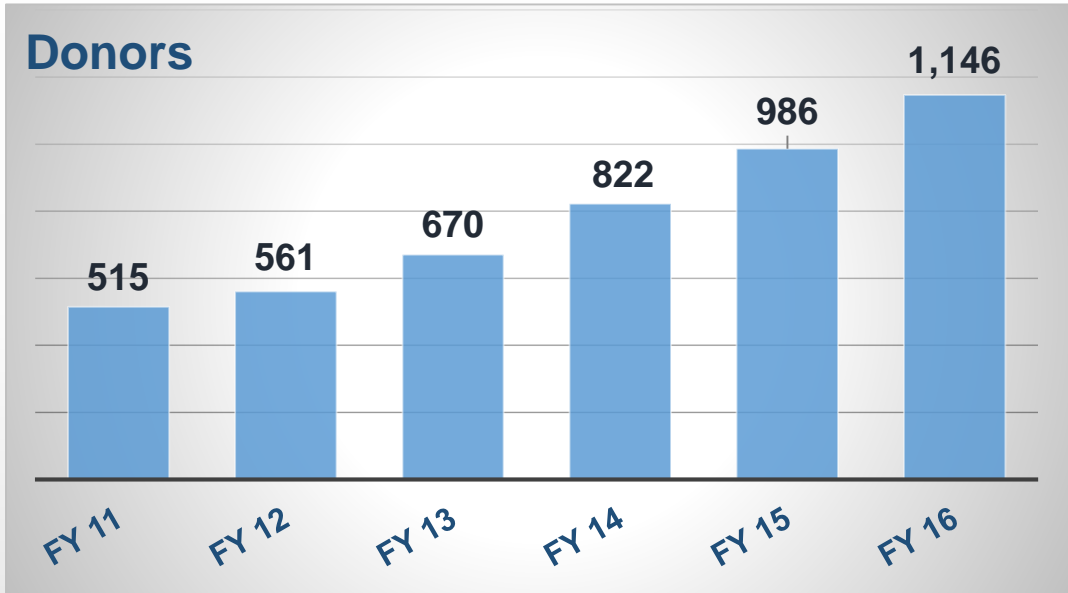
Annual Revenue



- More than 97% increase in revenues over six years
- Over \$10M generated FY11 – FY16

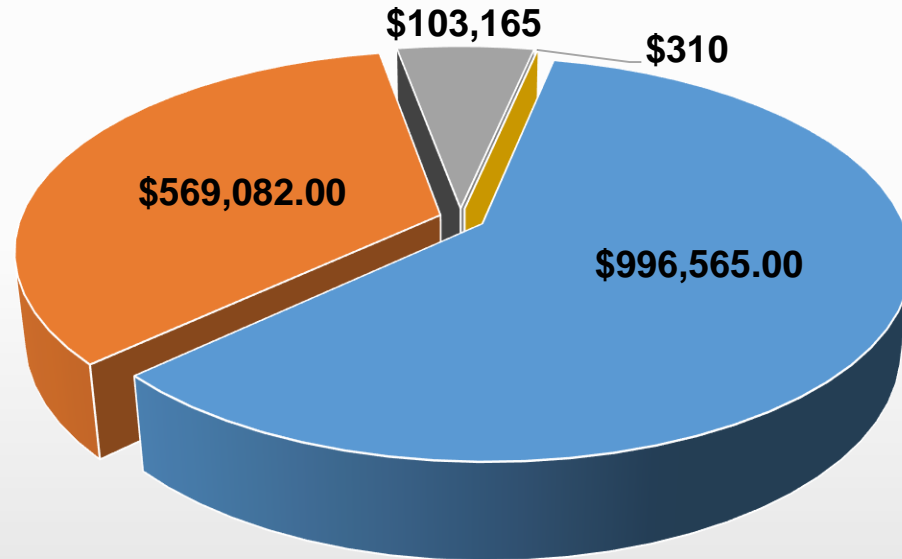


Donors and Contributions



FY16 Contributions Objectives

- Scholarships
- Programs
- Forums/Events
- Unrestricted



- Scholarships comprise largest segment of giving
- Contributions follow donor intent
- Limited unrestricted dollars



Contribution Size

Contributions: Gift Size						
	FY 2011	FY 2012	FY 2013	FY 2014	FY 2015	FY 2016
\$50K and Over	3	3	5	3	2	4
\$25K - \$49,999	8	5	10	12	12	14
\$10K - \$24,999	12	12	16	20	22	29
\$5K - \$9,999	9	16	21	27	30	30
\$1K - \$4,999	46	51	64	125	137	103
Total Gifts > \$1K	78	87	116	187	203	180



Scholarship Initiative

Scholarships Awarded (Academic Year)								
Scholarship Type	Completed Apps	New Apps	# Recipients	% Male	% Female	# Awarded	Avg. Award	TOTAL AWARDS
Traditional Scholarships 2014-2015	2,938	967	1,537	28.41%	68.77%	1,996*	\$709	\$1,411,220
Traditional Scholarships 2013-2014 <i>(for comparison)</i>	1,725		1,325	27.55%	70.04%	1,670*	\$688	\$1,070,116
Achievement Awards 2014-2015			100	40%	60%	106*	\$413	\$43,743
Presidential Scholarships 2014-15	148	148	65	30.77%	69.23%	65	\$6,655/avg. (60 hrs.)	\$432,600
First Generation (FA awards) 2015-16						916*	\$200	\$183,028
TOTAL AWARDS								\$2,070,591

*Not unduplicated



STRATEGIC PRIORITIES



Gift Acquisition

- Development Committee
- Increase gift size
- Expand business partnerships
- Access to high net worth individuals
- Develop *Fundable Projects* portfolio
- Naming Opportunities



Annual Speaker Series

- Launch Inaugural event with Apple Co-founder Steve Wozniak
- Appeal to broad audience
- Generate support for First Generation Scholarships



Alumni Association

- Membership / Renewal appeals
- New software/membership card
- 2016 Outstanding Alumnus: Congressman Gus Bilirakis
- Annual Scholarship Awards
- Alumni Connections newsletter



CORPORATE PARTNERS \$1,000+

Agile Thought, LLC

The Bank of Tampa

Baynard McLeod & Lang PA

Bright House Networks, LLC

Bristol-Myers Squibb Company

Cisco Solutions Group/Tech Data

Duke Energy, Inc.

Fifth Third Bank

General Dynamics

Great Bay Distributors, Inc.

Gregory, Sharer & Stuart

Jagged Peak, Inc.

LEMA Construction Co.

Liberty Mutual Group

Lockheed Martin University

McGraw-Hill Companies

Merrill Lynch Wealth Management

Nestle Purina PetCare Co.

Raymond James Financial, Inc.

RBC Wealth Management

Realty Consulting, Inc.

RedVector, Inc.

Sabal Trust Company

Tampa Bay Rays, Inc.

Transamerica

Tribridge Holding, LLC

Valley National Bank

Walmart, Inc.

Wells Fargo, Inc.



FOUNDATION BOARD OF DIRECTORS

OFFICERS

Bill McCloud, Chairman

Ret. Senior Vice President
Veolia Transportation

Beth A. Horner, Vice Chairman

Senior Vice President – Trust Director
The Bank of Tampa

Theresa K. Furnas, Treasurer

AVP Financial and Business Services
St. Petersburg College

Frances Neu, Secretary

VP Institutional Advancement / Foundation Executive
Director, St. Petersburg College

Angie Beltz

Vice President, Cisco Solutions Group at
Tech Data Corporation

Joseph G. Blanton, Finance and Investment Committee Chair

Raymond James and Associates, Inc.

R. Michael Carroll

Ret. CFO, Club Corp of America

Kenneth P. Cherven, Development Committee Chair

The Bank of Tampa
Ret. President – Pinellas Division

Stephen O. Cole

Attorney, MacFarlane Ferguson & McMullen

Paul Demirdjian

President/CEO
Jagged Peak, Inc.

John W. Doshier

Vice President/General Manager
Bright House Networks - Pinellas Region

Robert L. Hilton

First Vice President, Mustard Seed Advisors
Raymond James Financial, Inc.

Dr. William D. Law, Jr.,

President, St. Petersburg College

Steven R. Shepard, Governance Committee Chair

Ret. Sr. VP & Gen. Counsel
Western Reserve Life Assurance Co. of Ohio

Shan Shikarpuri

President, Shan Shikarpuri & Associates, P.A.

Richard B. Winning

Vice President, Derby Lane

David Zillig

Ret. Co-Owner, Jani-King International



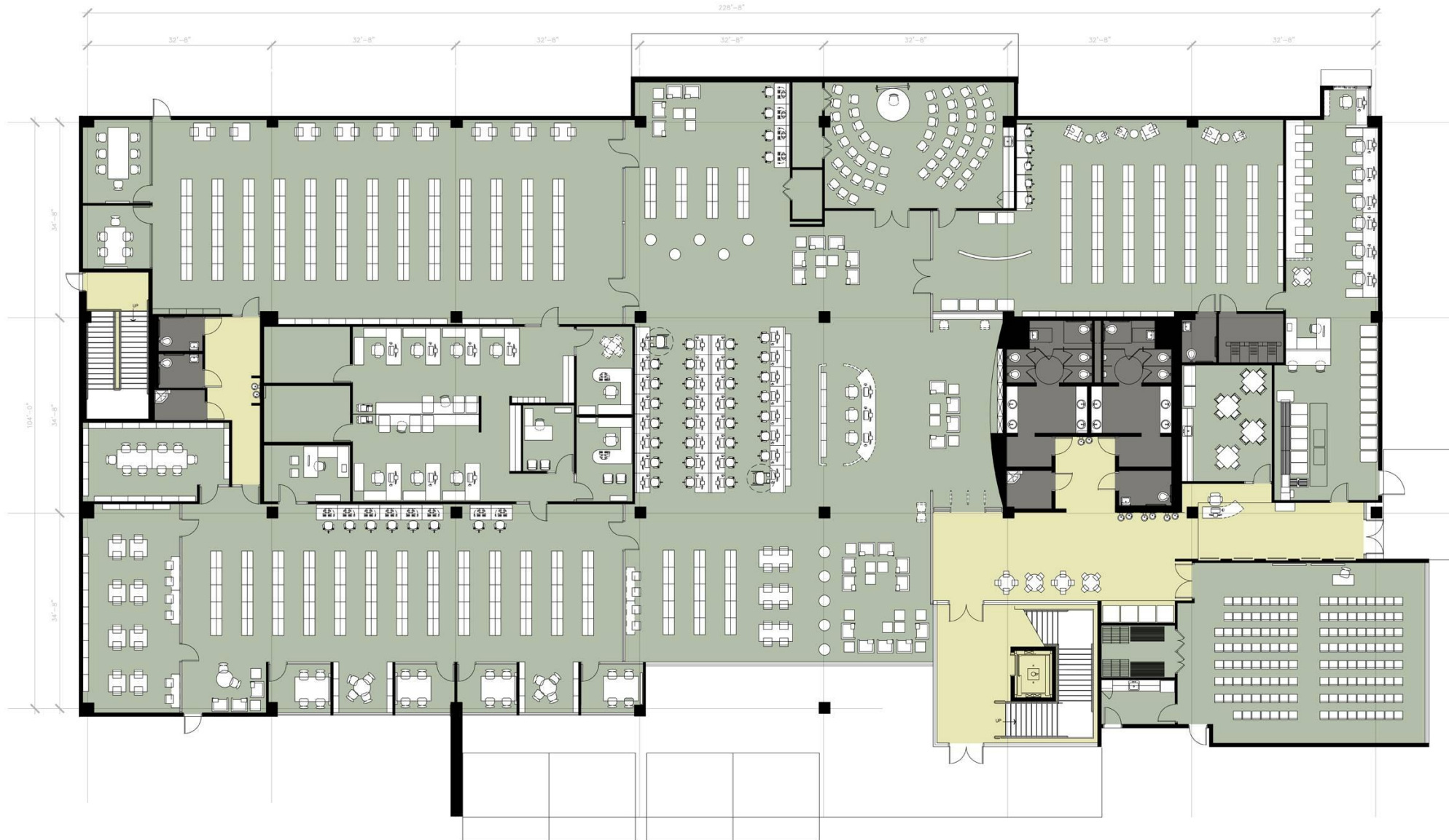
QUESTIONS?



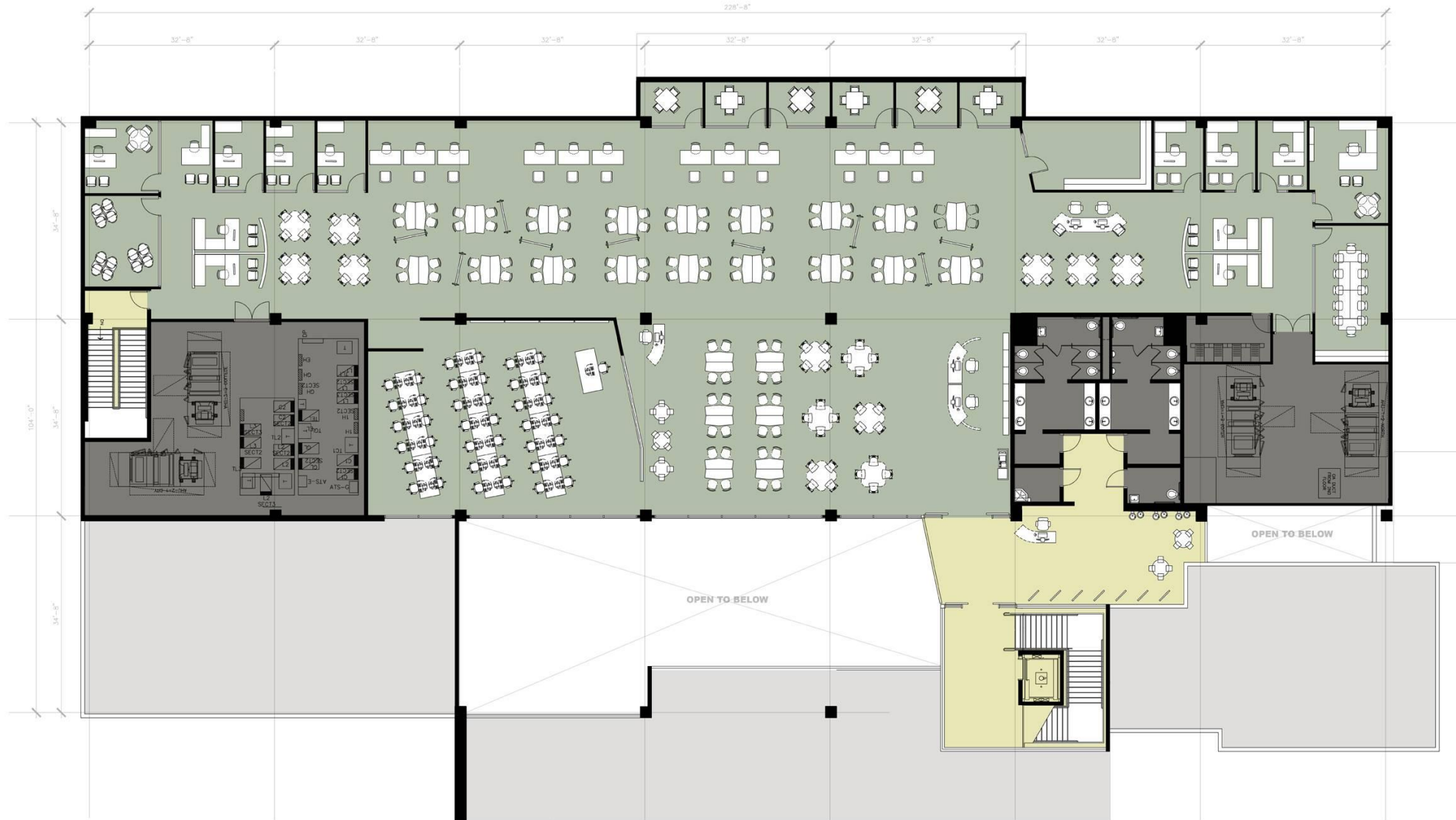




First Floor



Second Floor









- **75% Construction Documents under review**
 - **Final Construction Documents issued May 6**
 - **Guaranteed Maximum Price delivered May 27**
 - **Approval by Clearwater City Council on June 16**
 - **Guaranteed Maximum Price Approval by St. Petersburg College on June 21**
 - **Groundbreaking July 2016**
-
- **Total Budget - \$15.0 Million**
 - **College Share - \$ 9.1 Million**
 - **City Share - \$ 5.9 Million**

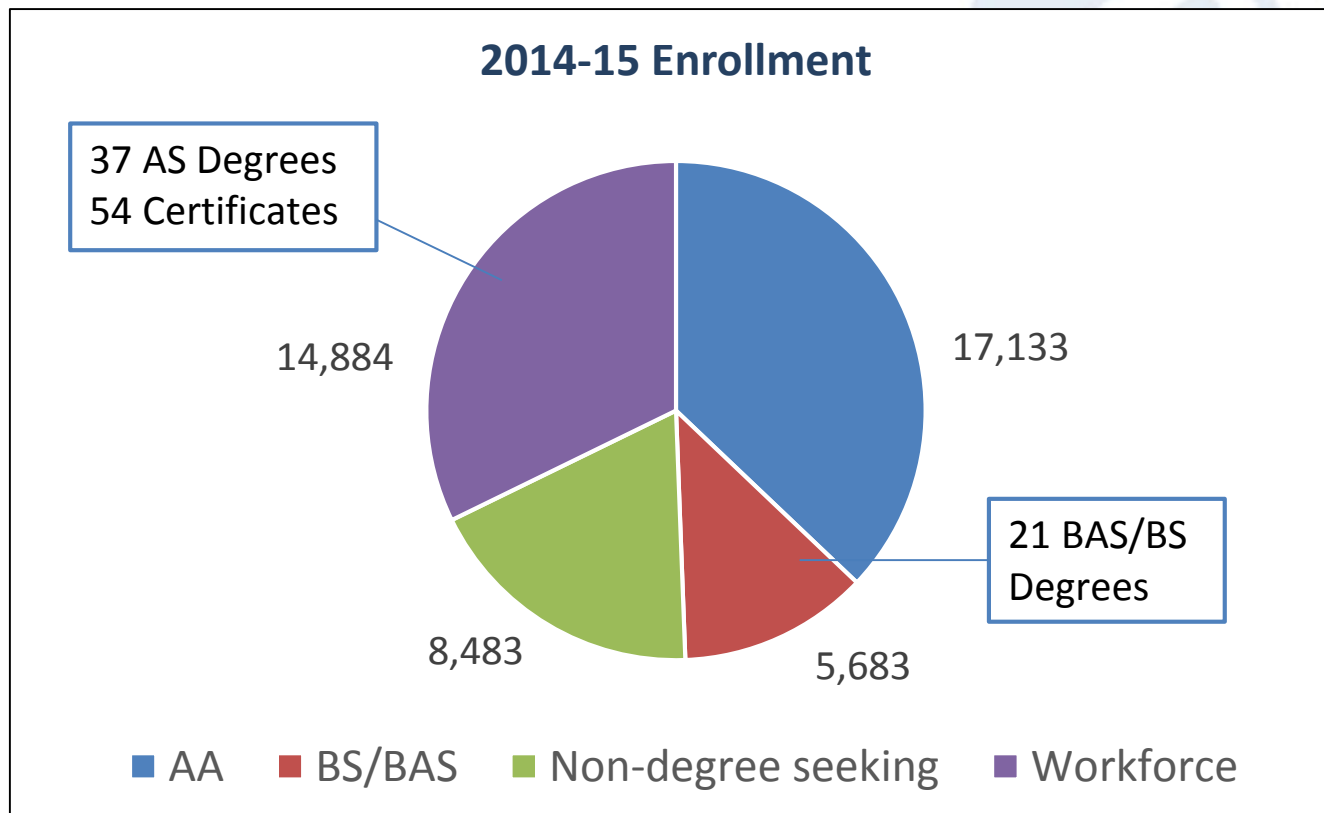
Career Preparation and Placement

Jason Krupp, Director of Workforce Services

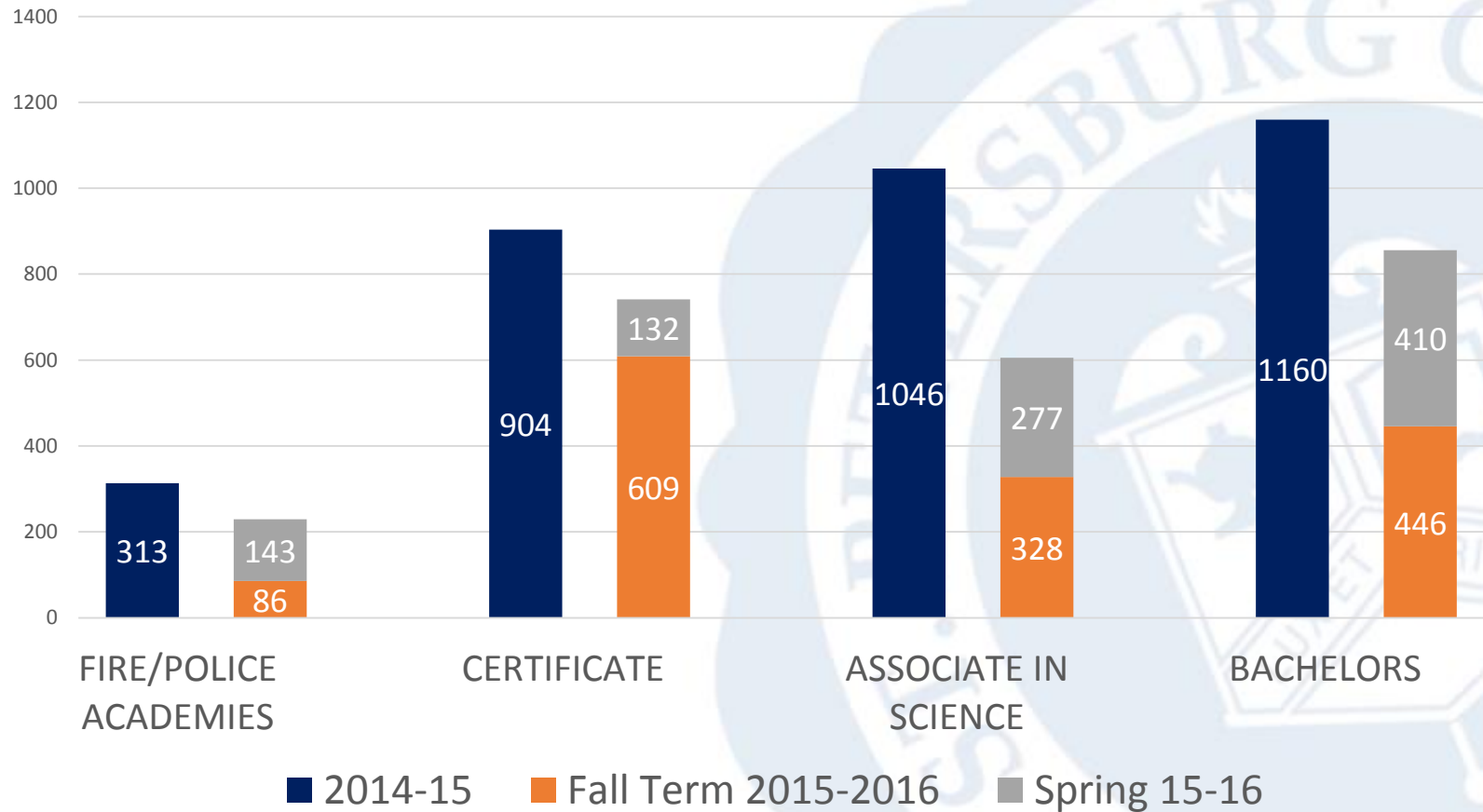
Marvin Bright, Provost, Tarpon Springs Campus

SPC Board of Trustees – March 15, 2016

Enrollment by Degree Type

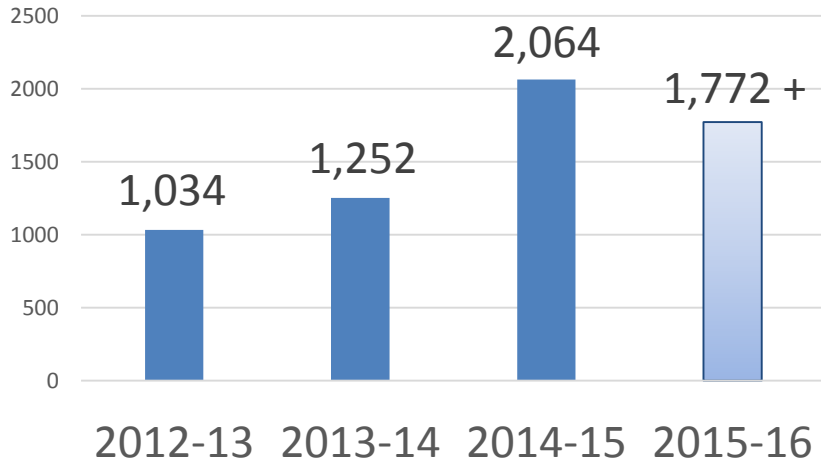


Workforce Graduates

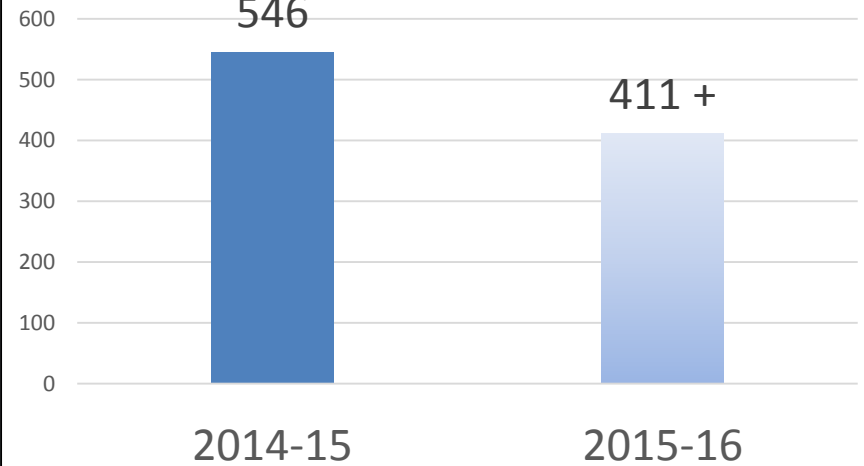


Career-Readiness

Growth of SPC Internships



Fundable Industry Certifications



INFORMATION TECHNOLOGY

“ SPC GIVES YOU HANDS-ON, REAL-WORLD EXPERIENCES. ”

[LEARN MORE](#)

-Amy Mitchell, Social Sciences, SPC grad

The advertisement features a woman in profile looking at a computer screen. The background is a dark blue with a grid pattern. The text is white and bold. A quote is enclosed in large quotation marks. A 'LEARN MORE' button is at the bottom left, and a testimonial is at the bottom right.

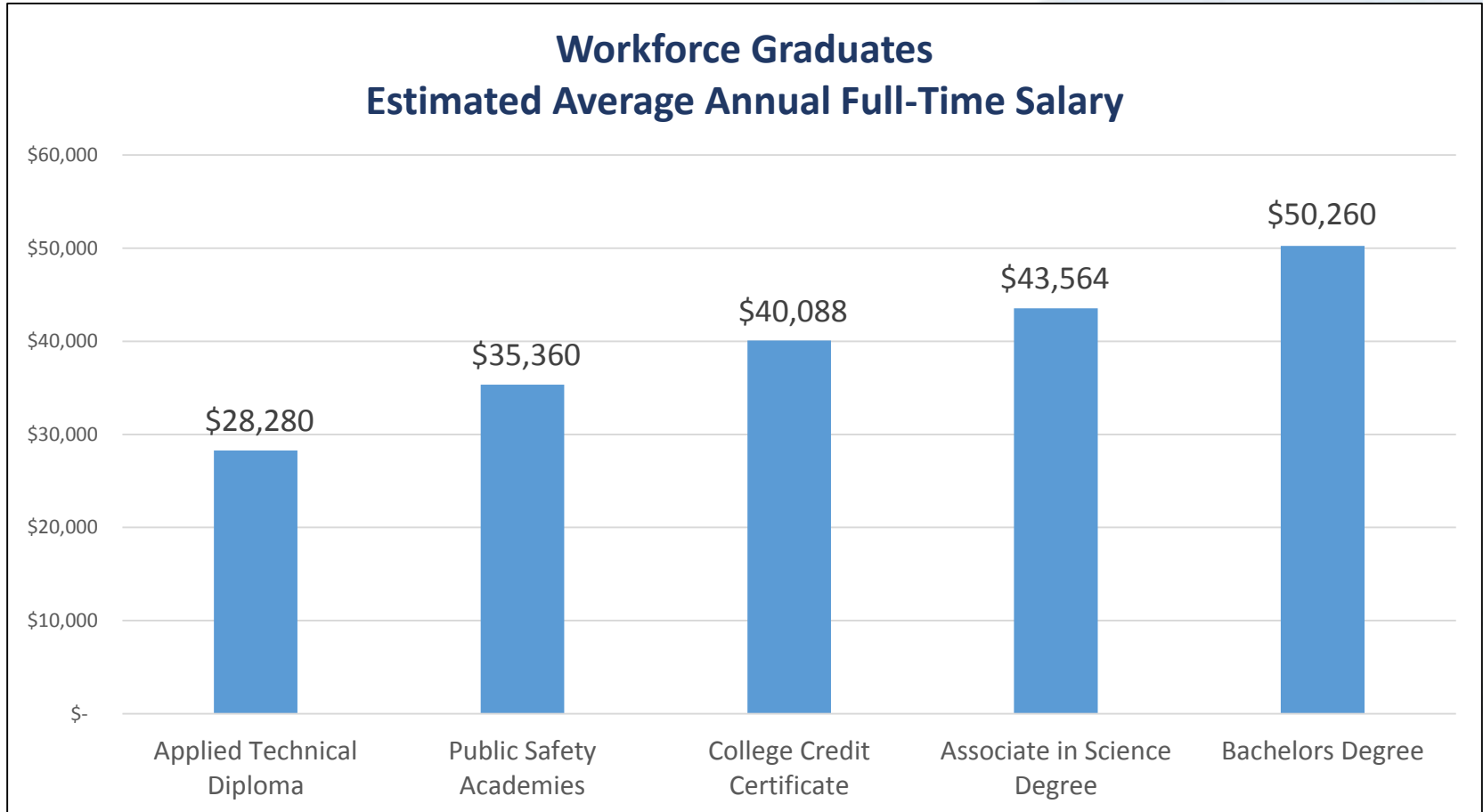
Placement Report

Workforce and Baccalaureate Placement - 2012-13 Graduates

Program	Pool	Military	Continuing Education	Employed In Field	Total Placed	%
Associate in Science	805	2	168	579	749	93
Certificate and Vocational	1498	2	361	970	1333	89
Bachelor	279	1	39	200	240	86

[SPC Fact Book, Table 38](#)

Salary of Graduates



[Florida Department of Education, Smart College Choices](#)

Student Support Team Training

Career Development Facilitator (CDF) Certification, National Career Development Association

http://ncda.org/aws/NCDA/pt/sp/facilitator_overview

Student Services Personnel	CDF Training Hours
114	13,680

CDF training to be completed by March 25, 2016

Career Service Updates

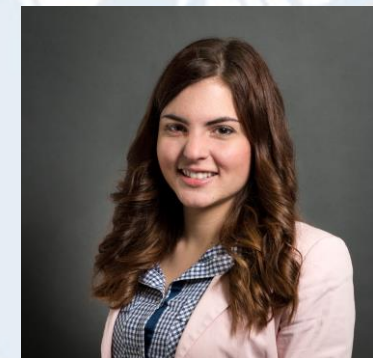
Job Preparation Coaching (Optimal Resume) & LinkedIn Photoshoots

	Fall 2015-16	Spring 2015-16
Resume	1,438	448+
Cover Letter	219	81+
Interviews	86	119+
Photoshoots	78	46+



Career Search (Burning Glass)

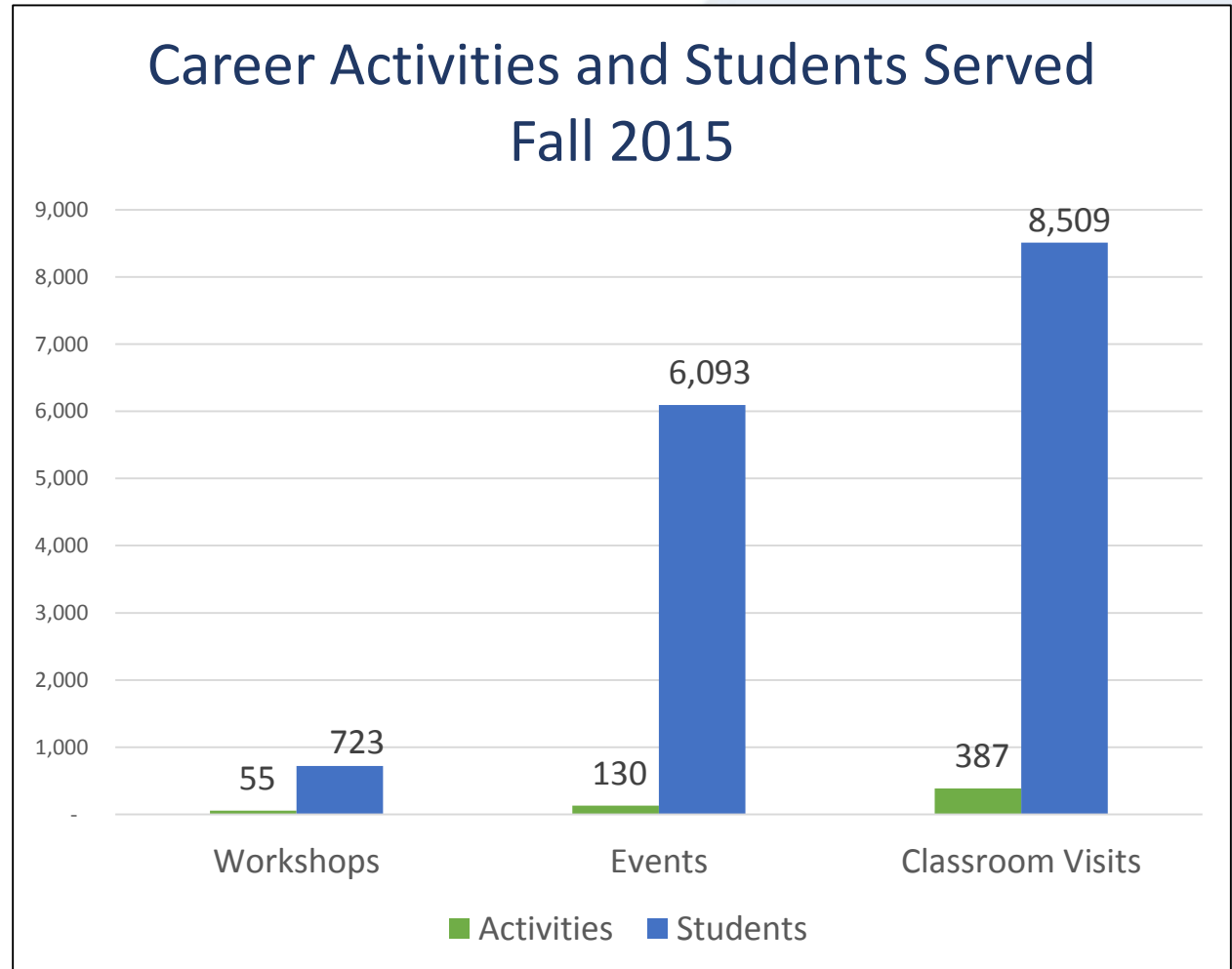
	Fall 2015-16	Spring 2015-16
Job Searches	4,093	1,956+
Jobs viewed	3,044	1,597+



Scaling Up Career Services

Total Activities
572

Total Students
15,325



Embedding Career Services

Faculty & Career Services Partnership

Term	Career Services Integrated in Courses	Career Services Webinars Viewed	Total
Fall 15-16	165	906	1,071
Spring 15-16	443	1,147	1,590

On Demand Webinars



Enhancements to Facilities



Questions?

